

MX-003 STORAGE SOLUTION

For use in Marvel United: X-Men Small Expansion Boxes (Blue Team, First Class, etc.)

This kit provides storage for cards, minis, and boards



Construction Tips

- 1) Each piece should be removed from the frames with gentle pressure back and forth. You should not need a knife to cut pieces free.
- 2) Our organizers are designed to be glued together. We use Sobo craft glue, but any glue that is tacky and dries clear will work fine. Tacky glue assists with building as it holds better during construction. You can use painter's/masking tape for some joins, but glue is always best.
- 3) Ensure you cleanup excess glue as you build. This is especially important in card lanes where dividers will be used or in spaces where a tray will be stored.
- 4) Check the build diagrams included in the package for reference, including all parts, as well as build tips specific to this insert.
- 5) **Always dry fit pieces first** to ensure a good fit and to better understand how the kit goes together.
- 6) Allow your finished insert to dry overnight.
- 7) You can optionally sand and even stain your insert.
- 8) Don't hesitate to reach out to us if you have questions!

Visit go7gaming.com for a large selection of storage solutions. Follow us on Twitter: [@go7gaming](https://twitter.com/go7gaming) and Facebook: [go7gaming](https://www.facebook.com/go7gaming)

Go7 Gaming, Inc.
6001 W. Parmer Ln
Suite 370-119
Austin, TX 78727

MADE IN THE USA

NOT A CHILDREN'S TOY
AGE 14+



Build Instructions

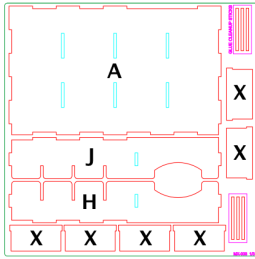


PLATE #1

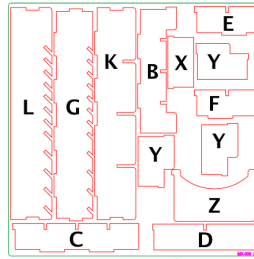
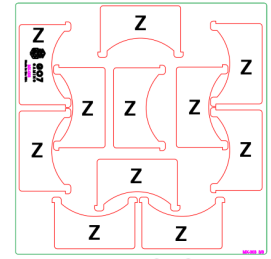


PLATE #2



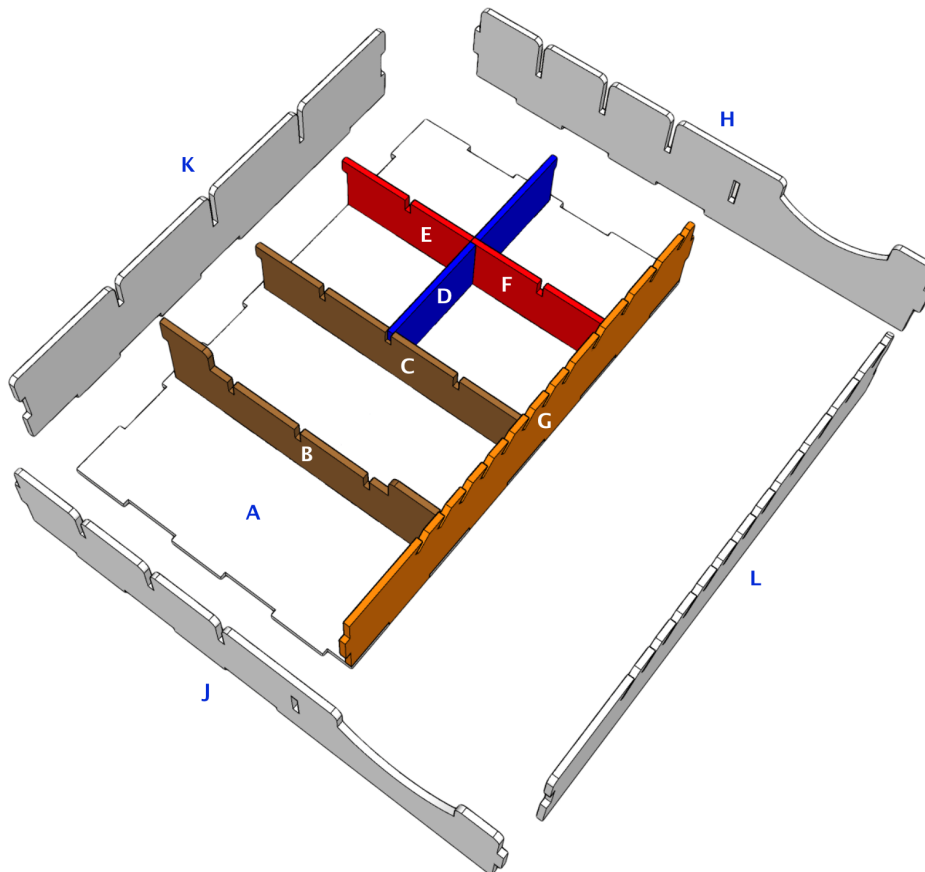
PLATES #3

Please reference the diagrams to understand how each component fits together. Also, dry fit the pieces to understand how it goes together and ensure everything is oriented properly before applying glue. Finally, cleanup excess glue to ensure a proper fit and finish, especially in card, rail, and tray storage areas.

Building the Main Organizer

The Main Organizer is designed to hold the cards, minis, and boards from the small expansion boxes. Each unit can also store additional cards, minis, and boards from the KS Extras box (or other small expansions).

- 1) Orient base (A) as illustrated.
- 2) Next, apply glue to the side tabs and bottom of inner walls (B, C) and connect to base (A). **{brown}**
- 3) Next, apply glue to the side tabs and bottom of inner wall (D) and connect to base (A). **{blue}**
- 4) Next, apply glue to the side tabs and bottom of inner wall (G) and connect to base (A). **{orange}**
- 5) Next, apply glue to the side tabs and bottom of outer wall (H) and connect. Note this wall has deeper cutouts than wall (J).
- 6) Next, apply glue to the side tabs and bottom of outer wall (J) and connect. Note this wall has shallower cutouts than wall (H).
- 7) Next, apply glue to the bottom of outer wall (K) and connect.
- 8) Finally, apply glue to the bottom of outer divider wall (L) and connect.
- 9) Once your card tray has had a few minutes to dry, place a few dividers (Z) into the tray and allow it to dry overnight.
- 10) After you have decided how you want to store your minis, you can glue the large splitters (Y) between walls (J, B) as needed, inner walls (E, F) **{red}** as needed [most layouts for expansions will use both (E, F)], and small splitters (X) everywhere else you need them. You can also choose not to glue the splitters into the organizer.



- COMPLETE -