

MX-002 STORAGE SOLUTION

Organizer Compatible with Marvel United X-Men: Days of Future Past

This kit provides storage for cards, minis, tokens, boards, and extras



Construction Tips

- 1) Each piece should be removed from the frames with gentle pressure back and forth. You should not need a knife to cut pieces free.
- 2) Our organizers are designed to be glued together. We use Sobo craft glue, but any glue that is tacky and dries clear will work fine. Tacky glue assists with building as it holds better during construction. You can use painter's/masking tape for some joins, but glue is always best.
- 3) Ensure you cleanup excess glue as you build. This is especially important in card lanes where dividers will be used or in spaces where a tray will be stored.
- 4) Check the build diagrams included in the package for reference, including all parts, as well as build tips specific to this insert.
- 5) **Always dry fit pieces first** to ensure a good fit and to better understand how the kit goes together.
- 6) Allow your finished insert to dry overnight.
- 7) You can optionally sand and even stain your insert.
- 8) Don't hesitate to reach out to us if you have questions!

Visit go7gaming.com for a large selection of storage solutions. Follow us on Twitter: [@go7gaming](https://twitter.com/go7gaming) and Facebook: [go7gaming](https://www.facebook.com/go7gaming)

Go7 Gaming, Inc.
6001 W. Parmer Ln
Suite 370-119
Austin, TX 78727

MADE IN THE USA

NOT A CHILDREN'S TOY
AGE 14+



Build Instructions

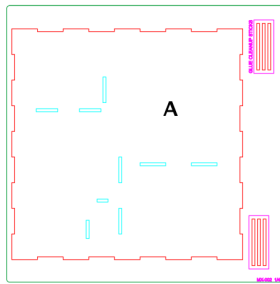


PLATE #1

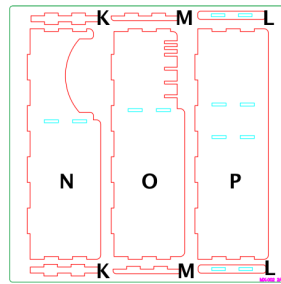
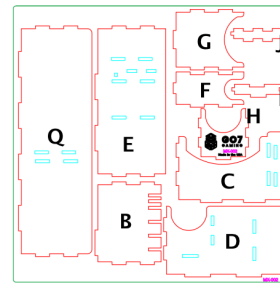
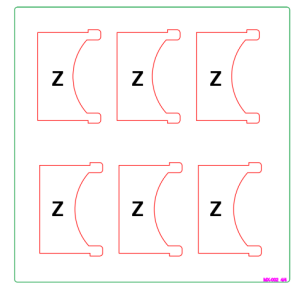


PLATE #2



PLATES #3



PLATES #4

Please reference the diagrams to understand how each component fits together. Also, dry fit the pieces to understand how it goes together and ensure everything is oriented properly before applying glue. Finally, cleanup excess glue to ensure a proper fit and finish, especially in card, rail, and tray storage areas.

Building the Main Organizer

The Main Organizer is designed to hold all of the contents from Days of Future Past (normal or upgraded). This solution also provides three additional mini storage slots in the rail areas, along with room to store the corresponding cards in the card tray area. We also provide a dedicated storage area for the three sentinel tokens. There is room on top of the tray to store large boards and the game manual. Note that not all minis will fit into the railed areas. These rails only provide 5mm of clearance for mini bases, so choose minis from the KS extras box with < 5mm tall bases.

- 1) Orient base (A) as illustrated.
- 2) Next, glue the two support/rails (KL) together.
- 3) Next, glue the two support/rails to inner wall (D) and inner wall (E).
- 4) Next, glue the two rails (M) to outer wall (Q) and inner wall (C).
- 5) Next, apply glue to the right tabs of inner wall (B) and connect together with inner wall (C) together.
- 6) Next, apply glue to floor (R), side wall (J), and front wall (H, logo faces outward) and connect to inner wall (D).
- 7) Next, apply glue to the side and bottom tabs of inner walls (DE) and connect to base (A).
- 8) Next, apply glue to the side and bottom tabs of small walls (FG) and connect. You will need to lift inner walls (DE) to properly seat small walls (FG).
- 9) Next, apply glue to side and bottom tabs of inner walls (BC) and connect to the base (A). You will need to lift inner walls (DE) to properly seat.
- 10) Next, apply glue to the side tabs and bottom of outer wall (Q) and connect.
- 11) Next, apply glue to the bottom of outer wall (P) and connect.
- 12) Next, apply glue to the side tabs and bottom of outer wall (O) and connect.
- 13) Finally, apply glue to the bottom of outer wall (N) and connect.
- 14) Once your card tray has had a few minutes to dry, place a few dividers (Z) into the tray and allow it to dry overnight.

