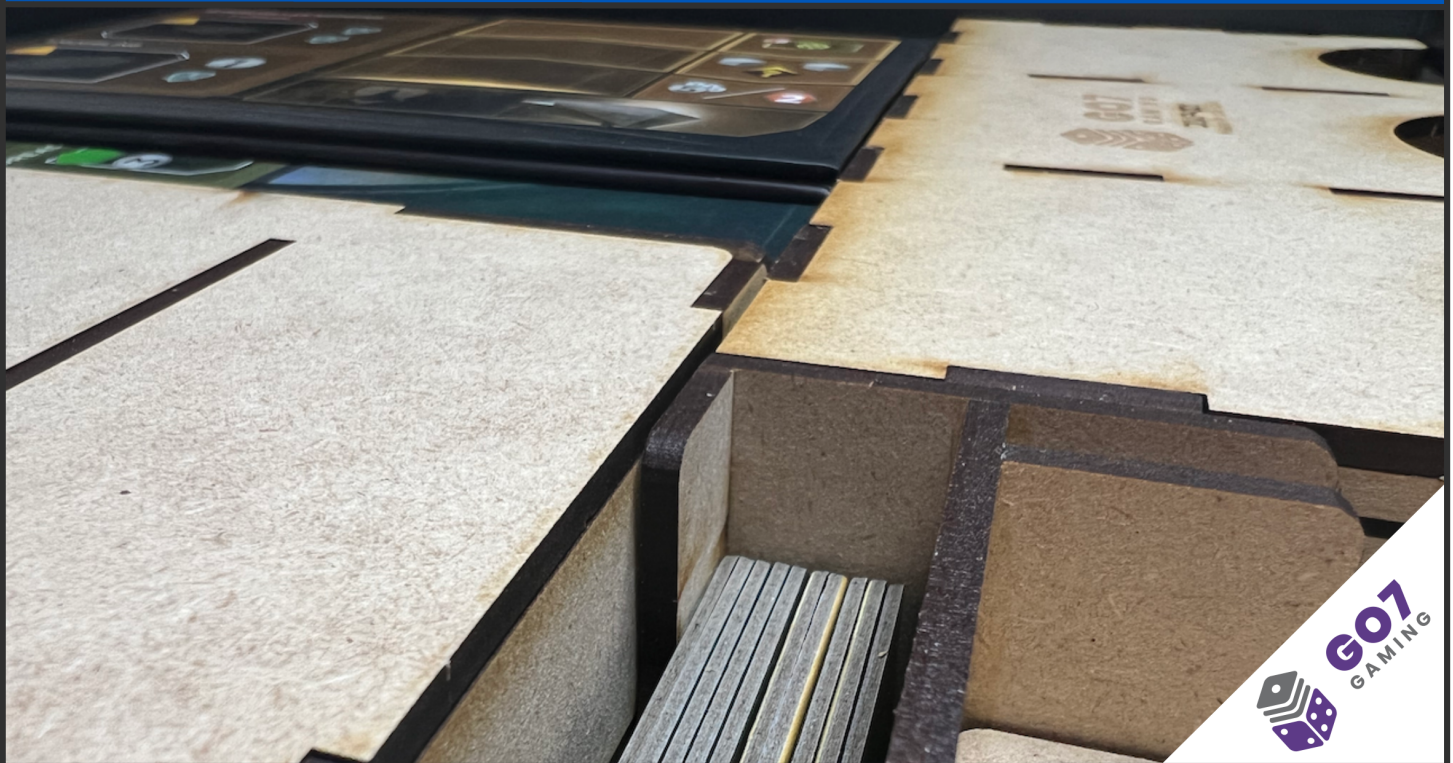


# DIMP-001 STORAGE SOLUTION

for Dune: Imperium

Organizer kit providing storage for cards & tokens; includes 4 player boards, and more. Supports Rise of Ix expansion.



## Construction Tips

- 1) Each piece should be removed from the frames with gentle pressure back and forth. You should not need a knife to cut pieces free.
- 2) Our inserts are designed to be glued together. We use Sobo craft glue, but any glue that is tacky and dries clear will work fine. Tacky glue assists with building as it holds better during construction. You can use painter's/masking tape for some joins, but glue is always best.
- 3) Ensure you cleanup excess glue as you build. This is especially important in card lanes where dividers will be used or in spaces where a tray will be stored.
- 4) Check the build diagrams included in the package for reference, including all parts, as well as build tips specific to this insert.
- 5) **Always dry fit pieces first** to ensure a good fit and to better understand how the kit goes together.
- 6) Allow your finished insert to dry overnight.
- 7) You can optionally sand and even stain your insert.
- 8) Don't hesitate to reach out to us if you have questions!

Visit [go7gaming.com](https://go7gaming.com) for a large selection of storage solutions. Follow us on Twitter: [@go7gaming](https://twitter.com/go7gaming) and Facebook: [go7gaming](https://facebook.com/go7gaming)

Go7 Gaming, Inc.  
6001 W. Parmer Ln  
Suite 370-119  
Austin, TX 78727

MADE IN THE USA

NOT A CHILDREN'S TOY  
**AGE 14+**



# Build Instructions

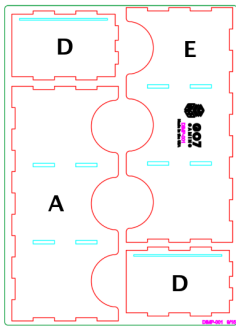


PLATE #9

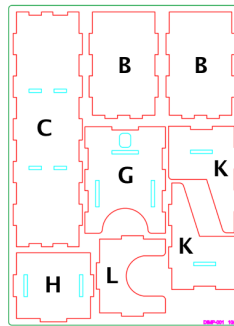


PLATE #10

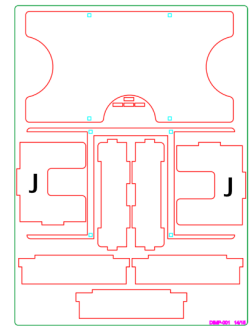


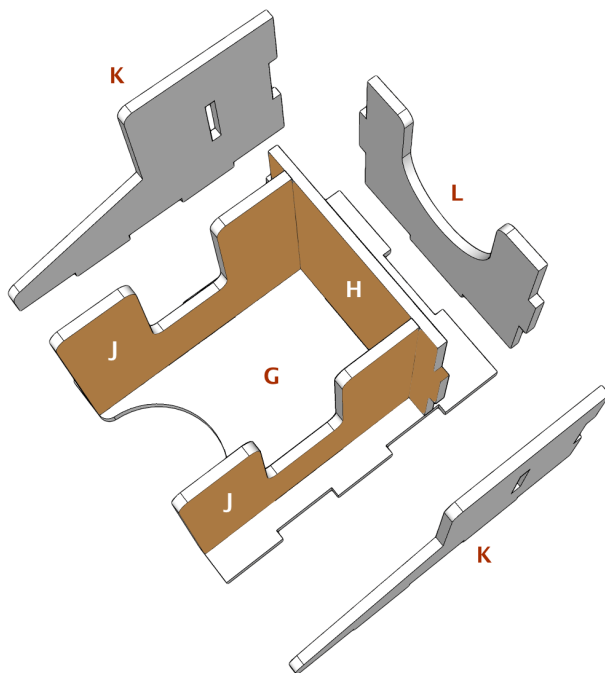
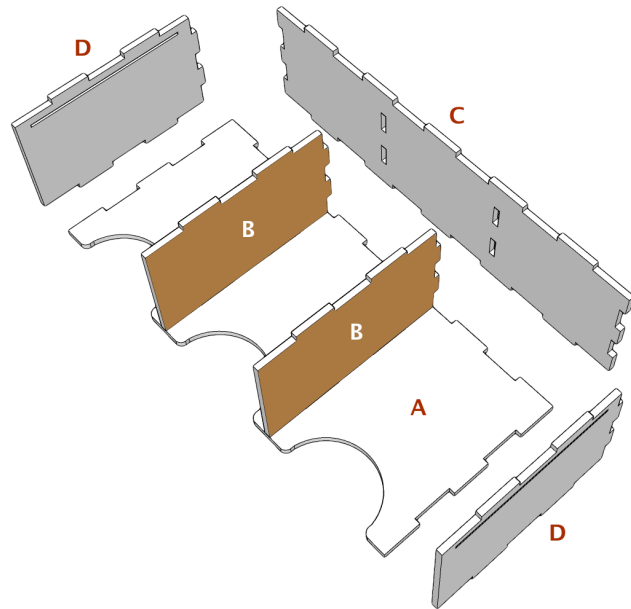
PLATE #14

Please reference the diagrams to understand how each component fits together. Also, dry fit the pieces to understand how it goes together and ensure everything is oriented properly before applying glue. Finally, cleanup excess glue to ensure a proper fit and finish, especially in card, rail, and tray storage areas.

## Building the Large Card Tray

The Large Card Tray provides storage for your large cards and includes several dividers.

- 1) Place base (A) in the orientation noted.
- 2) Next, place glue on the bottom, top, and side tabs of inner walls (B, B) and connect to base (A).
- 3) Next, place glue on the bottom of rear wall (C) and connect.
- 4) Next, place glue on the rear tabs of top (E) and connect. The top (E) is not pictured on the right. Logo should face upwards.
- 5) Finally, place glue on the top, bottom, and side tabs of end walls (D, D) and connect on both sides.



## Building the Small Card Tray

The Small Card Tray provides storage for your small cards and includes several dividers. This tray is also used to store the tech tiles from the Rise of Ix expansion.

- 1) Place base (G) in the orientation noted.
- 2) Next, place glue on the side tabs of inner walls (J, J) and connect to inner rear wall (H).
- 3) Next, place glue on the bottom tabs of the structure you built in step #2 and connect to base (G).
- 4) Next, place glue on the side tabs of inner rear wall (H), the bottom of side walls (K, K), and connect.
- 5) Finally, place glue on the bottom and side tabs of rear wall (L) and connect.

# Build Instructions

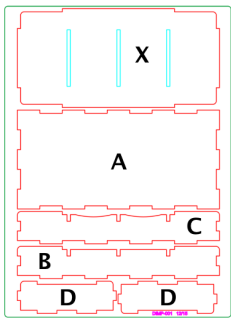


PLATE #12

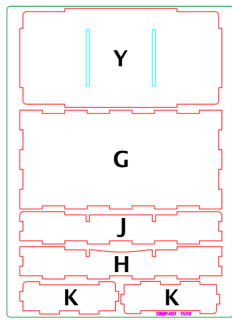


PLATE #11

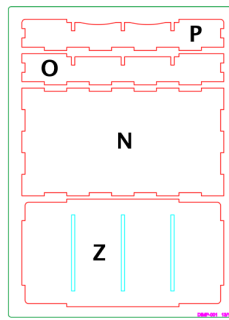


PLATE #13

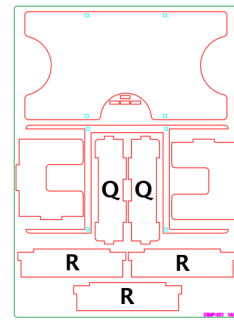


PLATE #14

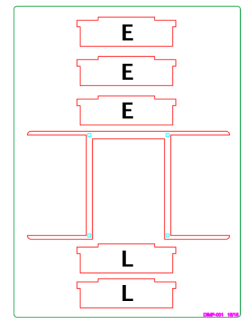


PLATE #15

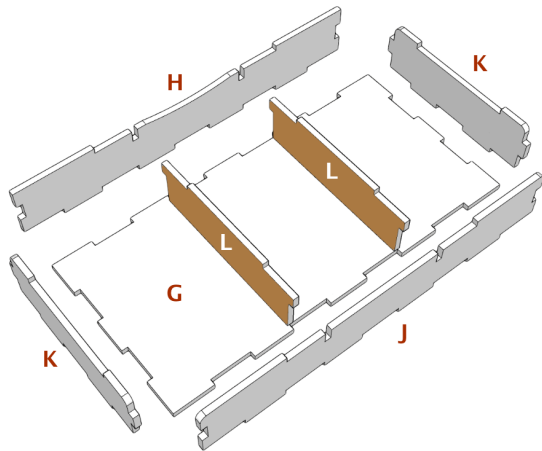
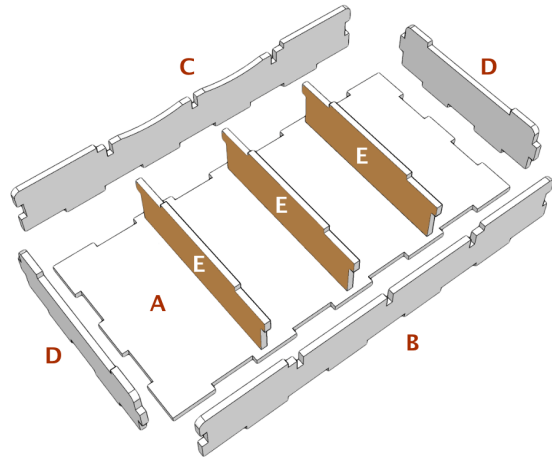
Please reference the diagrams to understand how each component fits together. Also, dry fit the pieces to understand how it goes together and ensure everything is oriented properly before applying glue. Finally, cleanup excess glue to ensure a proper fit and finish, especially in card, rail, and tray storage areas.

## Building the Setup Tray

The Setup Tray provides storage for the tokens used during game setup including the Mentat, alliance tokens, first player token, the Baron Harkonnen tokens, and the snooper tokens.

- 1) Place base (A) in the orientation noted.
- 2) Next, place glue on the bottom and side tabs of end wall (D) and connect to base (A).
- 3) Next, place glue on the bottom of outer wall (B) and connect. Repeat on the other side with outer wall (C).
- 4) Next, place glue on the bottom and side tabs of end wall (D) and connect to base.
- 5) Finally, place glue on the bottom of inner walls (E, E, E) and connect.

- 6) Once your tray has had 5 minutes to dry, place lid (X) on the tray and allow to dry overnight.



## Building the Token Play Tray

The Token Play Tray provides storage for the water, Solari, and Spice tokens and is intended to be used during play.

- 1) Place base (G) in the orientation noted.
- 2) Next, place glue on the bottom and side tabs of end wall (K) and connect to base (G).
- 3) Next, place glue on the bottom of outer wall (H) and connect. Repeat on the other side with outer wall (J).
- 4) Next, place glue on the bottom and side tabs of end wall (K) and connect to base.
- 5) Finally, place glue on the bottom of inner walls (L, L) and connect.

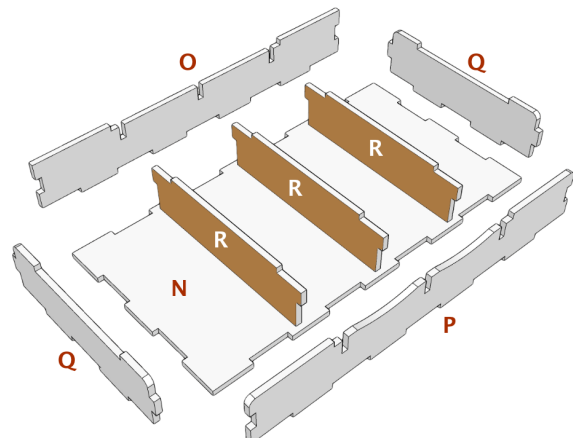
- 6) Once your tray has had 5 minutes to dry, place lid (Y) on the tray and allow to dry overnight.

## Building the Player Tray

The Player Tray provides storage for the player components.

- 1) Place base (N) in the orientation noted.
- 2) Next, place glue on the bottom and side tabs of end wall (Q) and connect to base (N).
- 3) Next, place glue on the bottom of outer wall (O) and connect. Repeat on the other side with outer wall (P).
- 4) Next, place glue on the bottom and side tabs of end wall (Q) and connect to base.
- 5) Finally, place glue on the bottom of inner walls (R, R, R) and connect.

- 6) Once your tray has had 5 minutes to dry, place lid (Z) on the tray and allow to dry overnight.



# Build Instructions

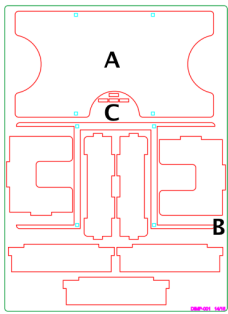


PLATE #14

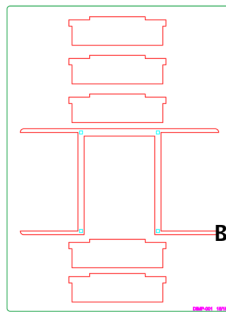
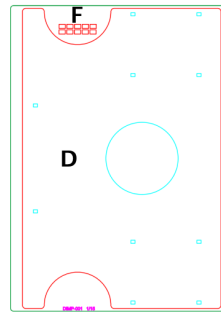
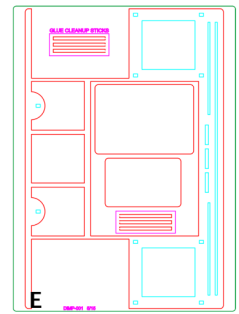


PLATE #15



PLATES #1 - 4



PLATES #5 - 8

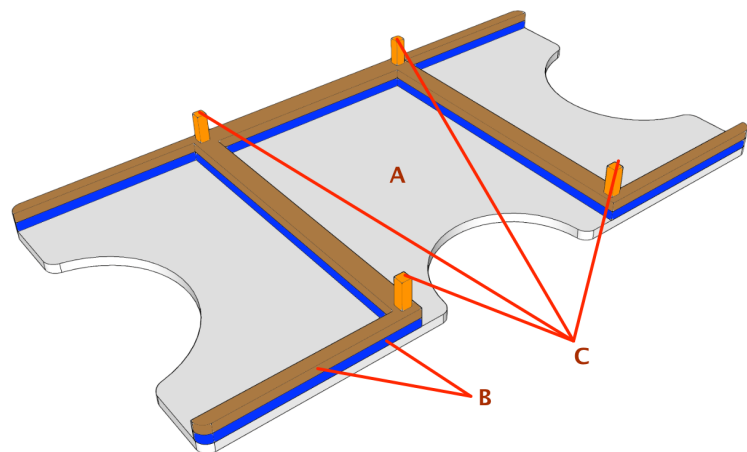
Please reference the diagrams to understand how each component fits together. Also, dry fit the pieces to understand how it goes together and ensure everything is oriented properly before applying glue. Finally, cleanup excess glue to ensure a proper fit and finish, especially in card, rail, and tray storage areas.

**Be careful with the thin top frames for these multi-layer boards.** The multi-layer boards you will be building on this page use small pins to stabilize and align the multiple layer boards. You should place a very, very light layer of glue on the backside of each additional layer to ensure a perfect finish. You should also place a small dab of glue in the pin holes to ensure the pins are anchored for life. Finally, clean up all excess glue!

## Building the Reserve Card Tray

The Reserve Card Tray provides a convenient place to keep the reserve cards during play.

- 1) Place base (A) in the orientation noted.
- 2) Next, place a very, very thin layer of glue on the back of the second and third layers (B, B) and lay them carefully centered on the base (A), aligning with the four pin (C) holes.
- 3) Next, place a small dab of glue in each of the four pin (C) holes and then using a rubber mallet or similar tool, tap the pins in until they are flat with the surface of the board. The orange pins should not rise above the surface of the boards. They are raised in the image to the right to illustrate placement.
- 4) Finally, clean up all excess glue.



We stack our drying trays and put a dictionary on top overnight to ensure the glue bonds tightly to all parts of the trays.

## Building the Player Boards (4x)

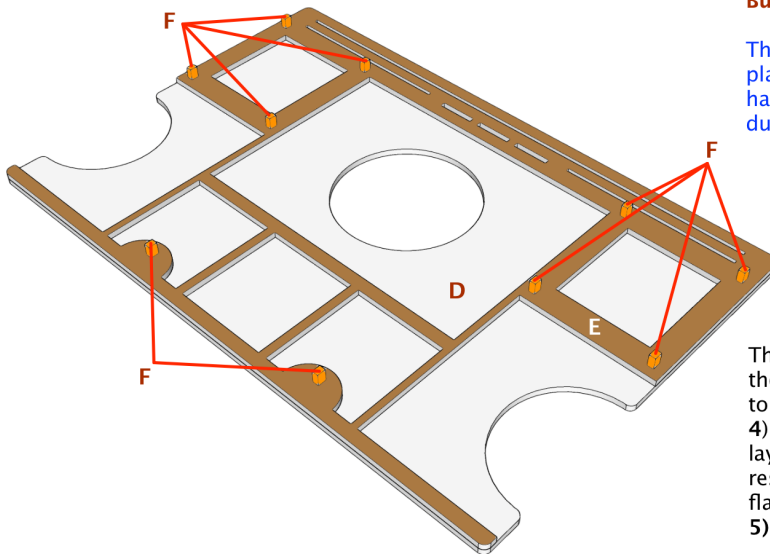
The four Player Boards provide each player with a place to store their leader card, decks, discards, hand cards, player components, and resources during play.

- 1) Place base (D) in the orientation noted.
- 2) Next, place a very, very thin layer of glue on the back of the smaller top layer (E) and lay it carefully centered on the base (D).
- 3) Next, place a small dab of glue in each of the ten pin (F) holes and then, using a rubber mallet or similar tool, tap the pins in until they are flat with the surface of the board.

The orange pins should not rise above the surface of the boards. They are raised in the image to the right to illustrate placement.

- 4) Next, apply pressure on the surface of the top layers. Placing a book on top of the board while it rests on a flat, solid surface is the quickest way to flatten the top layer.
- 5) Finally, clean up all excess glue.

- 6) Repeat three more times.





# Storage Instructions

## Step One:

Place the four Player Boards (A), Large Card Tray (B), and Small Card Tray (C) into the box. **Note:** Leader cards should be stacked into the three Player Boards on the bottom for storage.



## Step Two:

Next, place the Reserve Card Tray (D), Token Play Tray (E), and Setup Tray (F) into the box.



## Step Three:

Finally, place the Player Tray (G) and the CHOAM and IX boards (H) into the box. Then place the instruction manuals on top of the trays. Then place the large game board on top of the manuals and close the box.

