

SR-002 STORAGE SOLUTION

Storage Kit for Star Realms™ Universal Storage Box (2021 edition that measures 9" x 15")
Complete insert kit providing storage for cards and one playmat



Construction Tips

- 1) Each piece should be removed from the frames with gentle pressure back and forth. You should not need a knife to cut pieces free.
- 2) Our inserts are designed to be glued together. We use Sobo craft glue, but any glue that is tacky and dries clear will work fine. Tacky glue assists with building as it holds better during construction. You can use painter's/masking tape for some joins, but glue is always best.
- 3) Ensure you cleanup excess glue as you build. This is especially important in card lanes where dividers will be used or in spaces where a tray will be stored.
- 4) Check the build diagrams included in the package for reference, including all parts, as well as build tips specific to this insert.
- 5) Always **dry fit pieces first** to ensure a good fit and to better understand how the kit goes together.
- 6) Allow your finished insert to dry overnight.
- 7) You can optionally sand and even stain your insert.
- 8) Don't hesitate to reach out to us if you have questions!

Visit go7gaming.com for a large selection of storage solutions. Follow us on Twitter: [@go7gaming](https://twitter.com/go7gaming) and Facebook: [go7gaming](https://facebook.com/go7gaming)

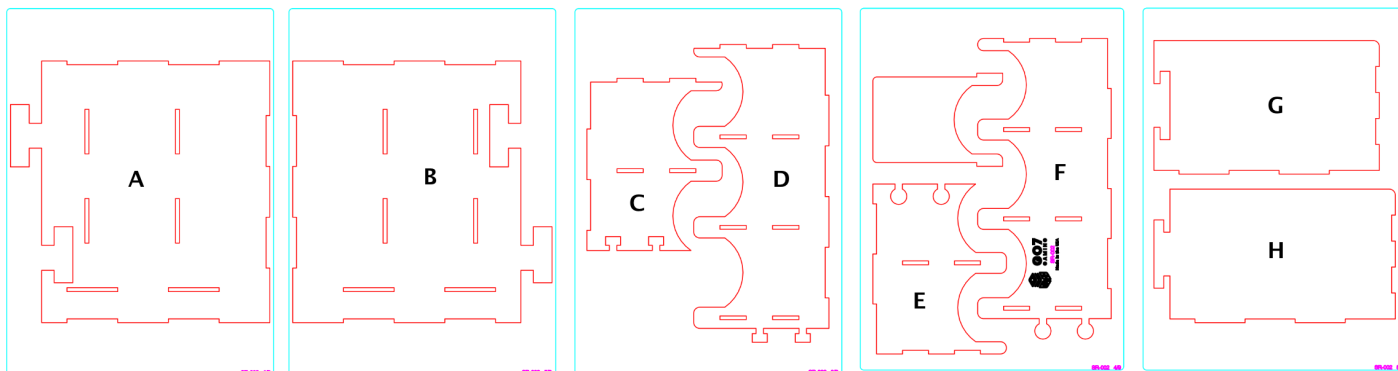
Go7 Gaming, Inc.
6001 W. Parmer Ln
Suite 370-119
Austin, TX 78727

MADE IN THE USA

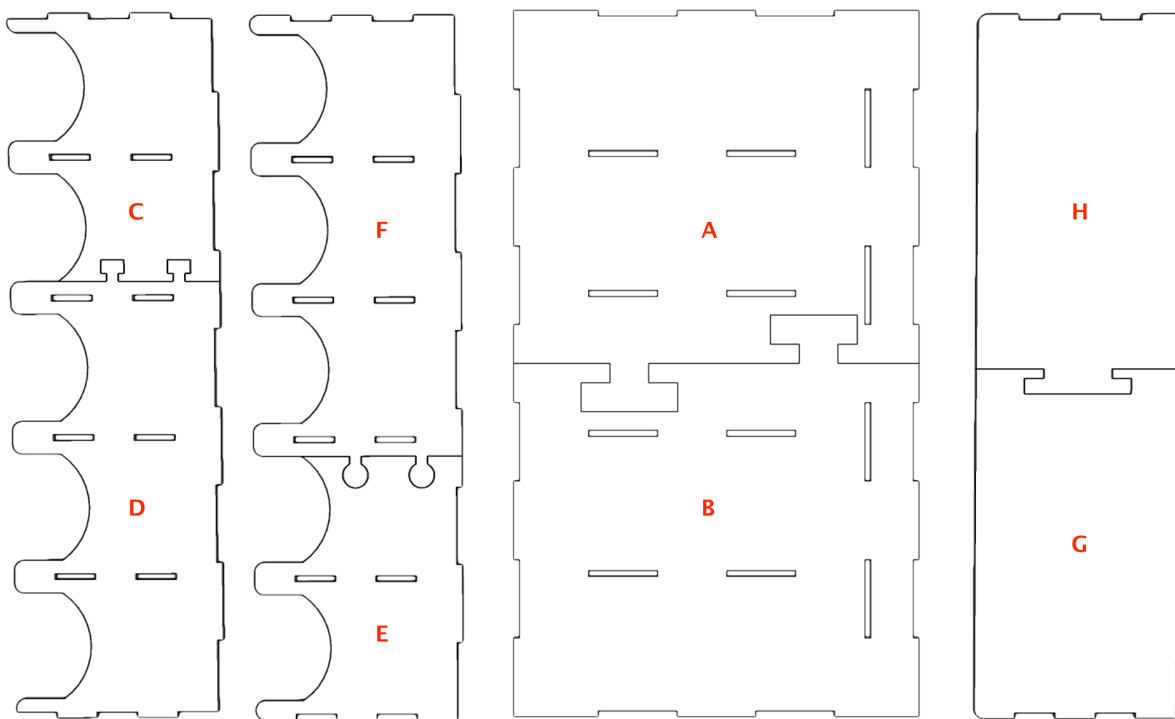
NOT A CHILDREN'S TOY
AGE 14+



Build Instructions



Please reference the diagrams to understand how each component fits together. Also, dry fit the pieces to understand how it goes together and ensure everything is oriented properly before applying glue. Finally, cleanup excess glue to ensure a proper fit and finish, especially in card, rail, and tray storage areas.

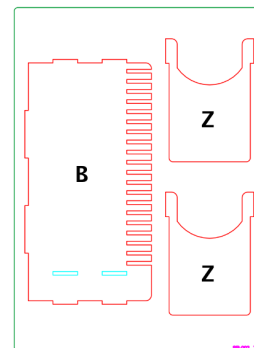
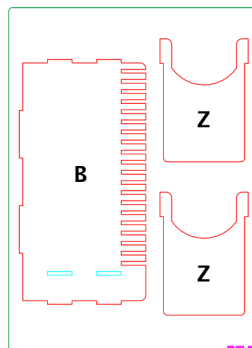
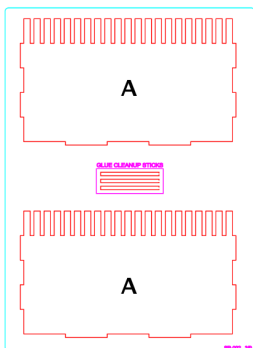
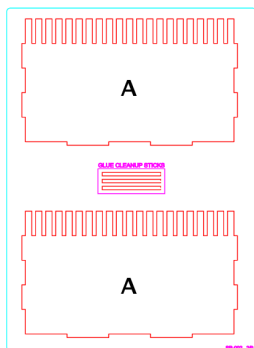


Constructing the Split Base and Walls

This storage solution requires that you first glue three walls and the base together. Once glued, you should allow these split pieces to dry properly overnight. Effectively connecting these split pieces requires that you apply glue on the edges where they join. To further reinforce the split pieces, feel free to rub glue into the lines where they connect. This will ensure a strong and lifelong connection.

- 1) Apply glue to the surface where walls (C) and (D) join and connect.
- 2) Next, apply glue to the surface where walls (E) and (F) join and connect.
- 3) Next, apply glue to the surface where bases (A) and (B) join and connect.
- 4) Next, apply glue to the surface where walls (G) and (H) join and connect.
- 5) Allow these pieces to dry overnight.

Build Instructions



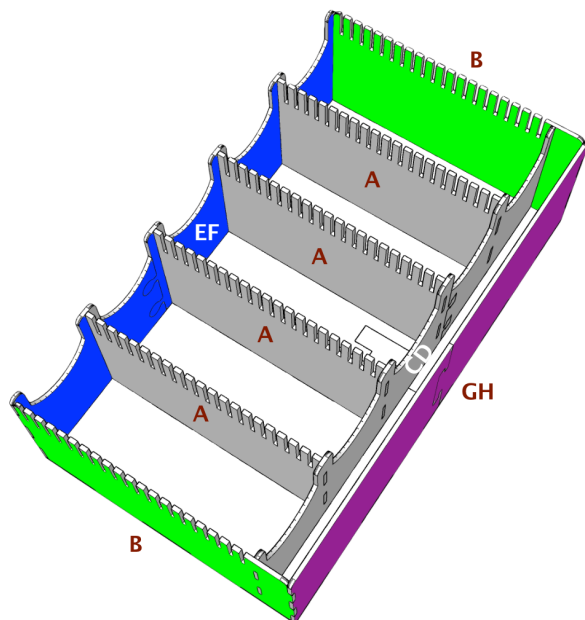
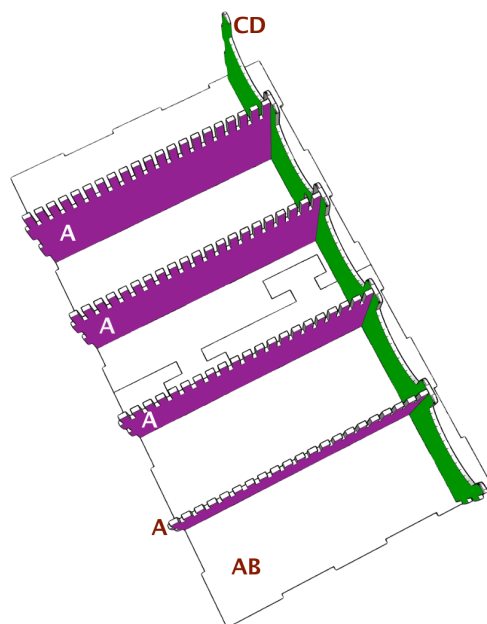
Please reference the diagrams to understand how each component fits together. Also, dry fit the pieces to understand how it goes together and ensure everything is oriented properly before applying glue. Finally, cleanup excess glue to ensure a proper fit and finish, especially in card, rail, and tray storage areas.

Building the Main Insert

The main insert provides storage for your cards and two playmats. The playmat area also has room for small rulebooks and large cards.

Tip: blue painters tape is a great aid for holding corners in place while the glue dries.

- 1) Place glue on the right side tabs of the four inner walls (A) and connect to long inner wall (CD).
- 2) Next, apply glue to the bottom of the structure you built in step #1 and connect to base (AB).



Building the Main Insert (cont'd)

- 3) Next, apply glue to the left side tabs of inner walls (A) and the bottom of outer wall (EF) and connect.
- 4) Next, apply glue to the side tabs of long inner wall (CD) and the side tabs and bottom of outer wall (B) and connect. Repeat on the other side.
- 5) Finally, apply glue to the bottom of outer wall (GH) and connect.

- 6) Once your insert has had five minutes to dry, place a dividers in each lane to ensure a perfect fit while drying.

Congratulations! You have completed the construction of your new storage solution.