

# DT-002 FOLDING DICE TOWER

This single, engraved birdhouse dice tower is great for all manner of dice chucking, bird-oriented games such as Wingspan



## Construction Tips

- 1) Each piece should be removed from the frames with gentle pressure back and forth. You should not need a knife to cut pieces free.
- 2) Our kits are designed to be glued together. We use Sobo craft glue, but any glue that is tacky and dries clear will work fine. Tacky glue assists with building as it holds better during construction.
- 3) Ensure you cleanup excess glue as you build.
- 4) Check the build diagrams included in the package for reference, including all parts, as well as build tips specific to this dice tower.
- 5) **Always dry fit pieces first** to ensure a good fit and to better understand how the kit goes together.
- 6) Allow your finished insert to dry overnight.
- 7) You can optionally stain or paint your dice tower whether engraved or not. We have had great success using Krylon spray paints. For best results with spray paints, spray the pieces while still in their frames and use fast successive passes at about 24 inches until you are happy with the paint coverage. Once dry, paint the other side too!
- 8) Don't hesitate to reach out to us if you have questions!

Visit [go7gaming.com](http://go7gaming.com) for a large selection of storage solutions. Follow us on Twitter: [@go7gaming](https://twitter.com/go7gaming) and Facebook: [go7gaming](https://facebook.com/go7gaming)

Go7 Gaming, Inc.  
6001 W. Parmer Ln  
Suite 370-119  
Austin, TX 78727

MADE IN THE USA

NOT A CHILDREN'S TOY  
**AGE 14+**



# Build Instructions

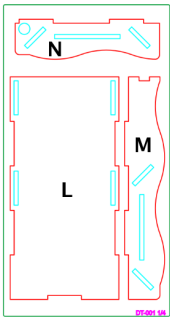


PLATE #1

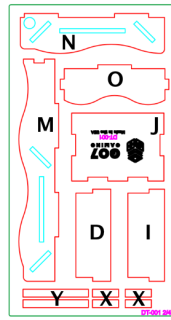


PLATE #2

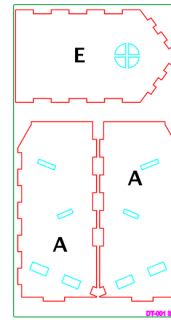


PLATE #3

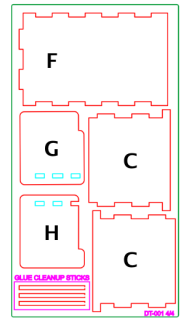


PLATE #4

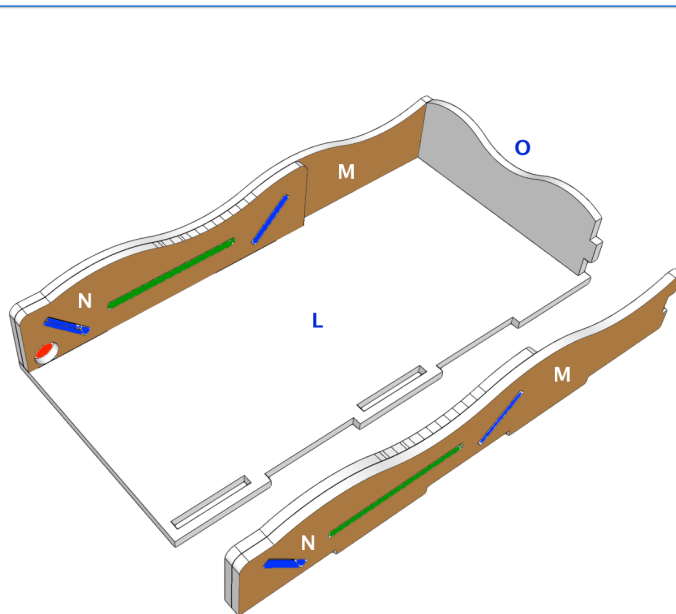
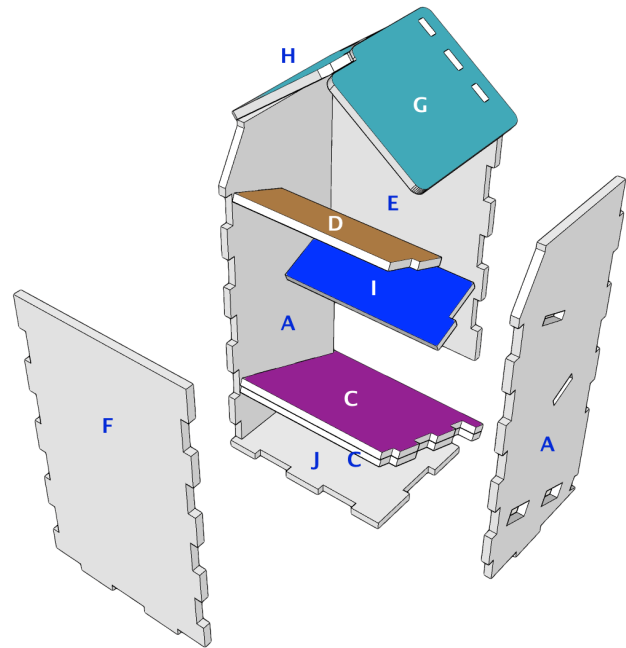
Please reference the diagrams to understand how each component fits together. Also, dry fit the pieces to understand how it goes together and ensure everything is oriented properly before applying glue. Finally, cleanup excess glue to ensure a proper fit and finish, especially in card, rail, and tray storage areas.

## Building the Birdhouse Dice Tower

The Birdhouse Dice Tower is designed to handle dice as large as 20mm and has been tested extensively with the wooden dice from Wingspan. Pay close attention to piece placement as you build and dry fit everything as you go.

**Note:** some dice tower models have engravings that are not reflected in these build images. Engraved faces should always be visible.

- 1) Orient left wall (A) as illustrated.
- 2) Next, apply glue to the left side tabs of die shelves (C, C, D, I) and connect to wall (A). Note the orientation of die shelves (D, I) and note that dice shelf (I) has smaller tabs than dice shelf (D).
- 3) Next, apply glue to the right side tabs of die shelves (C, C, D, I) and connect to wall (A) on the other side.
- 4) Next, apply glue to the side tabs of front wall (E) and connect.
- 5) Next, apply glue to the side tabs of rear wall (F) and connect.
- 6) Next, apply glue to the side tabs of base (J) and connect.
- 7) Next, apply glue to the upper tabs on front wall (E) and the points where the two roof (G, H) pieces touch each other and connect.



## Building the Dice Tray

The Dice Tray is designed to connect to the Birdhouse Dice Tower permanently. When not in use, the Birdhouse folds into this Dice Tray and provides storage for the dice and other small items.

- 1) Orient base (L) as illustrated.
- 2) Next, apply a very light bit of glue between side walls (M, N) and join them together, then apply glue into the {blue} and {green} slots and insert the pins (X, X, Y). Press on the joined pieces to ensure excess glue is ejected and cleaned up. Repeat for the other side walls.
- 3) Next, apply glue to the bottom of the joined side walls (M, N) and connect to base (L) on the left side.
- 4) Next, slide the large tab on the left side that is comprised of pieces (C,C) from the birdhouse above into the {red} hole (no glue here!) on the left side walls (M, N), then apply glue to the bottom of the right side walls (M, N) and connect, ensuring the large tab on the right side is seated in the circle of the right side walls (M, N).
- 5) Finally, apply glue to the bottom and side tabs of end wall (O) and connect.

Allow your dice tray to dry overnight before use!