

BLOODB-004 STORAGE SOLUTION

Organizer for Bloodborne™ Board Game large expansion Chalice Dungeon box

This kit provides storage for minis from the expansions



Construction Tips

- 1) Each piece should be removed from the frames with gentle pressure back and forth. You should not need a knife to cut pieces free.
- 2) Our organizers are designed to be glued together. We use Sobo craft glue, but any glue that is tacky and dries clear will work fine. Tacky glue assists with building as it holds better during construction. You can use painter's/masking tape for some joins, but glue is always best.
- 3) Ensure you cleanup excess glue as you build. This is especially important in card lanes where dividers will be used or in spaces where a tray will be stored.
- 4) Check the build diagrams included in the package for reference, including all parts, as well as build tips specific to this insert.
- 5) **Always dry fit pieces first** to ensure a good fit and to better understand how the kit goes together.
- 6) Allow your finished insert to dry overnight.
- 7) You can optionally sand and even stain your insert.
- 8) Don't hesitate to reach out to us if you have questions!

Visit go7gaming.com for a large selection of storage solutions. Follow us on Twitter: [@go7gaming](https://twitter.com/go7gaming) and Facebook: [go7gaming](https://www.facebook.com/go7gaming)

Go7 Gaming, Inc.
6001 W. Parmer Ln
Suite 370-119
Austin, TX 78727

MADE IN THE USA

NOT A CHILDREN'S TOY
AGE 14+



6 80577 94556 2

Build Instructions

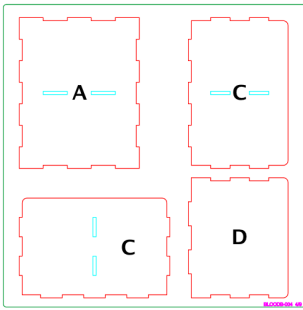


PLATE #4

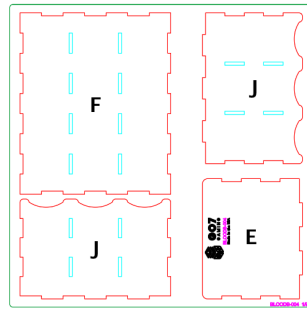


PLATE #1

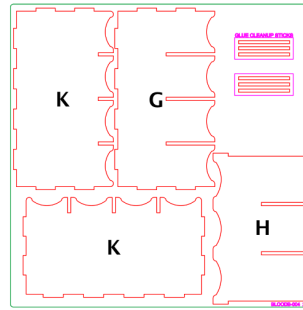


PLATE #2

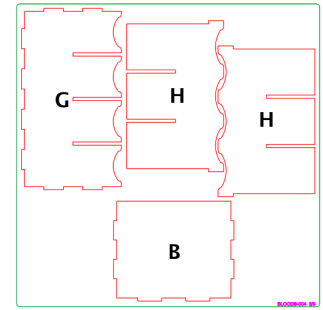


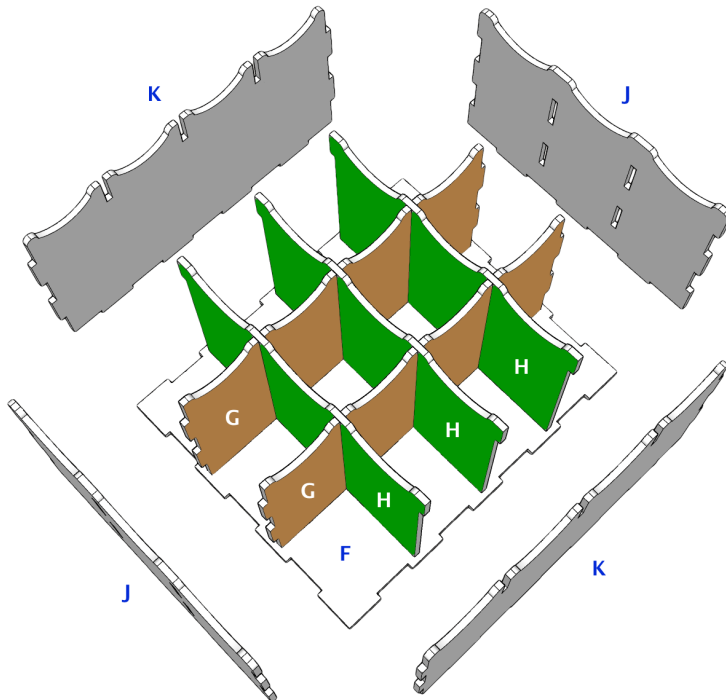
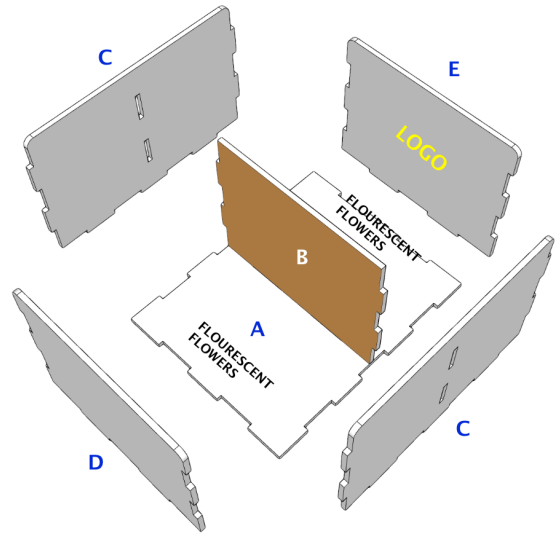
PLATE #3

Please reference the diagrams to understand how each component fits together. Also, dry fit the pieces to understand how it goes together and ensure everything is oriented properly before applying glue. Finally, cleanup excess glue to ensure a proper fit and finish, especially in card, rail, and tray storage areas.

Building the Two Mini Tray

The Two Mini Tray is designed to hold the two Fluorescent Flowers.

- 1) Orient base (A) as illustrated.
- 2) Next, apply glue to the bottom and side tabs of inner wall (B) and connect to base (A). **{brown}**
- 3) Next, apply glue to the bottom and side tabs of outer walls (C, C) and connect.
- 4) Finally, apply glue to the bottom of outer walls (D, E) and connect.

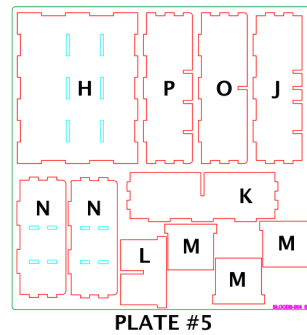
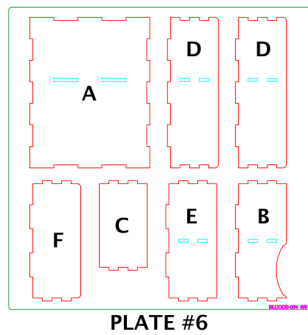


Building the Tall Minis Tray

The Tall Minis Tray is designed to hold twelve larger minis (4x Large Huntsmen, 4x Giant Lost Child, and 4x Loran Silverbeasts.)

- 1) Orient base (F) as illustrated.
- 2) Next, apply glue to the bottom and side tabs of inner walls (G, G) and connect to base (F). **{brown}**
- 3) Next, apply glue to the bottom and side tabs of inner walls (H, H, H) and connect to base (F). **{green}**
- 4) Next, apply glue to the bottom of outer walls (J, J) and connect.
- 5) Finally, apply glue to the bottom of outer walls (K, K) and connect.

Build Instructions

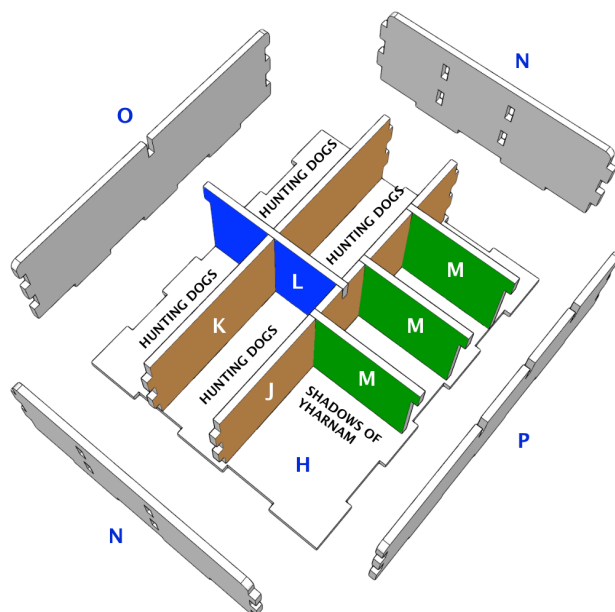
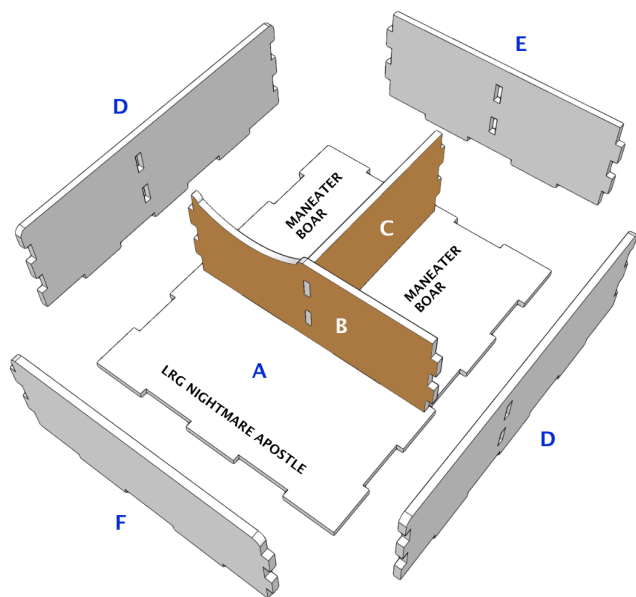


Please reference the diagrams to understand how each component fits together. Also, dry fit the pieces to understand how it goes together and ensure everything is oriented properly before applying glue. Finally, cleanup excess glue to ensure a proper fit and finish, especially in card, rail, and tray storage areas.

Building the Three Mini Tray

The Three Mini Tray is designed to hold three minis.

- 1) Orient base (A) as illustrated.
- 2) Next, apply glue to the bottom and side tabs of inner walls (B, C) and connect them together and to the base (A). **{brown}**
- 3) Next, apply glue to the bottom of walls (D, D) and connect.
- 4) Next, apply glue to the bottom and side tabs of outer wall (E) and connect.
- 5) Finally, apply glue to the bottom and side tabs of outer wall (F) and connect.



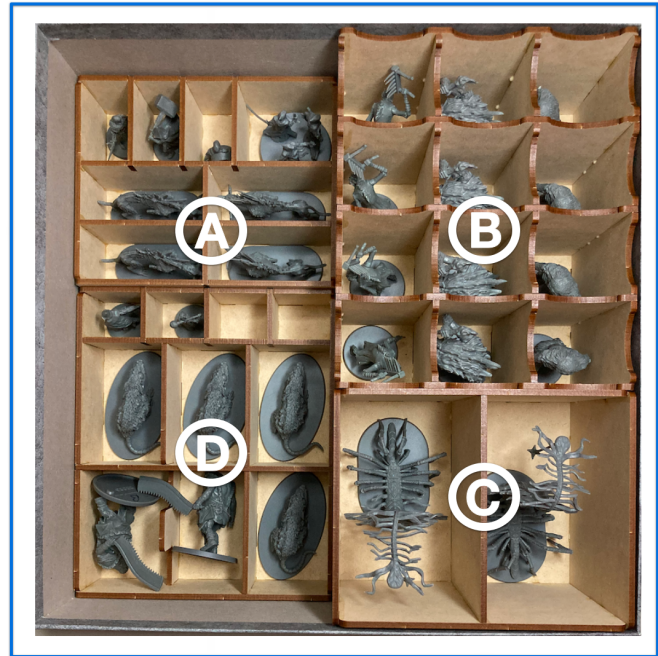
Building the Eight Mini Tray

The Eight Mini Tray is designed to hold eight minis.

- 1) Orient base (H) as illustrated.
- 2) Next, apply glue to the bottom and side tabs of inner walls (J, K) and connect to base (H). **{brown}**
- 3) Next, apply glue to the bottom and side tabs of splitters (L, M, M, M) and connect. **{blue}** **{green}**
- 4) Next, apply glue to the bottom and side tabs of outer walls (N, N) and connect.
- 5) Finally, apply glue to the bottom of outer walls (O, P) and connect.

Storing Your Trays in the Box

Step One: Place the Eight Mini Tray (A), the Tall Minis Tray (B), the Two Mini Tray (C), and the Minis Tray #1 (D) into the box.



Step Two: Place the Three Mini Tray (F) and the Ten Mini Tray (G) on top of the existing trays and then close the box.

