

# BLOODB-003 STORAGE SOLUTION

Organizer for Bloodborne™ Board Game large expansion boxes: Forbidden or Cainhurst

This kit provides storage for expansion map tiles and cards



## Construction Tips

- 1) Each piece should be removed from the frames with gentle pressure back and forth. You should not need a knife to cut pieces free.
- 2) Our organizers are designed to be glued together. We use Sobo craft glue, but any glue that is tacky and dries clear will work fine. Tacky glue assists with building as it holds better during construction. You can use painter's/masking tape for some joins, but glue is always best.
- 3) Ensure you cleanup excess glue as you build. This is especially important in card lanes where dividers will be used or in spaces where a tray will be stored.
- 4) Check the build diagrams included in the package for reference, including all parts, as well as build tips specific to this insert.
- 5) **Always dry fit pieces first** to ensure a good fit and to better understand how the kit goes together.
- 6) Allow your finished insert to dry overnight.
- 7) You can optionally sand and even stain your insert.
- 8) Don't hesitate to reach out to us if you have questions!

Visit [go7gaming.com](http://go7gaming.com) for a large selection of storage solutions. Follow us on Twitter: [@go7gaming](https://twitter.com/go7gaming) and Facebook: [go7gaming](https://www.facebook.com/go7gaming)

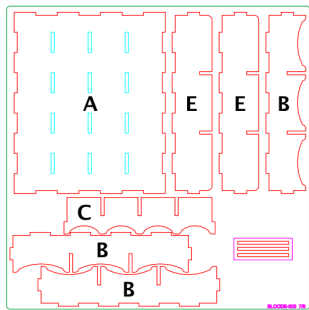
Go7 Gaming, Inc.  
6001 W. Parmer Ln  
Suite 370-119  
Austin, TX 78727

MADE IN THE USA

NOT A CHILDREN'S TOY  
**AGE 14+**



# Build Instructions



PLATES #7,8

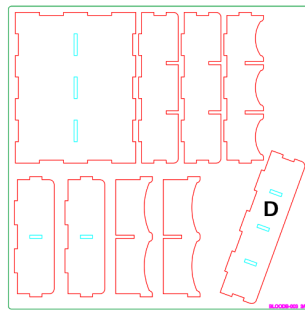


PLATE #3,4,5,6

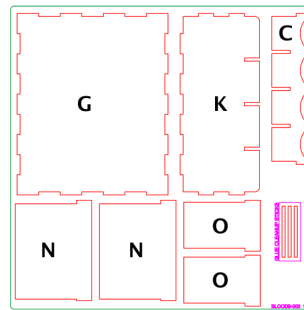


PLATE #1

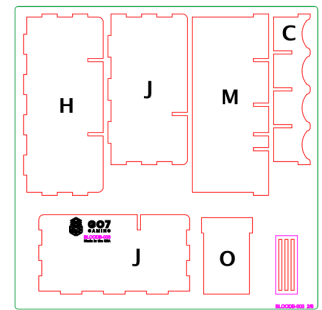


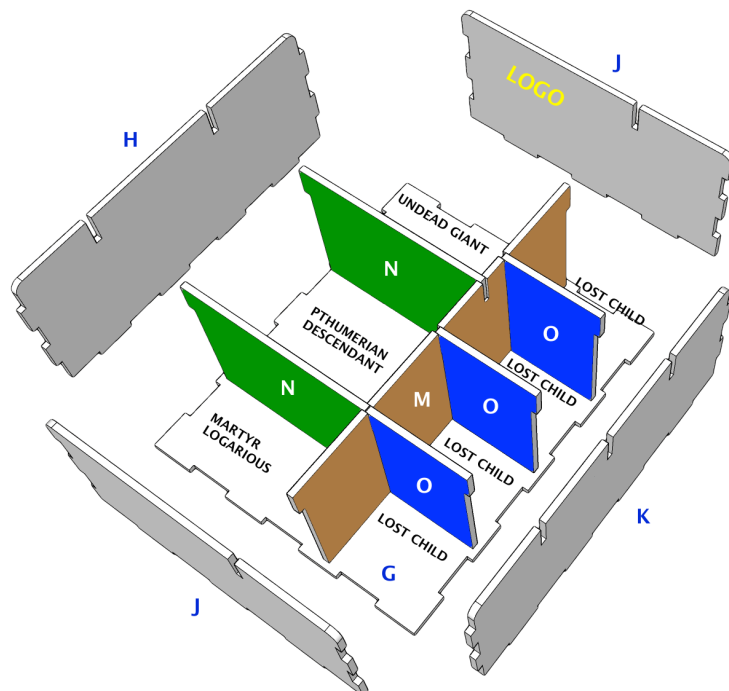
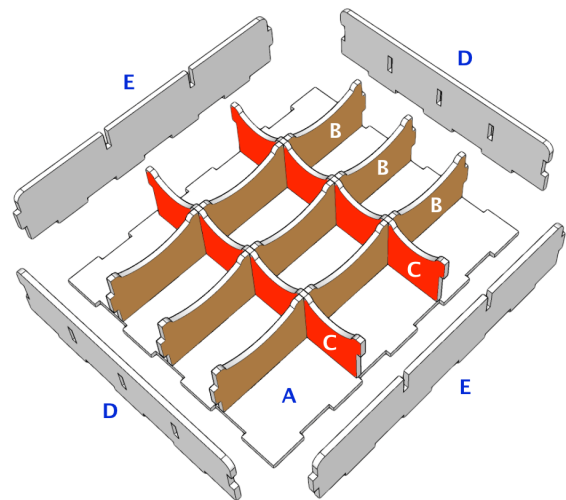
PLATE #2

Please reference the diagrams to understand how each component fits together. Also, dry fit the pieces to understand how it goes together and ensure everything is oriented properly before applying glue. Finally, cleanup excess glue to ensure a proper fit and finish, especially in card, rail, and tray storage areas.

## Building the Long Minis Trays

The Long Minis Trays are designed to store twelve small minis.

- 1) Orient base (A) as illustrated.
- 2) Next, apply glue to the bottom and side tabs of inner walls (B, B, B) and connect to base (A). {brown}
- 3) Next, apply glue to the bottom and side tabs of walls (C, C) and connect. {red}
- 4) Next, apply glue to the bottom and side tabs of outer walls (D, D) and connect.
- 5) Finally, apply glue to the bottom of outer walls (E, E) and connect.
- 6) Repeat steps 1-5 and build the second tray.



## Building the Large Minis Tray

The Large Minis Tray is designed to hold larger minis.

- 1) Orient base (G) as illustrated.
- 2) Next, apply glue to the bottom and side tabs of outer wall (H) and connect.
- 3) Next, apply glue to the bottom of outer walls (J, J) and connect.
- 4) Next, apply glue to the bottom and side tabs of outer wall (K) and connect.
- 5) Next, apply glue to the bottom and side tabs of inner wall (M) and connect. {brown}
- 6) Next, apply glue to the bottom and side tabs of splitters (N, N) and connect. {green}
- 7) Next, apply glue to the bottom and side tabs of splitters (O, O, O) and connect. {blue}

# Build Instructions

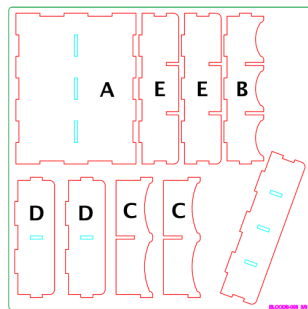


PLATE #3,4

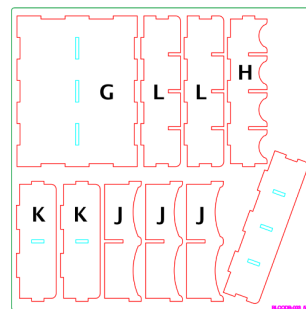


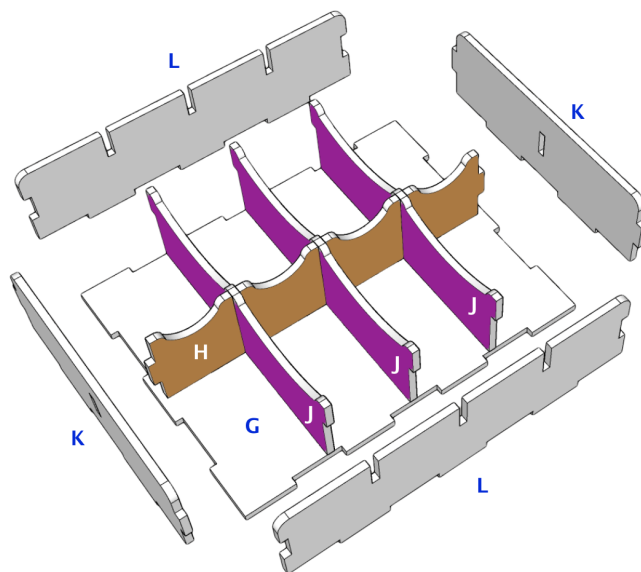
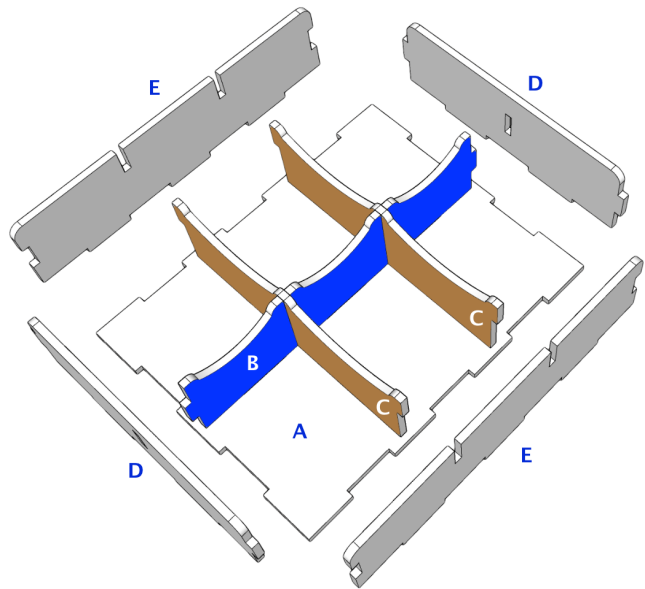
PLATE #5,6

Please reference the diagrams to understand how each component fits together. Also, dry fit the pieces to understand how it goes together and ensure everything is oriented properly before applying glue. Finally, cleanup excess glue to ensure a proper fit and finish, especially in card, rail, and tray storage areas.

## Building the Six Mini Trays

The Six Mini Trays are designed to hold six small minis.

- 1) Orient base (A) as illustrated.
- 2) Next, apply glue to the bottom of wall (B) and connect to base (A). **{blue}**
- 3) Next, apply glue to the bottom and side tabs of walls (C, C) and connect. **{brown}**
- 4) Next, apply glue to the bottom and side tabs of walls (D, D) and connect.
- 5) Next, apply glue to the bottom of walls (E, E) and connect.
- 6) Repeat steps 1-5 and build the second tray.



## Building the Eight Mini Trays

The Eight Mini Trays are designed to hold eight small minis.

- 1) Orient base (G) as illustrated.
- 2) Next, apply glue to the bottom of wall (H) and connect to base (A). **{brown}**
- 3) Next, apply glue to the bottom and side tabs of walls (J, J, J) and connect. **{purple}**
- 4) Next, apply glue to the bottom and side tabs of walls (K, K) and connect.
- 5) Next, apply glue to the bottom of walls (L, L) and connect.
- 6) Repeat steps 1-5 and build the second tray.



# Storing Your Trays in the Box

**Step One:** Place the Large Minis Tray (A), the Eight Mini Tray (B), the Six Mini Tray (C), and the Long Minis Tray (D).



**Step Two:** Next, place the Eight Mini Tray (E), the Six Mini Tray (F), and the Long Minis Tray (G) into the box and close the lid.

