

BLOODB-002 STORAGE SOLUTION

Organizer for Bloodborne™ Board Game large expansion boxes: Forbidden or Cainhurst
This kit provides storage for expansion map tiles and cards



Construction Tips

- 1) Each piece should be removed from the frames with gentle pressure back and forth. You should not need a knife to cut pieces free.
- 2) Our organizers are designed to be glued together. We use Sobo craft glue, but any glue that is tacky and dries clear will work fine. Tacky glue assists with building as it holds better during construction. You can use painter's/masking tape for some joins, but glue is always best.
- 3) Ensure you cleanup excess glue as you build. This is especially important in card lanes where dividers will be used or in spaces where a tray will be stored.
- 4) Check the build diagrams included in the package for reference, including all parts, as well as build tips specific to this insert.
- 5) **Always dry fit pieces first** to ensure a good fit and to better understand how the kit goes together.
- 6) Allow your finished insert to dry overnight.
- 7) You can optionally sand and even stain your insert.
- 8) Don't hesitate to reach out to us if you have questions!

Visit go7gaming.com for a large selection of storage solutions. Follow us on Twitter: [@go7gaming](https://twitter.com/go7gaming) and Facebook: [go7gaming](https://www.facebook.com/go7gaming)

Go7 Gaming, Inc.
6001 W. Parmer Ln
Suite 370-119
Austin, TX 78727

MADE IN THE USA

NOT A CHILDREN'S TOY
AGE 14+



6 80577 94556 2

Build Instructions

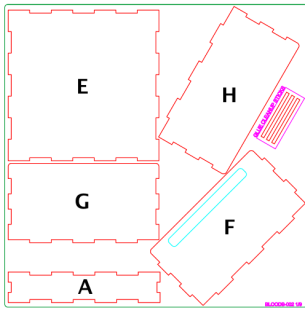


PLATE #1

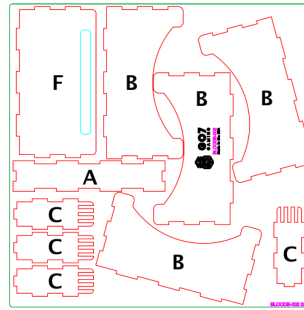


PLATE #2

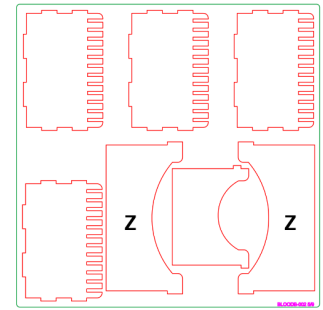


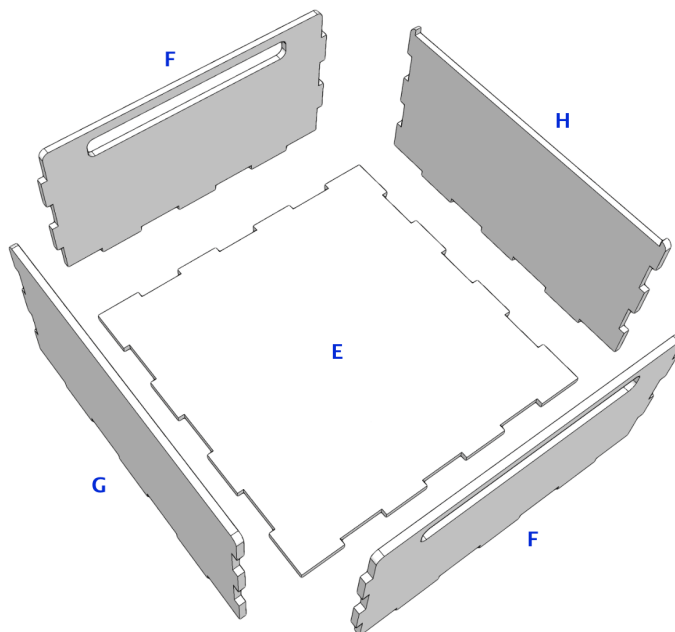
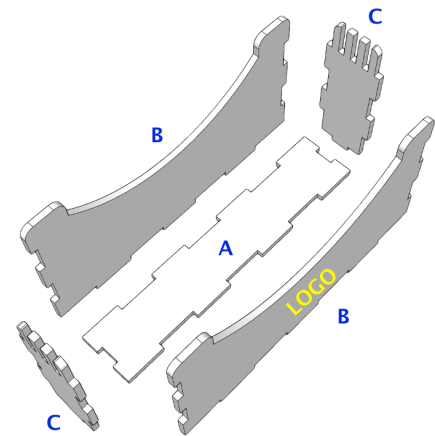
PLATE #5

Please reference the diagrams to understand how each component fits together. Also, dry fit the pieces to understand how it goes together and ensure everything is oriented properly before applying glue. Finally, cleanup excess glue to ensure a proper fit and finish, especially in card, rail, and tray storage areas.

Building the Jumbo Card Tray

The Jumbo Card Tray is designed to hold the jumbo cards included in the game.

- 1) Orient base (A) as illustrated.
- 2) Next, apply glue to the bottom and side tabs of wall (C) and connect to base (A).
- 3) Next, apply glue to the bottom of walls (B, B) and connect.
- 4) Finally, apply glue to the bottom and side tabs of wall (C) and connect.
- 5) After allowing the glue to dry for a few minutes, place a divider (Z) in the tray.
- 6) Repeat steps #1 - #5 to build the second tray.

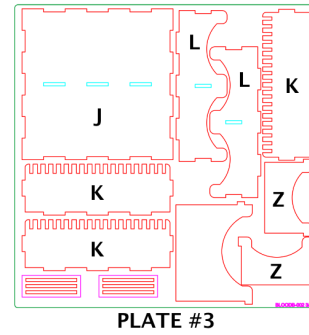
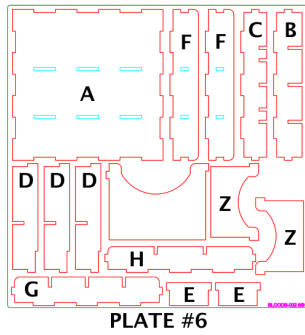


Building the Map Tiles Tray

The Map Tiles Tray provides storage for map tiles from the expansion content for the game. This tray also has a cutout that allows for the storage of the long rectangle map tile on top.

- 1) Orient base (E) as illustrated.
- 2) Next, apply glue to the bottom and side tabs of wall (F) and connect to base (E).
- 3) Next, apply glue to the bottom of walls (G, H) and connect.
- 4) Finally, apply glue to the bottom and side tabs of wall (F) and connect.

Build Instructions

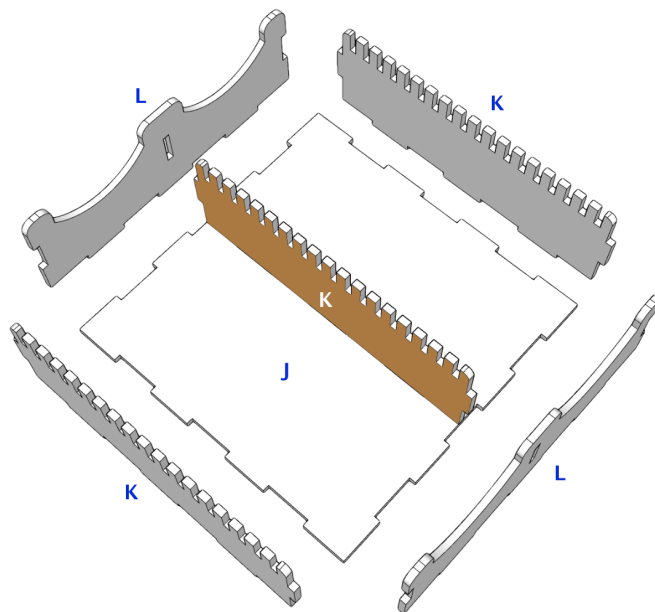
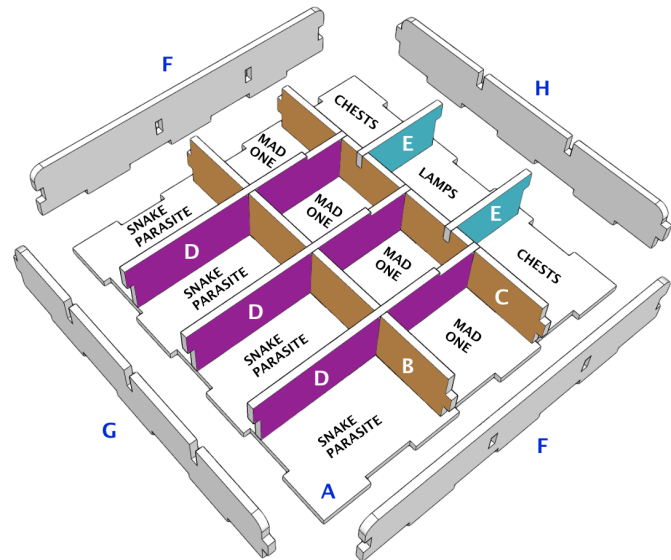


Please reference the diagrams to understand how each component fits together. Also, dry fit the pieces to understand how it goes together and ensure everything is oriented properly before applying glue. Finally, cleanup excess glue to ensure a proper fit and finish, especially in card, rail, and tray storage areas.

Building the Minis Tray

The Minis Tray is designed to hold small minis from Blood Moon and Forbidden Woods.

- 1) Orient base (A) as illustrated.
- 2) Next, apply glue to the bottom and side tabs of walls (B, C) and connect to base (A). **{brown}**
- 3) Next, apply glue to the bottom and side tabs of cross walls (D, D, D) and connect. **{purple}**
- 4) Next, apply glue to the bottom of walls (F, F) and connect.
- 5) Next, apply glue to the bottom and side tabs of walls (G, H) and connect.
- 6) Finally, apply glue to the bottom and side tabs of splitters (E, E) and connect. **{cyan}**



Building the Small Card Tray

The Small Card Tray is designed to hold the small cards.

- 1) Orient base (J) as illustrated.
- 2) Next, apply glue to the bottom and side tabs of wall (K) and connect to base (J). **{brown}**
- 3) Next, apply glue to the bottom of outer walls (L, L) and connect.
- 4) Finally, apply glue to the bottom of outer walls (K, K) and connect.
- 5) Allow the glue to set for a few minutes and then place a few dividers (Z) to ensure a perfect fit once dry.

Build Instructions

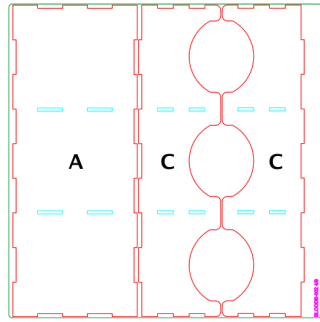


PLATE #4

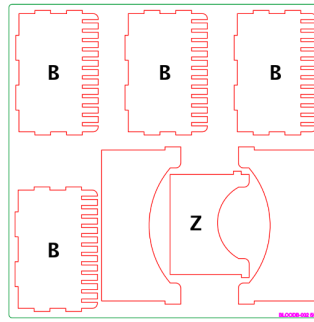


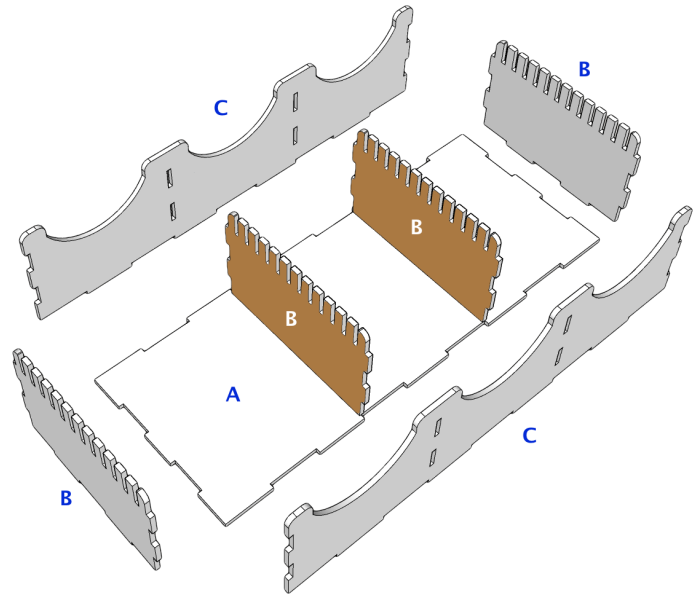
PLATE #5

Building the Large Card Tray

The Large Card Tray is designed to store all remaining large cards, if you don't sleeve and you own all content.

- 1) Orient base (A) as illustrated.
- 2) Next, apply glue to the bottom and side tabs of walls (B, B) and connect to base (A). **{brown}**
- 3) Next, apply glue to the bottom walls (C, C) and connect.
- 4) Finally, apply glue to the bottom and side tabs of walls (B, B) and connect.

5) Allow the glue to set for a few minutes and then place a few dividers (Z) to ensure a perfect fit once dry.



Storing Your Trays in the Box

Step One: Place the Large Card Tray (A), the Jumbo Card Trays (B, C), the Small Card Tray (D), and the Map Tile Tray (E) into the box.

Step Two: Place the Minis Tray (F) and the long rectangular map tile (G) on top of the existing trays and then close the box.

