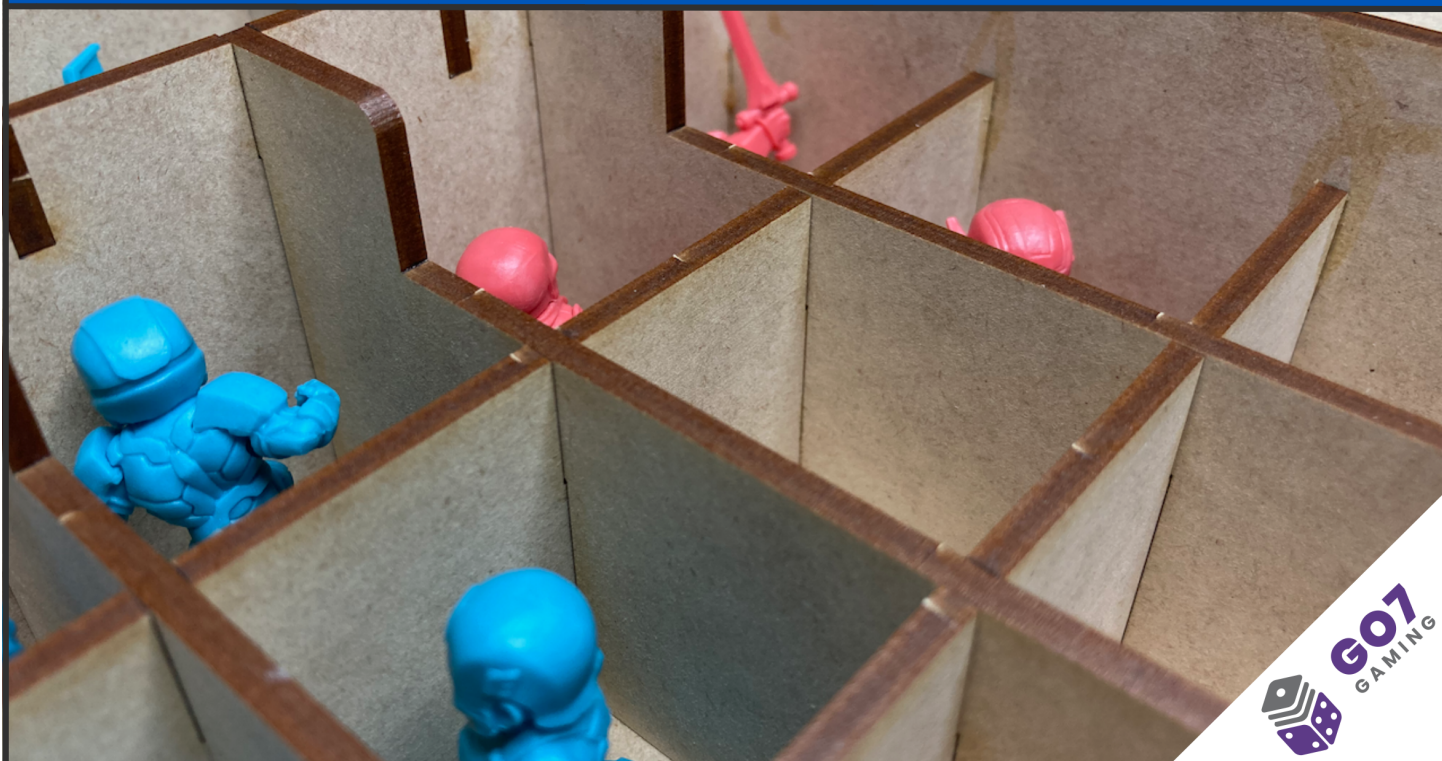


# MU-001 STORAGE SOLUTION

Storage Organizer for Marvel™ United or Marvel™ United: X-Men

Organizer kit includes storage for cards, tokens, and minis



## Construction Tips

- 1) Each piece should be removed from the frames with gentle pressure back and forth. You should not need a knife to cut pieces free.
- 2) Our inserts are designed to be glued together. We use Sobo craft glue, but any glue that is tacky and dries clear will work fine. Tacky glue assists with building as it holds better during construction. You can use painter's/masking tape for some joins, but glue is always best.
- 3) Ensure you cleanup excess glue as you build. This is especially important in card lanes where dividers will be used or in spaces where a tray will be stored.
- 4) Check the build diagrams included in the package for reference, including all parts, as well as build tips specific to this insert.
- 5) **Always dry fit pieces first** to ensure a good fit and to better understand how the kit goes together.
- 6) Allow your finished insert to dry overnight.
- 7) You can optionally sand and even stain your insert.
- 8) Don't hesitate to reach out to us if you have questions!

Visit [go7gaming.com](https://go7gaming.com) for a large selection of storage solutions.  
Follow us on Twitter: [@go7gaming](https://twitter.com/go7gaming), Facebook: [go7gaming](https://facebook.com/go7gaming), and Instagram: [go7gaming](https://instagram.com/go7gaming)

Go7 Gaming, Inc.  
6001 W. Parmer Ln  
Suite 370-119  
Austin, TX 78727

MADE IN THE USA

NOT A CHILDREN'S TOY  
**AGE 14+**



# Build Instructions

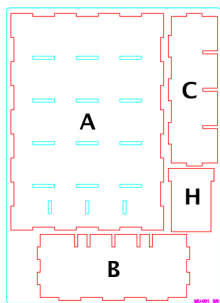


PLATE #5

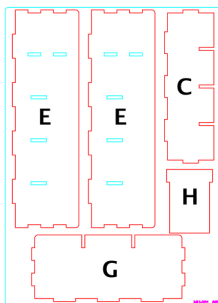


PLATE #6

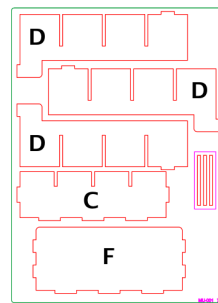


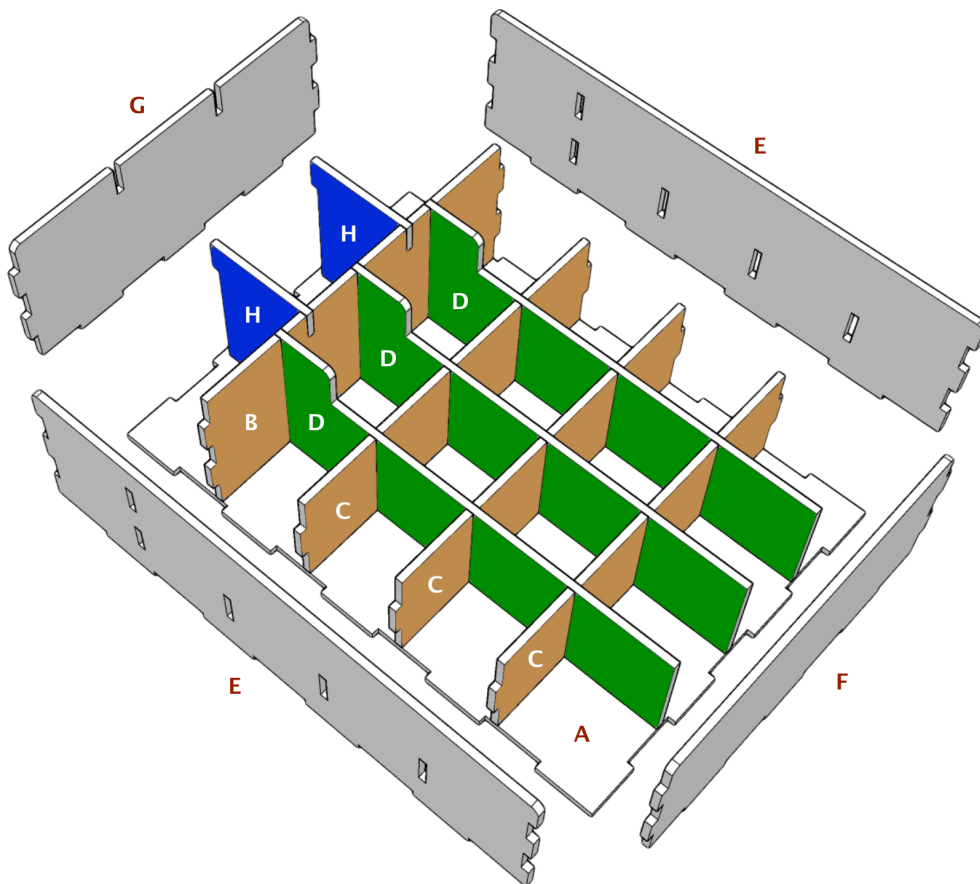
PLATE #7

Please reference the diagrams to understand how each component fits together. Also, dry fit the pieces to understand how it goes together and ensure everything is oriented properly before applying glue. Finally, cleanup excess glue to ensure a proper fit and finish, especially in card, rail, and tray storage areas.

## Building the Minis Tray

The Minis Tray is designed to store the base game minis, with room for nine additional expansion minis. This tray has a recessed area used for storing location cards/boards.

- 1) Orient the base (A) as illustrated.
- 2) Next, apply glue to the bottom and side tabs of inner walls (B, C, C, C) and connect to base (A). **{brown}**
- 3) Next, apply glue to the side tabs and bottom of each inner wall (D, D, D) and connect. **{green}**
- 4) Next, apply glue to the bottom of long outer walls (E, E) and connect.
- 5) Next, apply glue to the side tabs and bottom of outer walls (F, G) and connect.
- 6) Finally, apply glue to the side tabs of splitter walls (H, H) and connect. **{blue}**



# Build Instructions

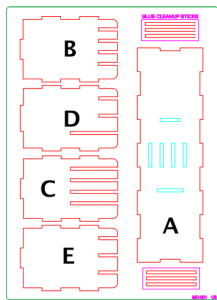


PLATE #1

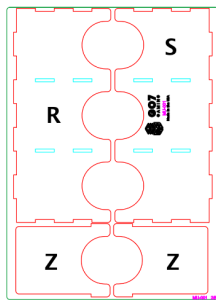


PLATE #2

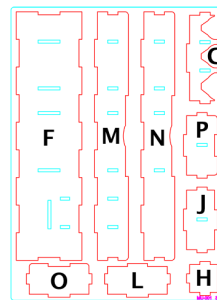


PLATE #3

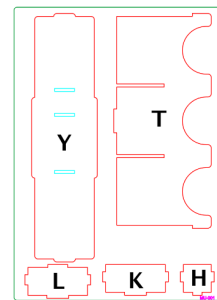


PLATE #4

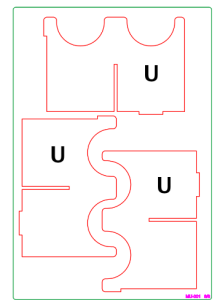


PLATE #8

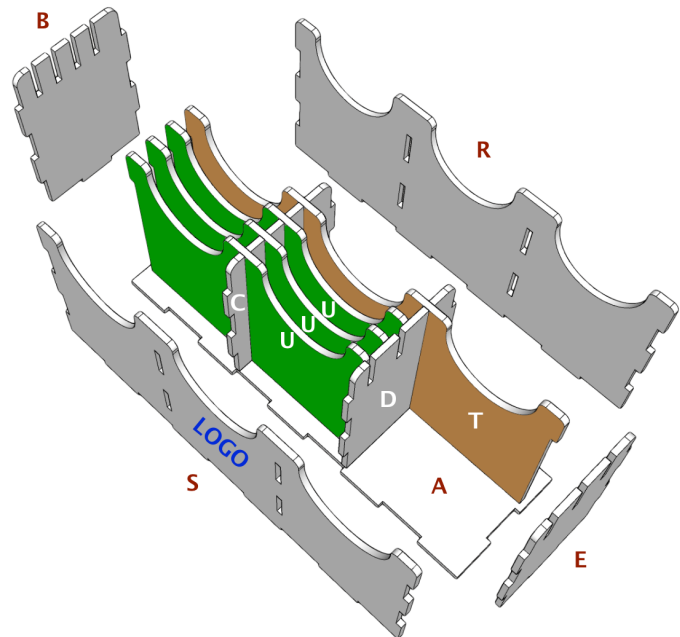
Please reference the diagrams to understand how each component fits together. Also, dry fit the pieces to understand how it goes together and ensure everything is oriented properly before applying glue. Finally, cleanup excess glue to ensure a proper fit and finish, especially in card, rail, and tray storage areas.

## Building the Card Tray

The Card Tray is designed to store your sleeved/unsleeved cards.

- 1) Lay base (A) down on your workspace.
- 2) Next, apply glue to the bottom and side tabs of inner walls (C, D) and connect to base (A).
- 3) Next, apply glue to the bottom of inner divider walls (T, U, U, U) and connect.
- 4) Next, apply glue to the bottom of outer walls (R, S) and connect. Note logo facing direction on outer wall (S).
- 4) Finally, apply glue to the bottom and side tabs of end walls (B, E) and connect.

Once your tray has had a few minutes to dry, place the two dividers (Z) into the open slots and allow it to dry.



## Building the Token Tray

This Token Tray is designed to store all tokens in the base game for use during play.

- 1) Lay base (F) down on your workspace.
- 2) Next, apply glue to the left side tabs and connect small walls (H, H) to inner wall (G). {brown}
- 3) Next, apply glue to the left side tab of the structure you built in step #2 and connect to wall (J). **Note:** ensure wall (J) is oriented properly such that the bottom tab fills the cutout in the base. {green}
- 4) Next, apply glue to the bottom of the structure you built in step #3 and connect to base (F).
- 5) Next, apply glue to the side tabs and bottom of walls (K, L, L) and connect. **Note:** ensure walls (L, L) are oriented properly such that the bottom tab fills the cutout in the base (F), otherwise the lid will not fit properly. {purple}
- 6) Next, apply glue to the bottom of outer walls (M, N) and connect.
- 7) Finally, apply glue to the bottom and side tabs of end walls (O, P) and connect.

Once your tray has had a few minutes to dry, place the lid (Y) on it and allow it to dry.

