

BLOODB-006 STORAGE SOLUTION

Organizer for Bloodborne™ expansion box Yahar'gul/Byrgenwerth/Mergo's
This kit provides storage for minis and two map tiles



Construction Tips

- 1) Each piece should be removed from the frames with gentle pressure back and forth. You should not need a knife to cut pieces free.
- 2) Our organizers are designed to be glued together. We use Sobo craft glue, but any glue that is tacky and dries clear will work fine. Tacky glue assists with building as it holds better during construction. You can use painter's/masking tape for some joins, but glue is always best.
- 3) Ensure you cleanup excess glue as you build. This is especially important in card lanes where dividers will be used or in spaces where a tray will be stored.
- 4) Check the build diagrams included in the package for reference, including all parts, as well as build tips specific to this insert.
- 5) **Always dry fit pieces first** to ensure a good fit and to better understand how the kit goes together.
- 6) Allow your finished insert to dry overnight.
- 7) You can optionally sand and even stain your insert.
- 8) Don't hesitate to reach out to us if you have questions!

Visit go7gaming.com for a large selection of storage solutions. Follow us on Twitter: [@go7gaming](https://twitter.com/go7gaming) and Facebook: [go7gaming](https://www.facebook.com/go7gaming)

Go7 Gaming, Inc.
6001 W. Parmer Ln
Suite 370-119
Austin, TX 78727

MADE IN THE USA

NOT A CHILDREN'S TOY
AGE 14+



Build Instructions

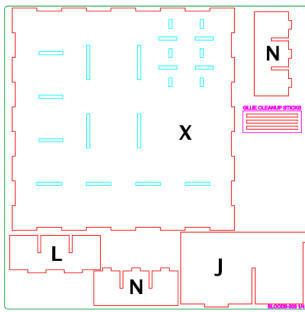


PLATE #1

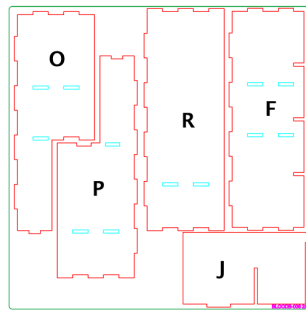


PLATE #2

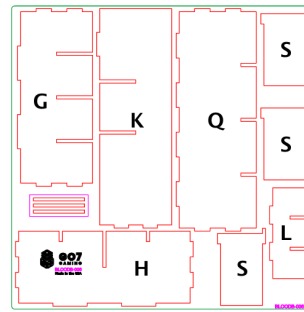


PLATE #3

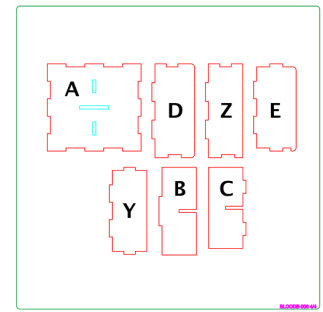


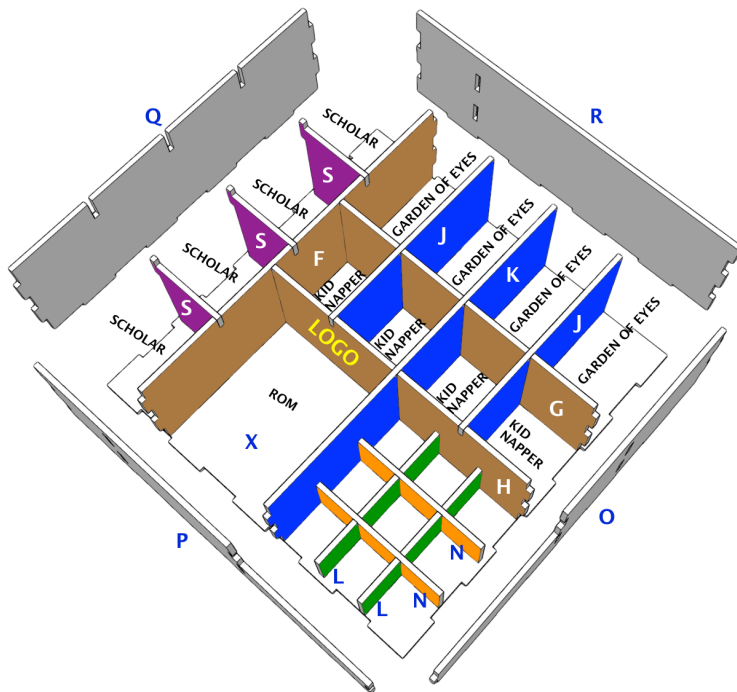
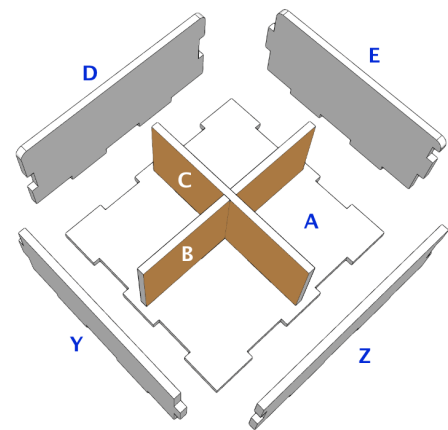
PLATE #4

Please reference the diagrams to understand how each component fits together. Also, dry fit the pieces to understand how it goes together and ensure everything is oriented properly before applying glue. Finally, cleanup excess glue to ensure a proper fit and finish, especially in card, rail, and tray storage areas.

Building the Small Tray

The Small Tray can be used to store four small minis. Pay close attention to the image and orientation when building this tray or map tiles will not sit flush in the solution.

- 1) Orient base (A) as illustrated.
- 2) Next, apply glue to the bottom of splitter wall (B, C) and connect to base (A). **{brown}**
- 3) Next, apply glue to the bottom of outer wall (D) and connect.
- 4) Next, apply glue to the bottom and side tabs of outer walls (E, Y) and connect.
- 5) Finally, apply glue to the bottom of outer wall (Z) and connect.



Building the Main Organizer

The Main Organizer is designed to store minis and up to two map tiles on top of the tray.

- 1) Orient base (X) as illustrated.
- 2) Next, apply glue to the left side tabs of inner walls (G, H) and connect to inner wall (F), then apply glue to the bottom of this structure and connect to base (X). **{brown}**
- 3) Next, apply glue to the bottom and side tabs of inner walls (J, J, K). **{blue}**
- 4) Next, apply glue to the bottom of splitter walls (L, L, N, N) and connect.
- 5) Next, apply glue to the bottom of outer wall (R) and connect.
- 6) Next, apply glue to the bottom and side tabs of outer walls (Q, O) and connect.
- 7) Next, apply glue to the bottom of outer wall (P) and connect.
- 8) Finally, apply glue to the side tabs of inner splitters (S, S, S) and connect. **{purple}**