

# MUD-002 STORAGE SOLUTION

Storage Solution compatible with Munchkin™ Dungeon Box of Holding

Complete insert kit providing storage for cards and minis



## Construction Tips

- 1) Each piece should be removed from the frames with gentle pressure back and forth. You should not need a knife to cut pieces free.
- 2) Our inserts are designed to be glued together. We use Sobo craft glue, but any glue that is tacky and dries clear will work fine. Tacky glue assists with building as it holds better during construction. You can use painter's/masking tape for some joins, but glue is always best.
- 3) Ensure you cleanup excess glue as you build. This is especially important in card lanes where dividers will be used or in spaces where a tray will be stored.
- 4) Check the build diagrams included in the package for reference, including all parts, as well as build tips specific to this insert.
- 5) Always **dry fit pieces first** to ensure a good fit and to better understand how the kit goes together.
- 6) Allow your finished insert to dry overnight.
- 7) You can optionally sand and even stain your insert.
- 8) Don't hesitate to reach out to us if you have questions!

Visit [go7gaming.com](http://go7gaming.com) for a large selection of storage solutions. Follow us on Twitter: [@go7gaming](https://twitter.com/go7gaming) and Facebook: [go7gaming](https://www.facebook.com/go7gaming)



Made in the USA  
6001 W. Parmer Ln  
Suite 370-119  
Austin, TX 78727

NOT A CHILDREN'S TOY  
**AGE 14+**



# Build Instructions

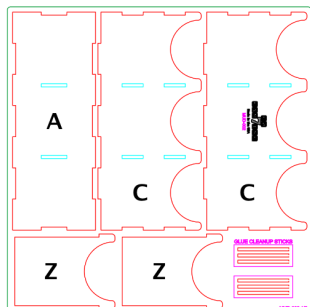


PLATE #1

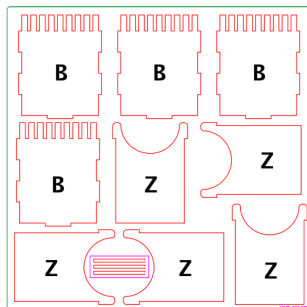


PLATE #2

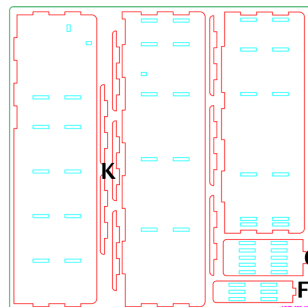


PLATE #4

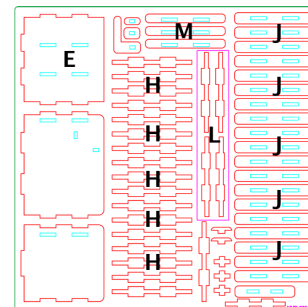


PLATE #5

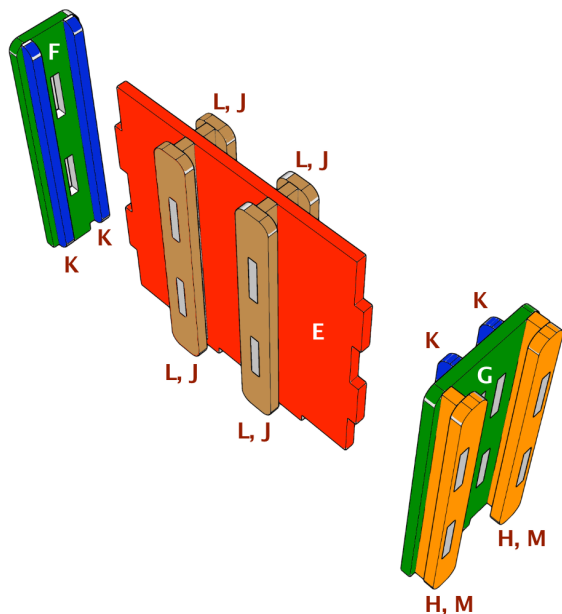
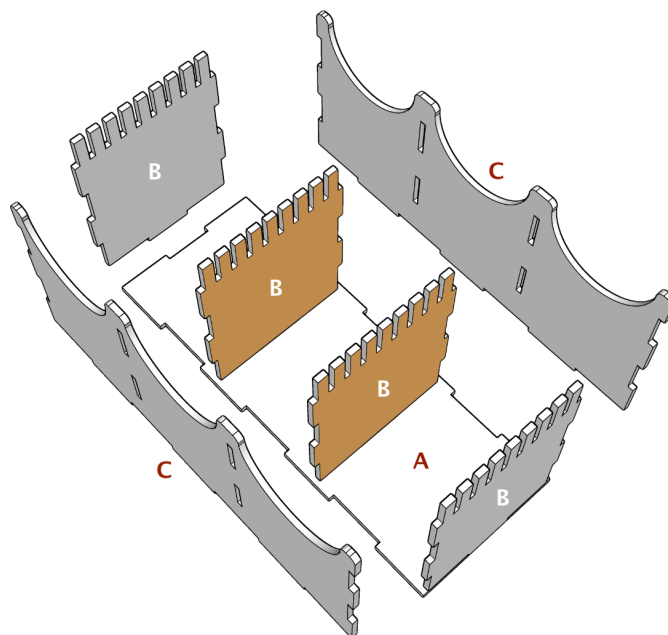
Please reference the diagrams to understand how each component fits together. Also, dry fit the pieces to understand how it goes together and ensure everything is oriented properly before applying glue. Finally, cleanup excess glue to ensure a proper fit and finish, especially in card, rail, and tray storage areas.

## Building the Card Tray

The Card Tray is designed to store the cards.

- 1) Orient base (A) as illustrated.
- 2) Next, apply glue to the bottom and side tabs of inner walls (B, B) and connect to base (A). {brown}
- 3) Next, apply glue to the bottom of long wall (C) and connect. Repeat on the other side.
- 4) Finally, apply glue to the bottom and side tabs of end wall (B) and connect. Repeat on the other side.

Once your tray has had a few minutes to dry, place a couple of dividers (Z) in the tray to ensure a perfect fit while the tray dries.



## Building the Center Mini Stand

The Center Mini Stand, once constructed, will be glued into the Main Insert (next page).

- 1) Orient base (E) as illustrated.
- 2) Next, construct the four supports (L, J) as illustrated. Note the side tabs are shorter on one side of support (L). {brown}
- 2) Next, construct the two short edge supports (H, M) as illustrated. {orange}
- 3) Next, apply glue to the side tabs on simple supports (K, K) {blue} and connect to small end plate (F). {green}
- 4) Next, apply glue to the side tabs on simple supports (K, K) {blue} and connect to large end plate (G). {green}
- 5) Next, apply glue to the side tabs on the four supports (L, J) {brown} and connect to base (E). {red}
- 6) Next, apply glue to the side tabs on the two short edge supports (H, M) {orange} and connect to base (G). {green}
- 7) Next, apply glue to the left side tabs on base (E) {red} and connect to small end plate (F). {green}
- 8) Finally, apply glue to the right side tabs on base (E) {red} and connect to large end plate (G). {green}

# Build Instructions

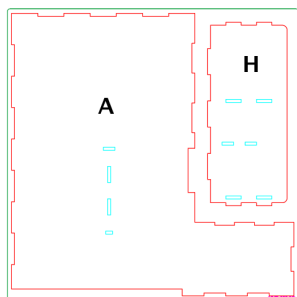


PLATE #3

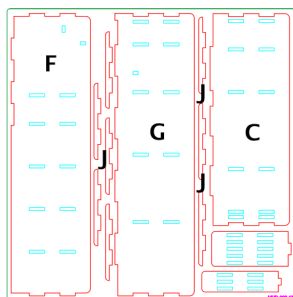


PLATE #4

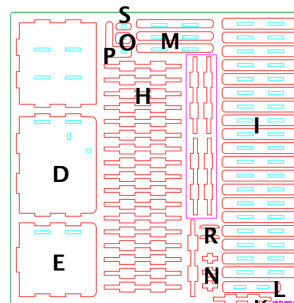
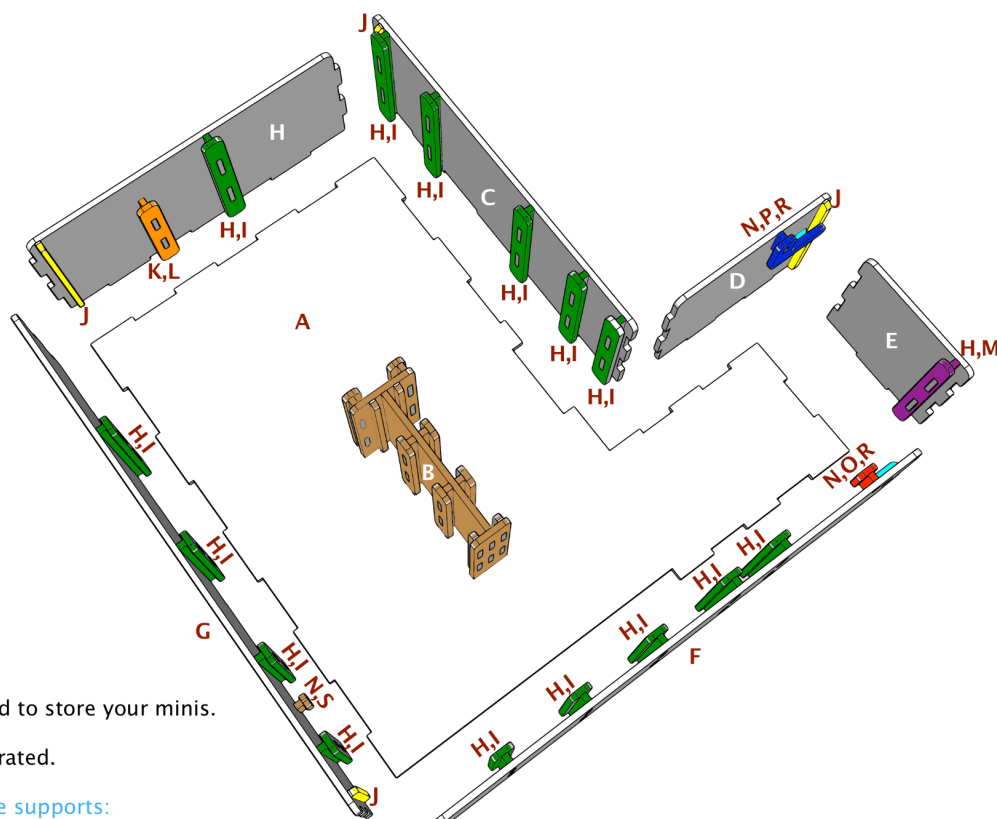


PLATE #5

Please reference the diagrams to understand how each component fits together. Also, dry fit the pieces to understand how it goes together and ensure everything is oriented properly before applying glue. Finally, cleanup excess glue to ensure a proper fit and finish, especially in card, rail, and tray storage areas.



## Building the Main Insert

The Main Insert is designed to store your minis.

1) Orient base (A) as illustrated.

First, you will construct the supports:

- 2) Next, apply glue to the side tab and construct short support (N, O) as illustrated. {red}
- 3) Next, apply glue to the side tab and construct thin support (N, S) as illustrated. {brown}
- 4) Next, apply glue to the side tab and construct "L" support (N, P) as illustrated. {blue}
- 5) Next, apply glue to the side tabs and construct short edge support (H, M) as illustrated. {purple}
- 6) Next, apply glue to the side tabs and construct medium support (K, L) as illustrated. {orange}
- 7) Next, apply glue to the side tabs and construct the 15x full supports (H, I) as illustrated. {green}

Next, you will attach the supports to the walls:

- 8) Next, apply glue to the side tabs of the 4x simple supports (J) and connect to outer walls (H, C, D, G). {yellow}
- 9) Next, apply glue to the side tab and connect short support (N, O) {red} and floor support (R) {cyan} to wall (F).
- 10) Next, apply glue to the side tab and connect thin support (N, S) {brown} to wall (G).
- 11) Next, apply glue to the side tab and connect medium support (K, L) {orange} to wall (H).
- 12) Next, apply glue to the side tab and connect "L" support (N, P) {blue} and floor support (R) {cyan} to wall (D).
- 13) Next, apply glue to the side tab and connect edge support (H, M) {purple} to wall (E).
- 14) Next, apply glue to the side tabs and connect the 15x full supports (H, I) to walls (C, F, G, H).
- 15) Next, apply glue to the bottom and side tabs of wall (H) and connect.
- 16) Next, apply glue to the bottom of wall (C) and connect.
- 17) Next, apply glue to the bottom and side tabs of wall (D) and connect.
- 18) Next, apply glue to the bottom of wall (E) and connect.
- 19) Next, apply glue to the bottom and side tabs of wall (F) and connect.
- 20) Next, apply glue to the bottom of wall (G) and connect.
- 21) Finally, apply glue to the bottom of the Center Mini Stand (B) (previous page) and connect to base (A).

# Storing Your Minis in the Organizer

The suggested layout below is how we store our minis in this organizer. The small minis can be stored in a variety of configurations, but we hope this layout provides you with a starting point.

