

MOM-004 MINI TRAY UPGRADE

Mini tray upgrade kit for our MOM-004 storage solution. Supports the Horrific Journeys expansion.



Construction Tips

- 1) Each piece should be removed from the frames with gentle pressure back and forth. You should not need a knife to cut pieces free.
- 2) Our inserts are designed to be glued together. We use Sobo craft glue, but any glue that is tacky and dries clear will work fine. Tacky glue assists with building as it holds better during construction. You can use painter's/masking tape for some joins, but glue is always best.
- 3) Keep some paper towels handy for cleanup during build.
- 4) Ensure you cleanup excess glue as you build. This is especially important in card lanes where dividers will be used or in spaces where a tray will be stored.
- 5) Check the build diagram included in the package for reference, including all parts, as well as build tips specific to this insert.
- 6) Always dry fit pieces first to ensure a good fit and to better understand how the kit goes together.
- 7) Allow your finished insert to dry overnight.
- 8) You can optionally sand and even stain your insert.
- 9) Don't hesitate to reach out to us if you have questions!

Visit go7gaming.com for a large selection of storage solutions. Follow us on Twitter: [@go7gaming](https://twitter.com/go7gaming) and Facebook: [go7gaming](https://www.facebook.com/go7gaming)

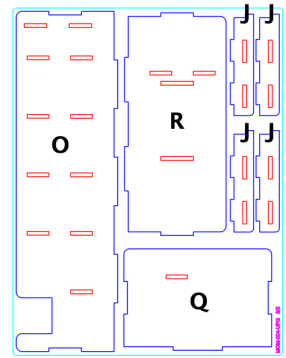
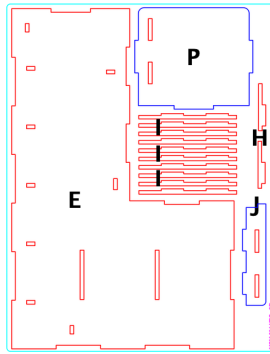
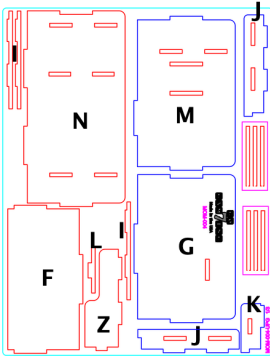


Made in the USA
6001 W. Parmer Ln
Suite 370-119
Austin, TX 78727

NOT A CHILDREN'S TOY
AGE 14+



Build Instructions

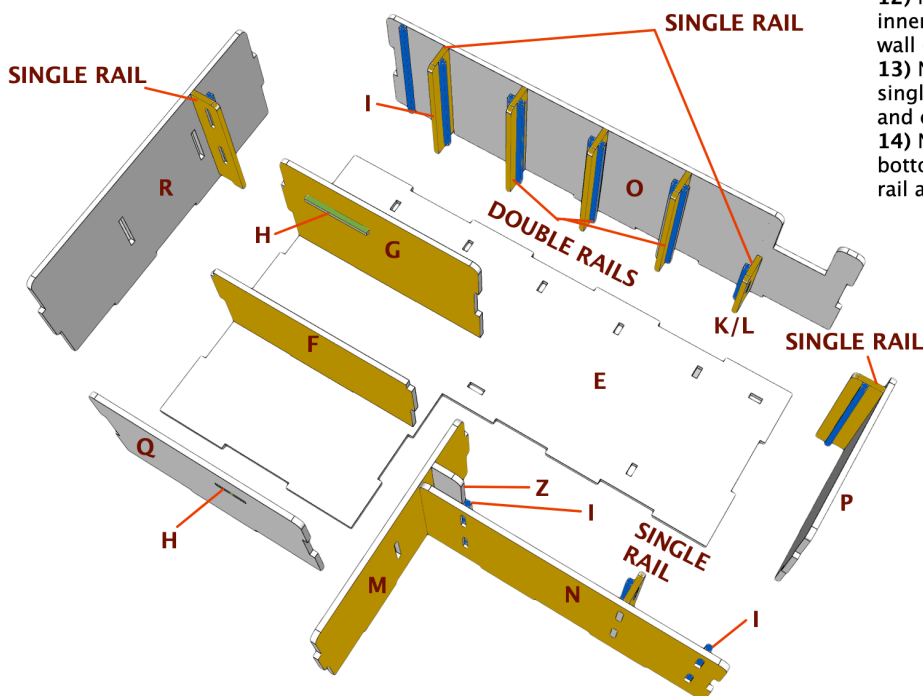


Building the Replacement Minis Tray

The minis tray provides storage for eleven (11) small, two (2) medium, and two (2) large monster minis.

It is essential that you dry fit each wall and the entire tray as you apply glue to ensure that you place the rail assemblies properly with the rails on the proper sides. As noted below, three of the rail assemblies have rails on both sides, but four of the long rail assemblies have a rail only on the one side and the same is true of the short (K/L) rail assembly (five total rail assemblies have a rail on only one side). Rails are highlighted in blue below with text identifying single/double rail assemblies. Cleanup all excess glue when building and attaching rail assemblies or the minis will not slide freely into the rails.

- 1) Place base (E) down on your workspace in the orientation noted. When preparing to connect the rail assemblies later, it is helpful to have all the walls laid out around the base so you can visually compare your decisions to the image below.
- 2) Next, construct the three double-sided rail assemblies by gluing a rail (I) to each side of a rail support (J).
- 3) Next, construct the four tall and one short single-sided rail assemblies by gluing a rail (I/K) to the proper side of rail support (J/L). Dry fit the assembly on the walls to determine the proper side to glue the rail (I) to (rails are colored blue).
- 4) Next, apply glue on the tab of support (H) and connect to tall inner wall (G) and then apply glue to the bottom of tall inner wall (G) and connect to base (E). The Go7 Gaming logo is on the opposite of tall inner wall (G) pictured below.
- 5) Next, apply glue on the bottom of short inner wall (F) and connect.
- 6) Next, apply glue on the tabs of large support (Z) and connect to outer wall (M).
- 7) Next, apply glue on the side tabs of a single rail assembly built in step #3 and two rails (I) and connect to outer wall (N).
- 8) Next, apply glue on the left side tab of outer wall (N) and connect to outer wall (M).
- 9) Next, apply glue to the right side tabs of inner walls (F, G), the bottom tab of the rail assembly connected to outer wall (N), the bottom tab of the support (Z) connected to outer wall (M), and the bottom of the outer walls (M, N) and connect to base (E).
- 10) Next, apply glue to the tab on support (H) and connect to the inside of outer wall (Q) and the place glue on the bottom and side tabs of outer wall (Q) and connect to base (E).
- 11) Next, apply glue to the side tabs on a single-sided rail assembly built in step #3 and connect to outer wall (R).



12) Next, apply glue to the side tabs of inner walls (F, G) and the bottom of outer wall (R) and connect to base (E).

13) Next, apply glue to the side tabs on a single-sided rail assembly built in step #3 and connect to outer wall (P).

14) Next, apply glue to the side tabs and bottom of outer wall (P), the bottom of the rail assembly, and connect to base (E).

15) Next, apply glue to the side tabs of three double rail assemblies built in step #2, a tall single rail assembly built in step #3, a short rail assembly built in step #3, and a rail (I), and connect to outer wall (O).

16) Next, place glue on the bottom of outer wall (O), the bottom tabs on the rail assemblies, and connect to base (E).

Please ensure you check all rail assemblies to ensure you have cleaned up the glue allowing the minis to slide in and out freely.