

# AQR-001 STORAGE SOLUTION

Storage Kit for Arcadia Quest: Riders™

Complete insert kit providing storage for minis, cards, dice, map tiles, and extras



## Construction Tips

- 1) Each piece should be removed from the frames with gentle pressure back and forth. You should not need a knife to cut pieces free.
- 2) Our inserts are designed to be glued together. We use Sobo craft glue, but any glue that is tacky and dries clear will work fine. Tacky glue assists with building as it holds better during construction. You can use painter's/masking tape for some joins, but glue is always best.
- 3) Ensure you cleanup excess glue as you build. This is especially important in card lanes where dividers will be used or in spaces where a tray will be stored.
- 4) Check the build diagrams included in the package for reference, including all parts, as well as build tips specific to this insert.
- 5) Always **dry fit pieces first** to ensure a good fit and to better understand how the kit goes together.
- 6) Allow your finished insert to dry overnight.
- 7) You can optionally sand and even stain your insert.
- 8) Don't hesitate to reach out to us if you have questions!

Visit [go7gaming.com](http://go7gaming.com) for a large selection of storage solutions. Follow us on Twitter: [@go7gaming](https://twitter.com/go7gaming) and Facebook: [go7gaming](https://www.facebook.com/go7gaming)



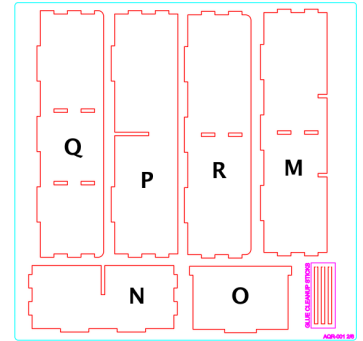
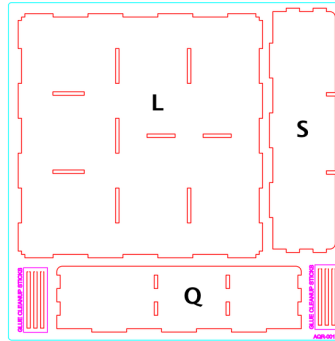
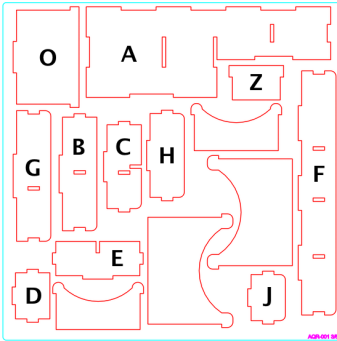
Made in the USA

NOT A CHILDREN'S TOY

**AGE 14+**



# Build Instructions

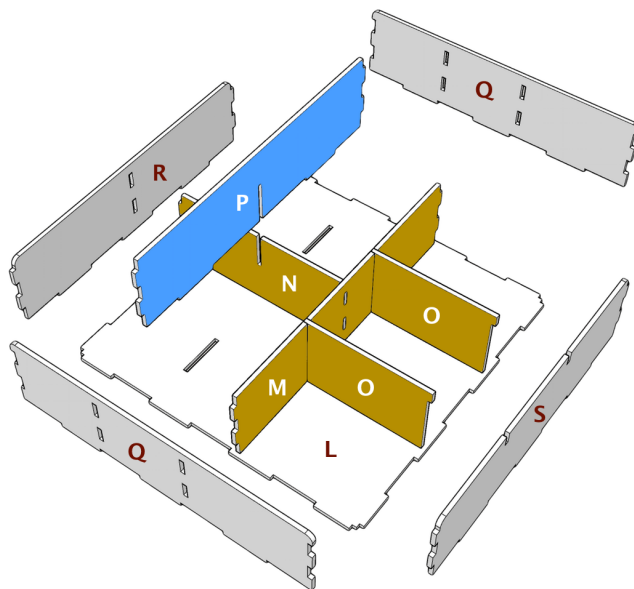
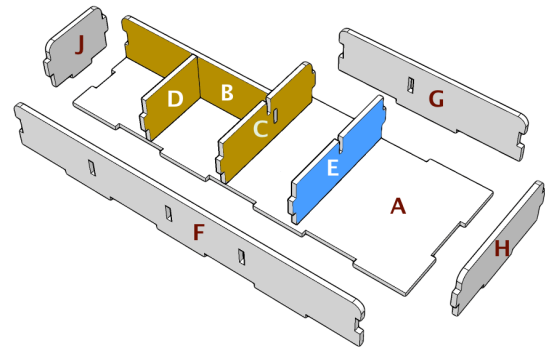


Please reference the diagrams to understand how each component fits together. Also, dry fit the pieces to understand how it goes together and ensure everything is oriented properly before applying glue. Finally, cleanup excess glue to ensure a proper fit and finish, especially in card, rail, and tray storage areas.

## Building the "L" Tray

This tray stores four (4) small minis and also provides a space for Kickstarter exclusive dice.

- 1) Place base (A) down on your workspace in the orientation noted.
- 2) Next, apply glue to the right side tab of wall (B) and connect to wall (C).
- 3) Next, place glue on right side tab of inner wall (D) and connect to the structure you built in step #2.
- 4) Next, place glue on the bottom and all side tabs of the structure you built in step #3 and connect to base (A).
- 5) Next, apply glue to the bottom and side tabs of inner wall (E) and connect to base (A).
- 6) Next, apply glue to the bottom of outer wall (G) and connect.
- 7) Next, apply glue to the bottom of outer wall (F) and connect.
- 8) Next, apply glue to the bottom and side tabs of outer wall (J) and connect.
- 9) Next, apply glue to the bottom and side tabs of outer wall (H) and connect.
- 10) Finally, apply glue to the side tabs of splitter (Z) and connect between wall (C) and inner wall (E) – not pictured.

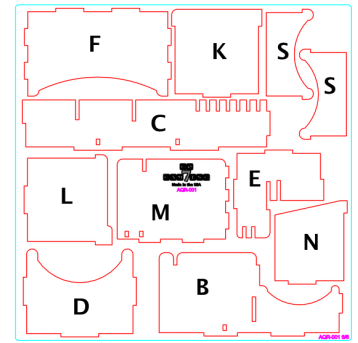
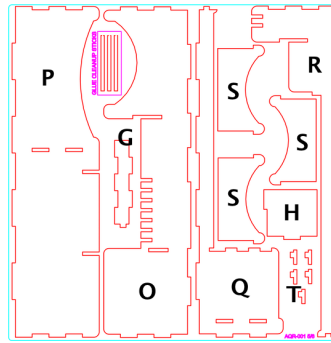
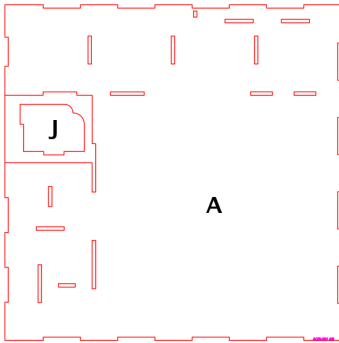


## Building the Minis Tray

This tray provides storage for Malkhor and six (6) riders.

- 1) Place base (L) down on your workspace in the orientation noted.
- 2) Next, apply glue to the right side tabs of inner wall (N) and connect to inner wall (M).
- 3) Next, place glue on the bottom and side tabs of the structure you built in step #2 and connect to base (L).
- 4) Next, apply glue to the side tabs and the bottom of divider (O) and connect to the base. Repeat for the second divider (O).
- 5) Next, place glue on the bottom and side tabs of inner wall (P) and connect to base (A).
- 6) Next, apply glue to the bottom of outer wall (Q) and connect. Repeat on the other side.
- 7) Next, place glue on the bottom and end tabs of outer wall (S) and connect.
- 8) Finally, place glue on the bottom and side tabs of outer wall (R) and connect.

# Build Instructions

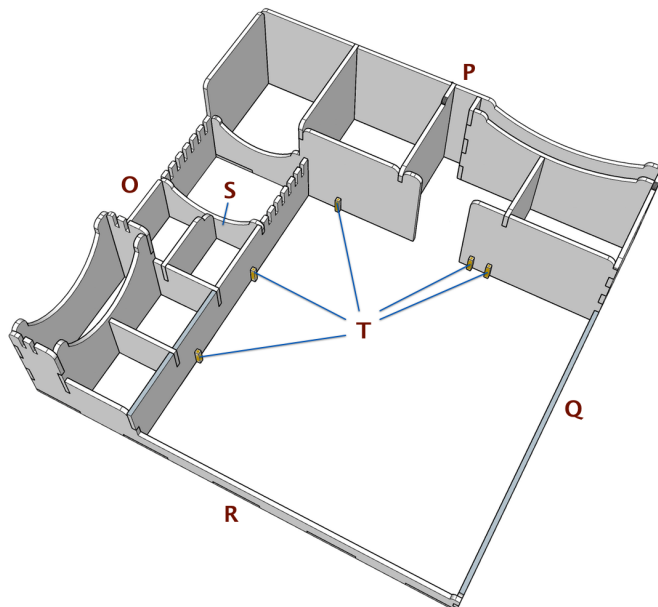
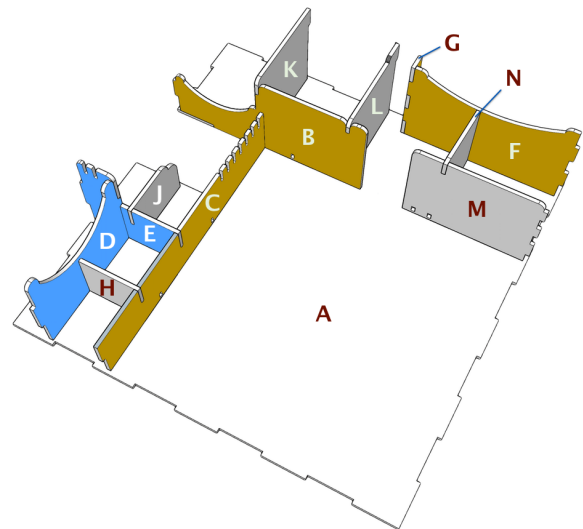


Please reference the diagrams to understand how each component fits together. Also, dry fit the pieces to understand how it goes together and ensure everything is oriented properly before applying glue. Finally, cleanup excess glue to ensure a proper fit and finish, especially in card, rail, and tray storage areas.

## Building the Base Insert

The base insert is designed to store your map tiles, four (4) small minis, four (4) riders, cards, campaign pad, and dashboards.

- 1) Place base (A) down on your workspace in the orientation noted.
- 2) Next, apply glue to the right side tab of inner wall (C), connect to inner wall (B), and then place glue on the bottom of the structure and connect to base (A).
- 3) Next, apply glue to the right side tab of inner divider wall (D), connect to inner wall (E), place glue on the right side tab of inner wall (E), and then place glue on the bottom of the structure and connect to base (A).
- 4) Next, apply glue to the left side tabs of card wall (F), connect to inner wall (G), place glue on the bottom of the structure, and connect to base (A).
- 5) Next, place glue on the bottom of inner wall (M) and connect.
- 6) Next place glue on the bottom and side tabs of divider walls (H, J, K, L, N) and connect to the structure.



## Building the Base Insert (cont'd)

- 7) Next, apply glue to the bottom of outer wall (O) where it touches base (A) and the side tabs of other pieces that touch it and connect.
- 8) Next, apply glue to the bottom of outer wall (Q) and the side tabs of other pieces that touch it and connect.
- 9) Next, apply glue to the bottom and side tabs of outer wall (P) and the side tabs of other pieces that touch it and connect.
- 10) Next, apply glue to the bottom and side tabs of outer wall (R) and the side tabs of other pieces that touch it and connect.
- 11) Next, apply glue to the side tabs and bottom of divider (S) and connect. You can place the other dividers (without glue) once the insert dries.
- 12) Finally, place glue on the side tab of each of the five (5) supports (T) and attach them to the insert.

**Congratulations!** You have completed the construction of your new storage solution.