

ZGH-004 STORAGE SOLUTION

Storage Kit for Zombicide: Green Horde™ Friend & Foes Box
Complete insert kit providing storage for tiles, minis, & ID cards



Construction Tips

- 1) Each piece should be removed from the frames with gentle pressure back and forth. You should not need a knife to cut pieces free.
- 2) Our inserts are designed to be glued together. We use Sobo craft glue, but any glue that is tacky and dries clear will work fine. Tacky glue assists with building as it holds better during construction. You can use painter's/masking tape for some joins, but glue is always best.
- 3) Ensure you cleanup excess glue as you build. This is especially important in card lanes where dividers will be used or in spaces where a tray will be stored.
- 4) Check the build diagrams included in the package for reference, including all parts, as well as build tips specific to this insert.
- 5) **Always dry fit pieces first** to ensure a good fit and to better understand how the kit goes together.
- 6) Allow your finished insert to dry overnight.
- 7) You can optionally sand and even stain your insert.
- 8) Don't hesitate to reach out to us if you have questions!

Visit go7gaming.com for a large selection of storage solutions. Follow us on Twitter: [@go7gaming](https://twitter.com/go7gaming) and Facebook: [go7gaming](https://www.facebook.com/go7gaming)



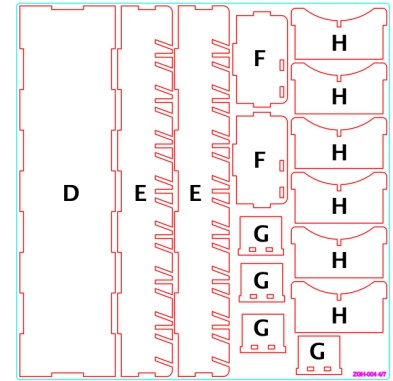
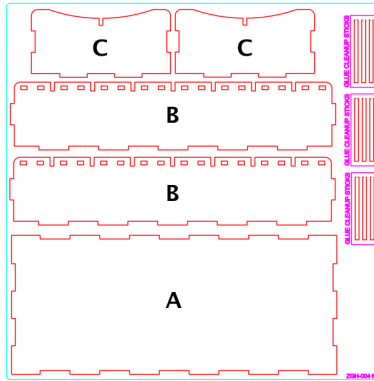
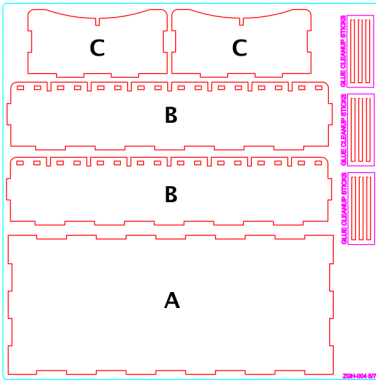
Made in the USA

NOT A CHILDREN'S TOY

AGE 14+



Build Instructions



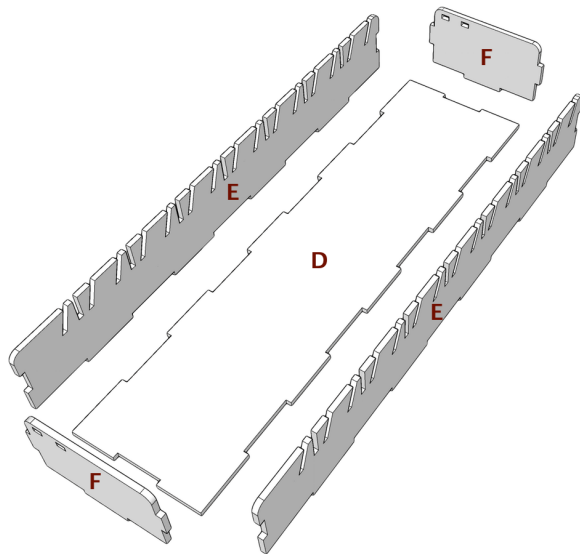
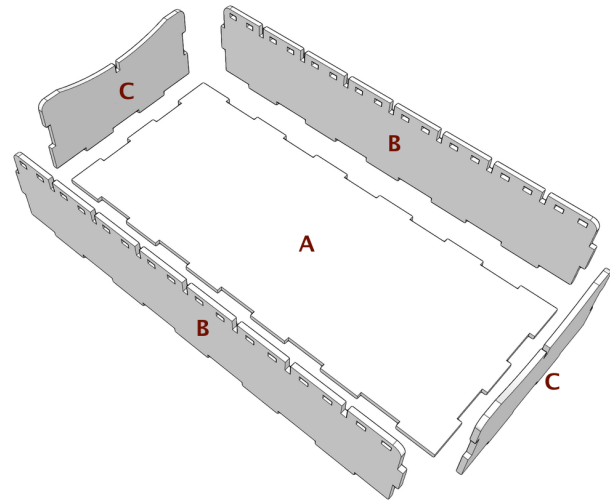
Please reference the diagrams to understand how each component fits together. Also, dry fit the pieces to understand how it goes together and ensure everything is oriented properly before applying glue. Finally, cleanup excess glue to ensure a proper fit and finish, especially in card, rail, and tray storage areas.

Building the Large Storage Trays

These two trays are designed to store groups of minis as well as single minis using the small dividers. These trays allow for name tabs, as needed.

- 1) Place base (A) down on your workspace in the orientation noted.
- 2) Next, apply glue to the bottom of long outer wall (B) and connect to base (A).
- 3) Next, place glue on the bottom and side tabs of outer wall (C) and connect. Repeat on the other side.
- 4) Finally, apply glue to the bottom of long outer wall (B) and connect.
- 5) Once your tray has had a few minutes to dry, place a few of the large dividers (not shown) in the tray. This will ensure a perfect fit once dry.
- 6) Repeat the steps above to build the second tray.

This kit also offers splitters for this tray (not shown) allowing for the storage of few individual minis.



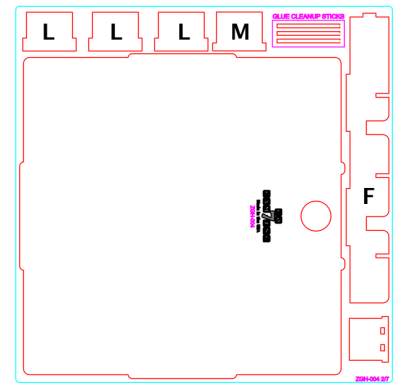
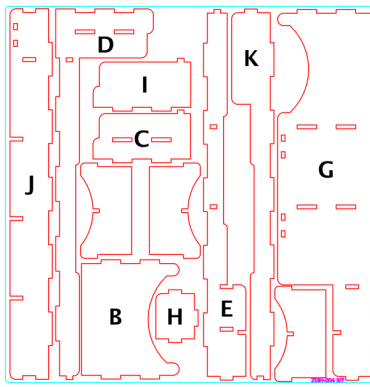
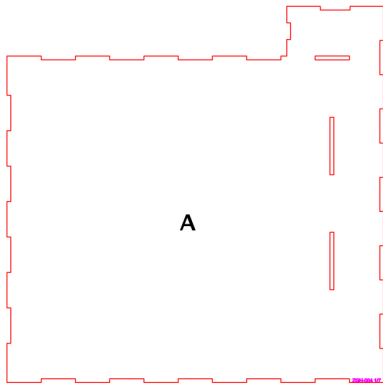
Building the Small Card Tray

The small tray stores additional small cards. This tray can also be used to store minis and other items. If you do not sleeve your cards, you will not need this tray for card storage.

- 1) Place base (D) down on your workspace in the orientation noted.
- 2) Next, apply glue to the bottom of long outer wall (E) and connect to base (D).
- 3) Next, place glue on the bottom and side tabs of outer wall (F) and connect. Repeat on the other side.
- 4) Finally, apply glue to the bottom of long outer wall (E) and connect.

5) Once your tray has had a few minutes to dry, place a few of the dividers (H) in the tray. This will ensure a perfect fit once dry. The splitters (G) allow for storage of small minis in this tray.

Build Instructions

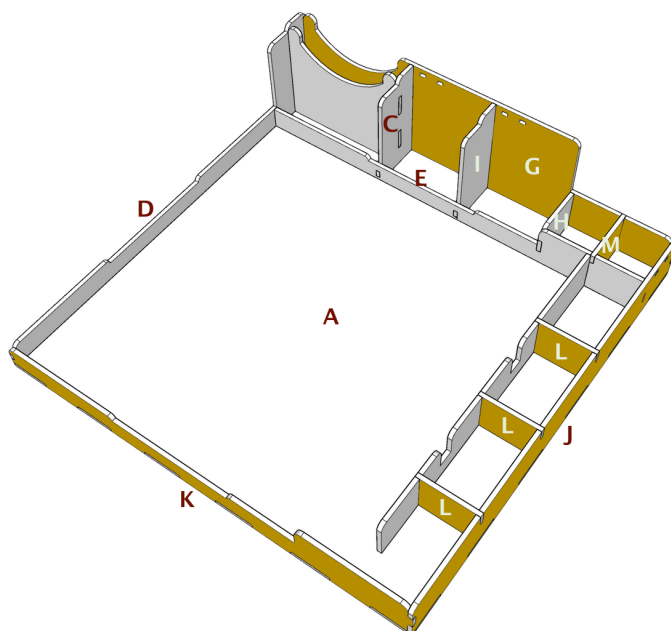
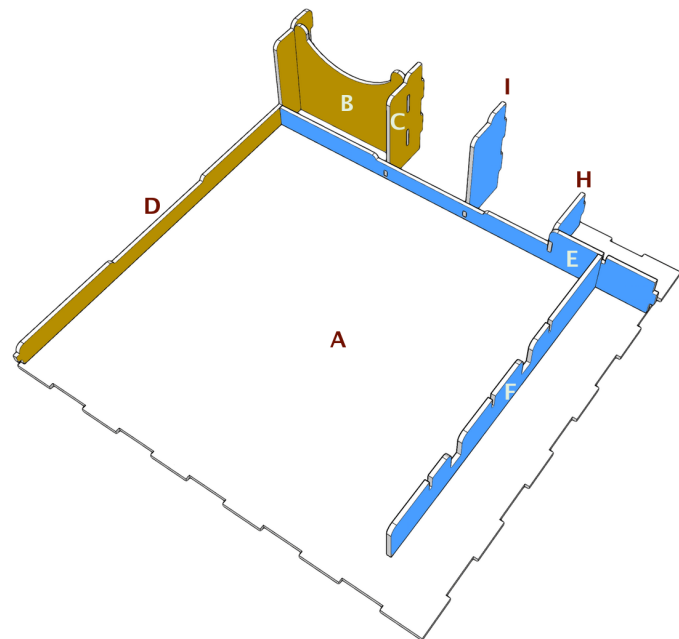


Please reference the diagrams to understand how each component fits together. Also, dry fit the pieces to understand how it goes together and ensure everything is oriented properly before applying glue. Finally, cleanup excess glue to ensure a proper fit and finish, especially in card, rail, and tray storage areas.

Building the Base Insert

The base insert is designed to store your map tiles, ID cards, and minis.

- 1) Place base (A) down on your workspace in the orientation noted.
- 2) Next, apply glue to the side tabs of divider wall (B) and connect to outer wall (D) and inner wall (C).
- 3) Next, apply glue to the left side tab of small outer wall (H) and connect to wall (E).
- 4) Next, apply glue to the right side tab of inner wall (F) and connect to the structure you built in step #3.
- 5) Next, apply glue to the left side tab of inner wall (I) and connect to the structure you built in step #4.
- 6) Next, apply glue to the left side tab of the structure you created in step #4 (E-F-H-I) and connect to the other structure (B-C-D, blue and brown).
- 7) Next, apply glue to the bottom of the structure (B-C-D-E-F-H-I) and connect to base (A).



Building the Base Insert (cont'd)

- 8) Next, apply glue to the side tabs of inner wall (C), small outer wall (H), the side tabs of inner wall (I), the side tabs of outer wall (G) and connect. You will also want to apply some glue to the bottom of outer wall (G) near the area where it touches base (A).
- 9) Next, apply glue to the bottom of outer wall (J) and connect.
- 10) Next, apply glue to the side tabs and bottom of outer wall (K) and connect.
- 11) Next, apply glue to the side tabs of inner dividers (L) and connect. Repeat for the other two inner dividers (L).
- 12) Finally, apply glue to the side tabs of inner divider (M) and connect.
- 13) Once you have decided how to use the various trays for storage, you can glue the name tabs into each trays.

Congratulations! You have completed the construction of your new storage solution.