

CLANS-001 STORAGE SOLUTION

Storage Kit for Clans of Caledonia™ Base Game Box

Complete insert kit providing storage for tiles, tokens, and game board + 4 custom player storage trays



Construction Tips

- 1) Each piece should be removed from the frames with gentle pressure back and forth. You should not need a knife to cut pieces free.
- 2) Our inserts are designed to be glued together. We use Sobo craft glue, but any glue that is tacky and dries clear will work fine. Tacky glue assists with building as it holds better during construction. You can use painter's/masking tape for some joins, but glue is always best.
- 3) **Carefully** remove the **paper covering the acrylic overlays**, once your player trays have dried overnight.
- 4) Ensure you cleanup excess glue as you build. This is especially important in card lanes where dividers will be used or in spaces where a tray will be stored.
- 5) Check the build diagrams included in the package for reference, including all parts, as well as build tips specific to this insert.
- 6) **Always dry fit pieces first** to ensure a good fit and to better understand how the kit goes together.
- 7) Allow your finished insert to dry overnight.
- 8) You can optionally sand and even stain your insert.
- 9) Don't hesitate to reach out to us if you have questions!

Visit go7gaming.com for a large selection of storage solutions. Follow us on Twitter: [@go7gaming](https://twitter.com/go7gaming) and Facebook: [go7gaming](https://www.facebook.com/go7gaming)



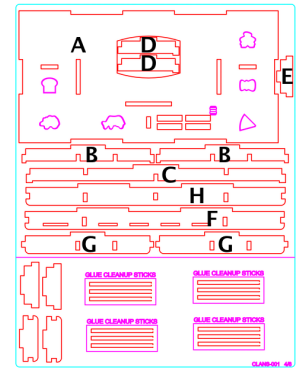
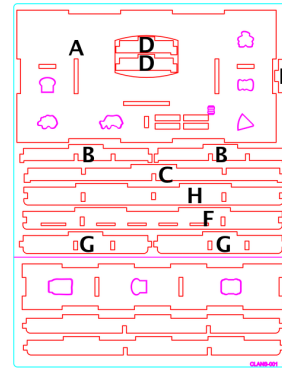
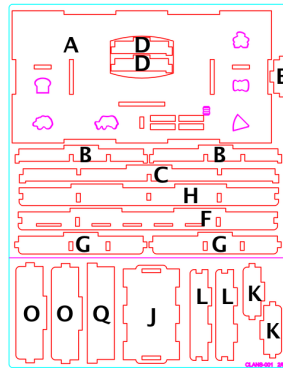
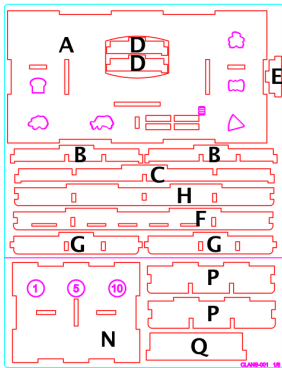
Made in the USA

NOT A CHILDREN'S TOY

AGE 14+



Build Instructions

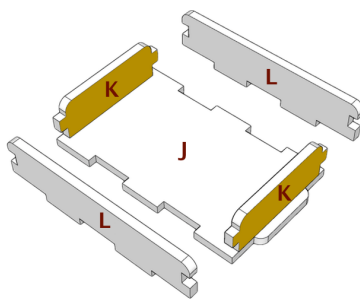
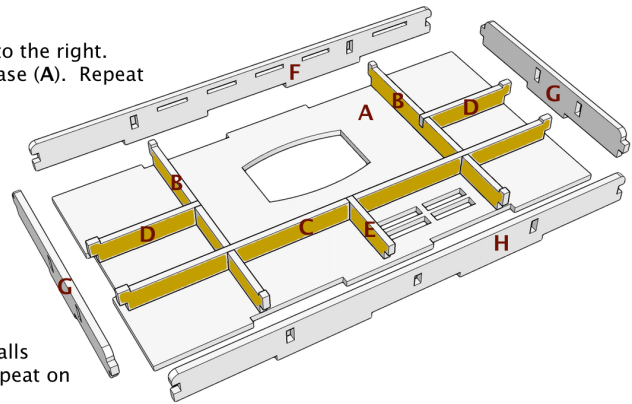


Please reference the diagrams to understand how each component fits together. Also, dry fit the pieces to understand how it goes together and ensure everything is oriented properly before applying glue. Finally, cleanup excess glue to ensure a proper fit and finish, especially in card, rail, and tray storage areas.

Building the Player Trays

These four trays are designed to store player bits and to be used during play with the acrylic overlays provided in this kit.

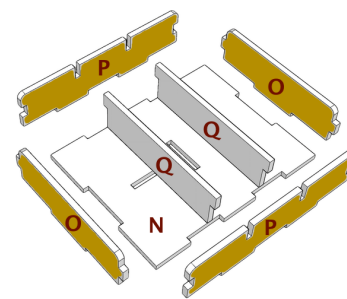
- 1) Place base (A) down on your workspace in the orientation noted to the right.
- 2) Next, apply glue to the bottom of inner wall (B) and connect to base (A). Repeat on the other side.
- 3) Next, apply glue to the bottom of long inner wall (C) and connect to base (A).
- 4) Next, place glue on the bottom and inner side tab of inner wall (D) and connect. Repeat on the other side.
- 5) Next, place glue on the bottom and upper side tab of short inner wall (E) and connect.
- 6) Next, place glue on the upper and lower side tabs of inner walls (B) and the bottom of outer wall (F) and connect.
- 7) Next, apply glue to the lower side tab of short inner wall (E) and the bottom of outer wall (H) and connect.
- 8) Finally, place glue on the side tabs of long inner wall (C), inner walls (D), and the bottom and side tabs of outer wall (G) and connect. Repeat on the other side.
- 9) Once the glue on your tray has had five minutes to set, place a player board in the tray and then place the acrylic overlay on top of that to allow the tray to totally dry and provide a perfect fit. You should leave the paper on the acrylic overlay until the tray has fully dried.



Building the Small Bits Tray

This small tray stores inside the main tray and holds two dice, starting tiles, and price markers. It is stored on top of the clan tiles.

- 1) Place base (J) down on your workspace in the orientation noted above.
- 2) Next, apply glue to the bottom and side tabs of outer wall (K) and connect to base (J). Repeat on the other side.
- 3) Finally, apply glue to the bottom of outer wall (L) and connect. Repeat on the other side.

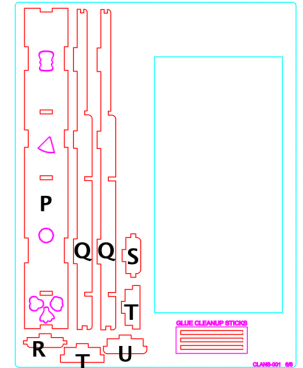
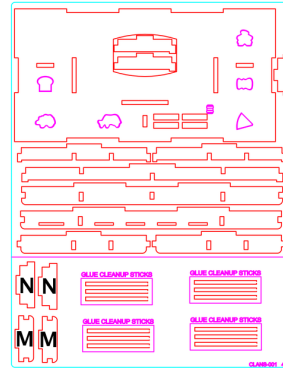
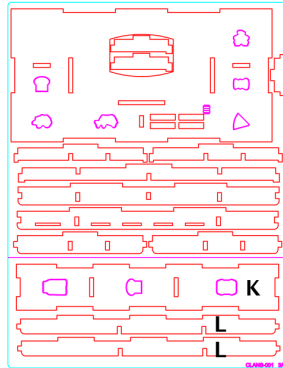
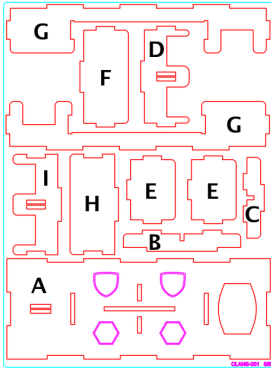


Building the Coin Tray

The coin tray stores inside the main tray and holds either the metal coins or the cardboard coins for the game.

- 1) Place base (N) down on your workspace in the orientation noted above.
- 2) Next, apply glue to the bottom of outer wall (P) and connect to base (N).
- 3) Next, apply glue to the bottom and side tabs of end wall (O) and connect. Repeat on the other side.
- 4) Next, apply glue to the bottom of outer wall (P) and connect.
- 5) Finally, apply glue to the side tabs of the inner dividers (Q) and connect.

Build Instructions

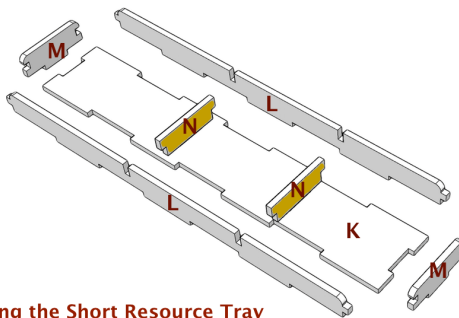
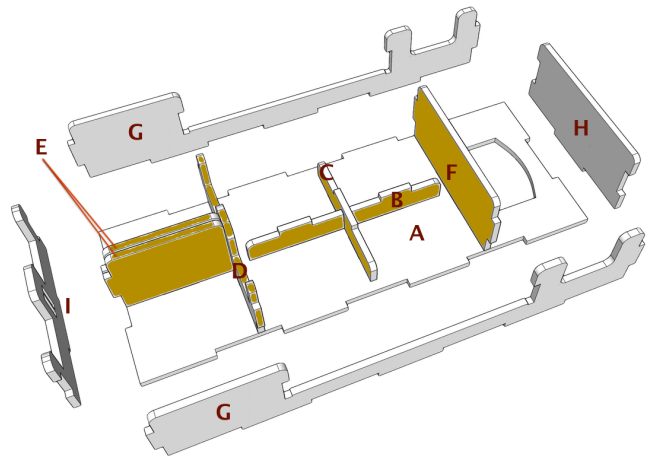


Please reference the diagrams to understand how each component fits together. Also, dry fit the pieces to understand how it goes together and ensure everything is oriented properly before applying glue. Finally, cleanup excess glue to ensure a proper fit and finish, especially in card, rail, and tray storage areas.

Building the Main Tray

The main tray provides storage for export contract, port bonus, scoring, and clans tiles. This tray also provides a home for the coin tray and the small bits tray.

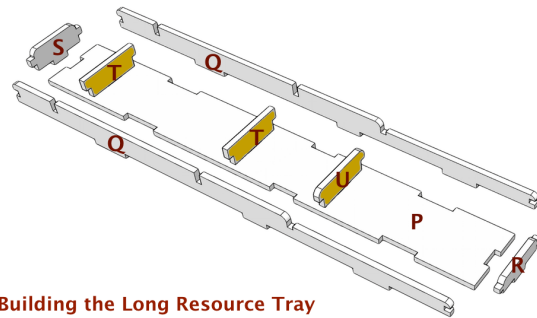
- 1) Place base (A) down on your workspace in the orientation noted to the right.
- 2) Next, apply glue to the bottom of inner divider (B) and connect to base (A). Do the same for inner divider (C).
- 3) Next, apply glue to the bottom of inner wall (F) and connect.
- 4) Next, place glue on the right side tabs of both inner walls (E) and connect to inner wall (D).
- 5) Next, place glue on the bottom of the structure you built in step #4 and connect to base (A).
- 6) Next, place glue on the side tabs of inner walls (D, F) and the bottom of outer wall (G) and connect. Repeat on the other side.
- 7) Next, apply glue to the bottom and side tabs of end wall (H) and connect.
- 8) Finally, place glue on the side tabs of both inner walls (E, E) and the bottom and side tabs of end wall (I) and connect.



Building the Short Resource Tray

This small tray stores milk, bread, and whiskey resources and is used during play.

- 1) Place base (K) down on your workspace in the orientation noted above.
- 2) Next, apply glue to the bottom and side tabs of both inner dividers (N) and connect to base (A).
- 3) Next, apply glue to the bottom of long wall (L) and connect to base (K).
- 4) Next, apply glue to the bottom and side tabs of end wall (M) and connect. Repeat on the other side.
- 5) Finally, apply glue to the bottom of long wall (L) and connect.



Building the Long Resource Tray

This small tray stores wool, cheese, and grain resources and is used during play. The smaller compartment is used to store the cotton, tobacco, and sugar cane tokens.

- 1) Place base (P) down on your workspace in the orientation noted above.
- 2) Next, apply glue to the bottom and side tabs of both inner dividers (T) and connect to base (A).
- 3) Next, apply glue to the bottom and side tabs of inner divider (U) and connect.
- 4) Next, apply glue to the bottom of long wall (Q) and connect to base (P).
- 5) Next, apply glue to the bottom and side tabs of end wall (S) and connect. Repeat on the other side with short end wall (R).
- 6) Finally, apply glue to the bottom of long wall (Q) and connect.

Congratulations! You have completed the construction of your new storage insert. If you have any questions/concerns, don't hesitate to contact us. Finally, please take a moment to review your new solution on our website.

Storing Your Trays in the Box

Note: once your player trays have had a day to dry, you can remove the paper from the acrylic overlays and put them back on top of the player trays.

Step One:

Place your resource trays (A, B) in the box as noted on the right and place your game boards (C) (longest first) in the empty space inside the "L" created by the resource trays.

The game tiles actually provide a support for the trays we will place next.

Note that resources must sit below the level of the tray walls for proper storage of trays in the game box.



Step Two:

Next, place your main tray (D) in the box as depicted in the image.

Also, place the score pad spacer (E) as illustrated. This spacer provides additional support as the game boards are not quite thick enough to properly support the player trays.



Step Three:

Finally, place your player trays (F) in the box stacked two high on top of each other as shown.

You can also place your game rules on top of all the trays and place the lid on the box.

