

# RB-004 STORAGE SOLUTION

Miniatures Insert Kit for Rum & Bones: Hammers of Ragnarok™ Box  
Complete insert kit providing storage for miniatures, cards, ship boards, and tokens



## Construction Tips

- 1) Each piece should be removed from the frames with gentle pressure back and forth. You should not need a knife to cut pieces free.
- 2) Our inserts are designed to be glued together. We use Sobo craft glue, but any glue that is tacky and dries clear will work fine. Tacky glue assists with building as it holds better during construction. You can use painter's/masking tape for some joins, but glue is always best.
- 3) Keep some paper towels handy for cleanup during build.
- 4) Ensure you cleanup excess glue as you build. This is especially important in card lanes where dividers will be used or in spaces where a tray will be stored.
- 5) Check the build diagram included in the package for reference, including all parts, as well as build tips specific to this insert.
- 6) Always dry fit pieces first to ensure a good fit and to better understand how the kit goes together.
- 7) Allow your finished insert to dry overnight.
- 8) You can optionally sand and even stain your insert.
- 9) Don't hesitate to reach out to us if you have questions!

Visit [go7gaming.com](http://go7gaming.com) for a large selection of storage solutions. Follow us on Twitter: [@go7gaming](https://twitter.com/go7gaming) and Facebook: [go7gaming](https://facebook.com/go7gaming)



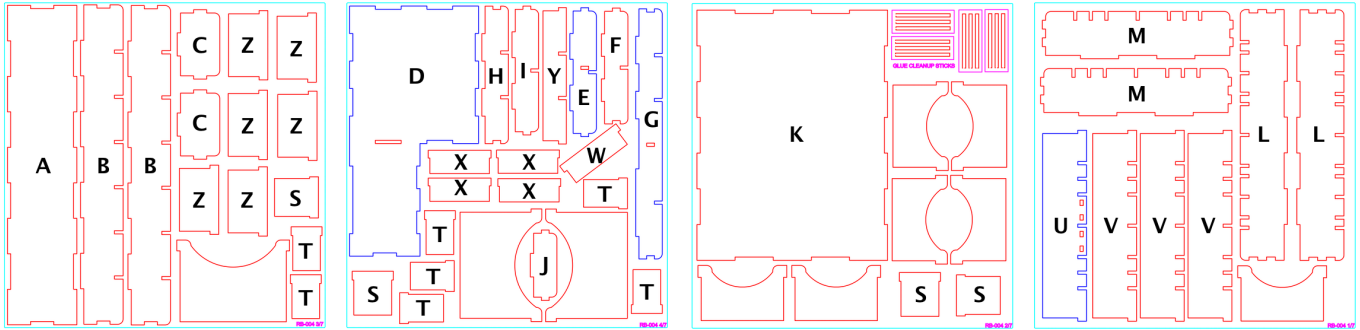
Made in the USA

NOT A CHILDREN'S TOY

AGE 14+



# Build Instructions

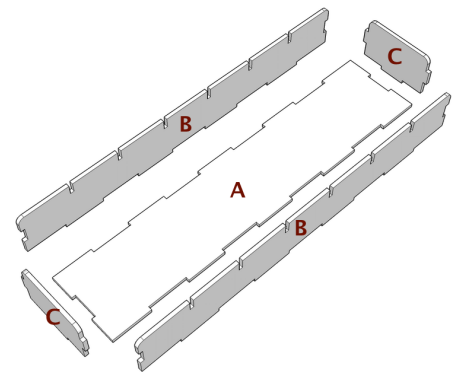


Please reference the diagrams to understand how each component fits together. Also, dry fit the pieces to understand how it goes together and ensure everything is oriented properly before applying glue. Finally, cleanup excess glue to ensure a proper fit and finish, especially in card, rail, and tray storage areas.

## Building the Long Minis Tray

The long hero minis tray provides storage for six large hero minis or other minis.

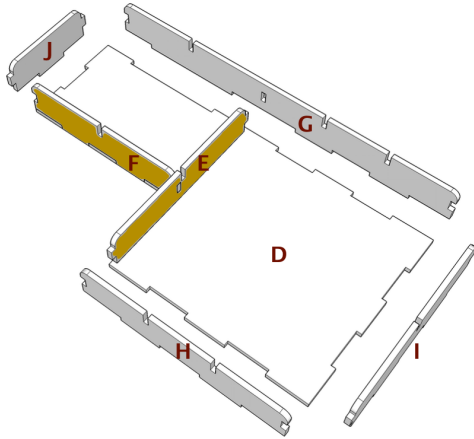
- 1) Place base (A) down on your workspace in the orientation noted to the right.
- 2) Next, apply glue to the bottom of long wall (B) and connect to base (A).
- 3) Next, apply glue to the side tabs and bottom of end wall (C) and connect. Repeat for the other end wall (C).
- 4) Finally, apply glue to the bottom of long wall (B) and connect.
- 5) Once you determine what you want to store in the tray, you can glue your dividers (Z) into the tray.



## Building the "L" Tray

The "L" tray is designed to store tokens and dice.

- 1) Place base (D) down on your workspace in the orientation noted to the left.
- 2) Next, apply glue to the right side tab of outer wall (F) and connect to inner long wall (E).
- 3) Next, place glue on the bottom and side tabs of the structure you built in step #2 and connect to base (D).
- 4) Next, apply glue to the bottom and side tabs of end wall (J) and connect to base (D).
- 5) Next, place glue on the bottom of long wall (G) and connect.
- 6) Next, place glue on the side tabs and bottom of outer wall (I) and connect.
- 7) Finally, place glue on the bottom and side tabs of outer wall (H) and connect.
- 8) Once you determine what you want to store in the tray, you can glue inner divider wall (Y) and dividers (X, W) into the tray.

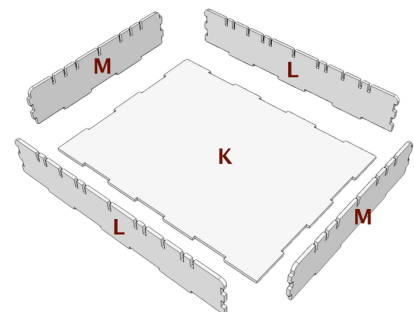


## Building the Large Minis Tray

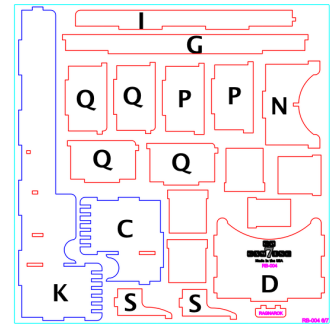
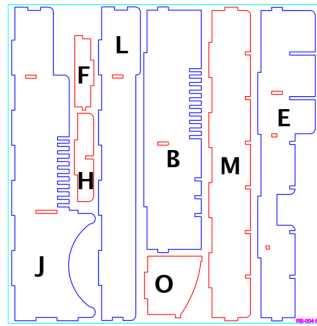
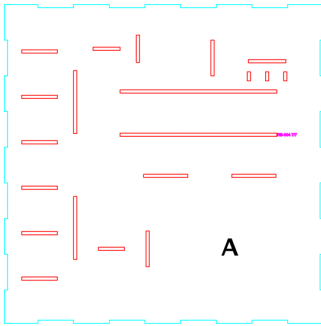
This tray is used to store various small expansion box minis and bosuns/ deckhands.

- 1) Place base (K) down on your workspace in the orientation noted to the right.
- 2) Next, apply glue to the bottom of side wall (L) and connect.
- 3) Next, place glue on the bottom and side tabs of end wall (M) and connect.
- 4) Next, apply glue to the bottom of side wall (L) and connect.
- 5) Finally, place glue on the bottom and side tabs of end wall (M) and connect.

Once your tray has had a few minutes to dry, you can place a few divider walls (U, V) in the tray. You can glue the dividers and splitters later.



# Build Instructions

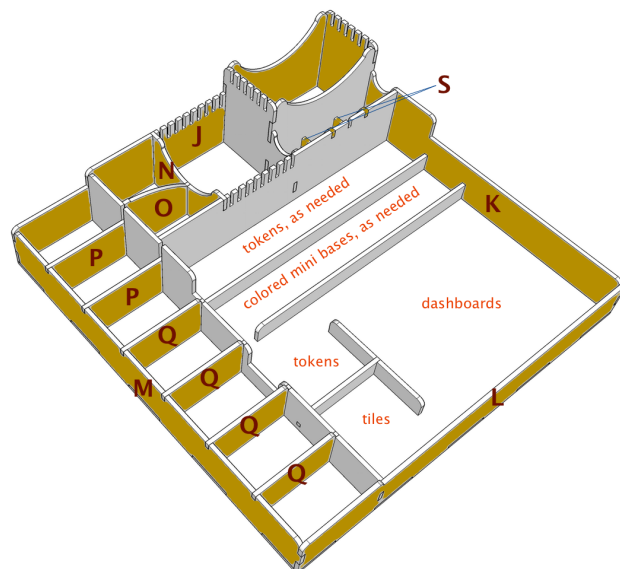
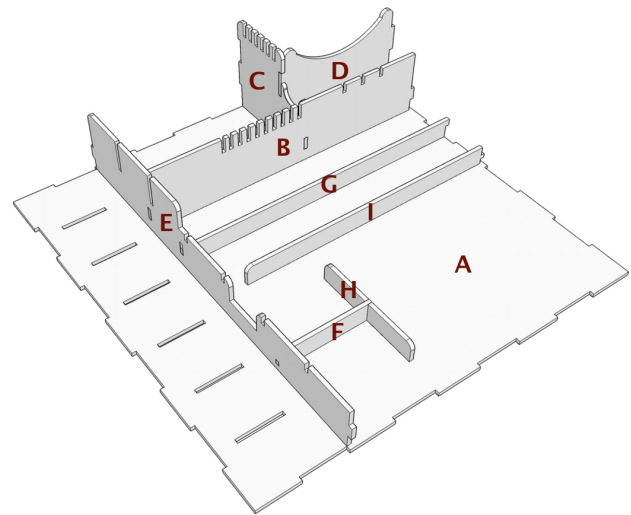


Please reference the diagrams to understand how each component fits together. Also, dry fit the pieces to understand how it goes together and ensure everything is oriented properly before applying glue. Finally, cleanup excess glue to ensure a proper fit and finish, especially in card, rail, and tray areas.

## Building the Base Insert

The base insert is designed to store the small ship boards, large/small minis, dashboards, small/large cards, various small tiles, and larger tokens. The expansion sheet will fit on top of the insert/trays.

- 1) Place base (A) down on your workspace in the orientation noted to the right.
- 2) Next, place glue on the left side tab of card wall (D), connect to divider wall (C), and then attach these two pieces to inner wall (B).
- 3) Next, place glue on the bottom of short wall (I) and connect to base (A).
- 4) Next, place glue on the bottom of tee wall (H) and connect to base (A).
- 5) Next, place glue on the left side tab of short wall (F) and connect to inner wall (E).
- 6) Next, place glue on the left end tab of medium wall (G) and connect to inner wall (E).
- 7) Next, place glue on the left side tab of the tall wall (B) structure you built in step #2 and connect to inner wall (E).
- 8) Next, place glue on the bottom tabs of the inner wall (E) structure and the right side tab of short wall (F) and connect to base (A).



## Building the Base Insert (continued)

- 9) Next, place glue on the bottom of outer wall (J), and the side tabs of inner wall (E) and divider wall (C) and connect.
- 10) Next, place glue on the bottom and side tabs of outer wall (K) and the right side tabs of card wall (D), inner wall (B), medium wall (G), and short wall (I) and then connect.
- 11) Next, place glue on the bottom of outer wall (L) and the side tab of inner wall (E) and connect.
- 12) Next, place glue on bottom and side tabs of outer wall (M) and connect. Ensure you orient the wall correctly.
- 13) Next, place glue on the side tabs and bottom of the two large dividers (P) and connect.
- 14) Next, place glue on the side tabs and bottom of the four large dividers (Q) and connect.
- 15) Next, place glue on the bottom and side tabs of small divider wall (N) and connect.
- 16) Next, place glue on the bottom and end of splitter wall (O) and connect.
- 17) Gluing your splitters (S) is optional and should only be done once your insert glue has dried and you have determined how you want to store everything.

Congratulations! You have completed the construction of your new storage insert. If you have any questions/concerns, don't hesitate to contact us. Finally, please take a moment to review your new solution on our website.