

MD-006 STORAGE SOLUTION

Miniatures Insert Kit for Massive Darkness™ Reptisaurians Box



FOR USE WITH REPTISAURIANS ADD-ON BOX

Construction Tips

- 1) Each piece should be removed from the frames with gentle pressure back and forth. You should not need a knife to cut pieces free.
- 2) Our inserts are designed to be glued together. We use Sobo craft glue, but any glue that is tacky and dries clear will work fine. Tacky glue assists with building as it holds better during construction. You can use painter's/masking tape for some joins, but glue is always best.
- 3) Keep some paper towels handy for cleanup during build.
- 4) Ensure you cleanup excess glue as you build. This is especially important in card lanes where dividers will be used or in spaces where a tray will be stored.
- 5) Check the build diagram included in the package for reference, including all parts, as well as build tips specific to this insert.
- 6) Always dry fit pieces first to ensure a good fit and to better understand how the kit goes together.
- 7) Allow your finished insert to dry overnight.
- 8) You can optionally sand and even stain your insert.
- 9) Don't hesitate to reach out to us if you have questions!

Visit go7gaming.com for a large selection of storage solutions. Follow us on Twitter: [@go7gaming](https://twitter.com/go7gaming) and Facebook: [go7gaming](https://facebook.com/go7gaming)

Build Instructions

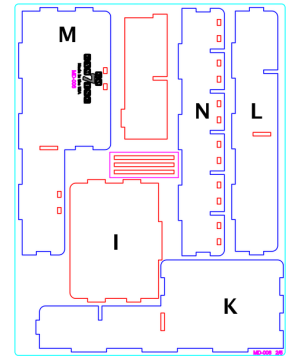
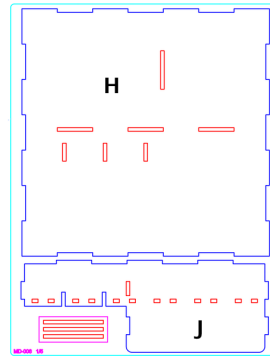
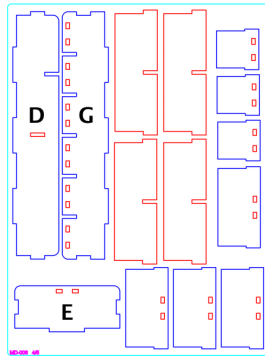
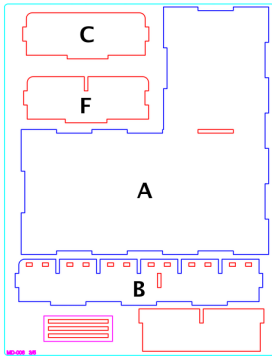


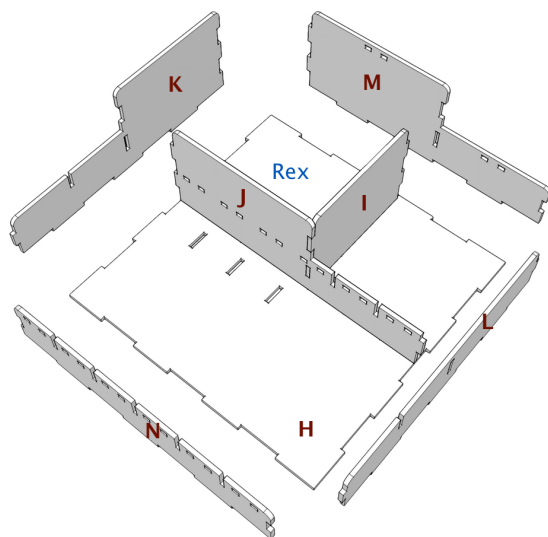
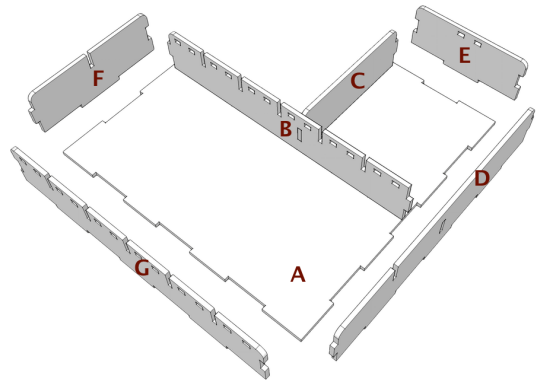
Plate 5/5 not pictured

Please reference the diagrams to understand how each component fits together. Also, dry fit the pieces to understand how it goes together and ensure everything is oriented properly before applying glue. Finally, cleanup excess glue to ensure a proper fit and finish, especially in card areas.

Building the Minis Tray

This tray provide single and shared mini storage.

- 1) Lay base (A) down on your workspace as noted on the right.
- 2) Next, place glue on the left side tab of short outer wall (C) and connect to long wall (B). Ensure the short outer wall (C) is oriented properly.
- 3) Next, place glue on the bottom of the structure (B, C) you built in step 2 and connect to base (A).
- 4) Next, place glue on the side tabs of long wall (B) and the bottom of side wall (D) and connect to base (A). Take care to orient side wall (D) properly.
- 5) Next, place glue on the bottom of side wall (F) and connect.
- 6) Next, place glue on the side tabs and bottom of short wall (E) and connect.
- 7) Finally, place glue on the sides tabs and bottom of outer wall (G) and connect.
- 8) You can seat the inner walls and dividers, but don't glue until you determine what you want to store in them.



Building the Large Tray

This tray is used to store the large and small minis.

- 1) Place base (H) down on your workspace in the orientation noted to the left.
- 2) Next, place glue on the side tab of tall divider wall (I) and connect to long inner wall (J).
- 3) Next, place glue on the bottom of the structure (I, J) that you built in step 2 and connect to base (H).
- 4) Next, apply glue to the end tabs of long inner wall (J) and the bottom of outer wall (K) and connect to base (A). Repeat on the other side using outer wall (L).
- 5) Next, place glue on the end tab of tall divider wall (I) and the sides and bottom of outer wall (M) and connect.
- 6) Finally, place glue on the sides and bottom of outer wall (N) and connect.
- 7) You can seat the inner walls and dividers, but don't glue until you determine what you want to store in them.

- All Done! Enjoy -