

# MD-003 STORAGE SOLUTION

Miniatures Insert Kit for Massive Darkness™ Add-on Boxes

Supported boxes include: Noble Warriors & Sorcerers



**FOR USE WITH ADD-ON BOXES: NOBLE WARRIORS & SORCERERS**

## Construction Tips

- 1) Each piece should be removed from the frames with gentle pressure back and forth. You should not need a knife to cut pieces free.
- 2) Our inserts are designed to be glued together. We use Sobo craft glue, but any glue that is tacky and dries clear will work fine. Tacky glue assists with building as it holds better during construction. You can use painter's/masking tape for some joins, but glue is always best.
- 3) Keep some paper towels handy for cleanup during build.
- 4) Ensure you cleanup excess glue as you build. This is especially important in card lanes where dividers will be used or in spaces where a tray will be stored.
- 5) Check the build diagram included in the package for reference, including all parts, as well as build tips specific to this insert.
- 6) Always dry fit pieces first to ensure a good fit and to better understand how the kit goes together.
- 7) Allow your finished insert to dry overnight.
- 8) You can optionally sand and even stain your insert.
- 9) Don't hesitate to reach out to us if you have questions!

Visit [go7gaming.com](http://go7gaming.com) for a large selection of storage solutions. Follow us on Twitter: [@go7gaming](https://twitter.com/go7gaming) and Facebook: [go7gaming](https://facebook.com/go7gaming)



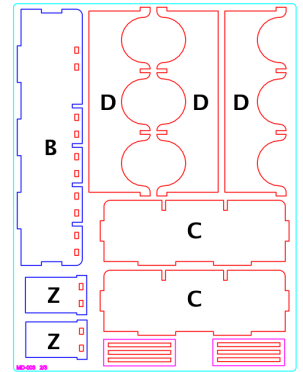
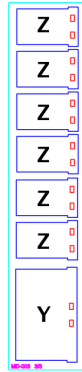
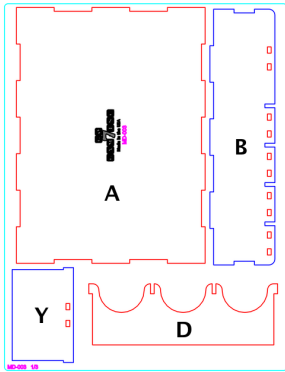
Made in the USA

NOT A CHILDREN'S TOY

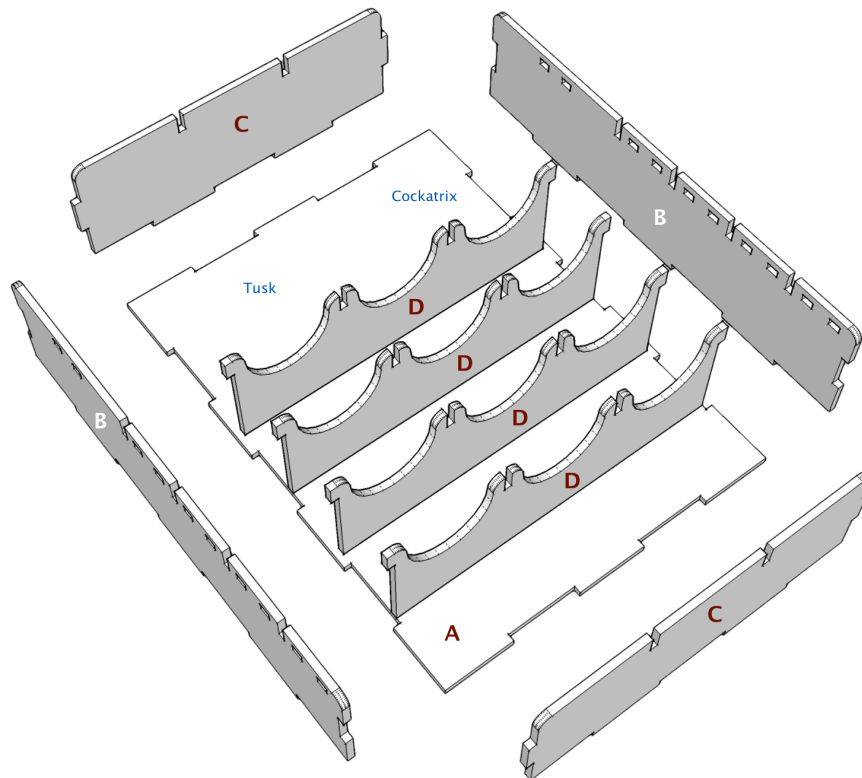
**AGE 14+**



# Build Instructions



Please reference the diagrams to understand how each component fits together. Also, dry fit the pieces to understand how it goes together and ensure everything is oriented properly before applying glue. Finally, cleanup excess glue to ensure a proper fit and finish, especially in card/divider areas.



## Building the Minis Tray

This tray is designed to provide minis storage.

- 1) Lay base (A) down on your workspace in the orientation noted above.
- 2) Next, place glue on the bottom and end tabs of end wall (C) and connect to base (A).
- 3) Next, place glue on the bottom of side wall (B) and connect.
- 4) Next, place glue on the bottom and end tabs of end wall (C) and connect.
- 5) Finally, place glue on the bottom of side wall (B) and connect. Please ensure your side wall (B) cutouts are aligned with the side wall (B) on the other side.
- 6) You can seat the inner walls (D), but don't glue until you determine what you want to store in the compartments.
- 7) You can seat a few dividers (Y, Z), but don't glue them until you determine what you want to store in the compartments.

– Your Are Done! Enjoy Your New Storage Solution –