

Go7 Gaming Fast-n-Easy Inserts

This line of inserts utilizes slide together construction that results in fast building inserts that also ship inexpensively. These inserts include wood dividers and sometimes include token trays with lids.

<http://go7gaming.com/product-tag/fastneasy/>

Check out our line of Bit Boxes. We have a multitude of designs to fit every need. We offer two sizes and internal compartment configurations from two - eight compartments. (BB-004 pictured; lid not shown)

Plus, our bit boxes are designed to fit inside the card lanes of most of our inserts, so you will always know where your bits are! Let Go7 help you store your bits in style.



<http://go7gaming.com/product-category/bit-boxes/>

Go7 Gaming Heritage Line Inserts

This line of inserts utilizes acrylic dividers and includes a base for the insert, in most cases. These inserts are structurally designed to provide a rock-solid enclosure to protect your cards and bits for a lifetime. Of course, they cost more to produce and to ship. Also, because of the inclusion of the base, they are a little easier to build. The insert base provides an almost foolproof platform for building.

<http://go7gaming.com/product-tag/heritage/>

Go7 Gaming Value Line Inserts

Our Value Line inserts lack bases, but provide additional structural support via strategically placed supports. Also, we use wood dividers instead of acrylic dividers. With these changes, the cost of Value Line inserts is significantly less than our Heritage Line inserts, as well as competitor's equivalent inserts. Plus, we have designed our Value Line inserts to fit into less expensive USPS flat-rate envelopes. This is a huge win for U.S. customers and will also reduce the shipping costs for our international customers.

<http://go7gaming.com/product-tag/valueline/>

AQIDRAG-001 KIT

HERITAGE LINE



THIS SOLUTION PROVIDES STORAGE FOR TWO DRAGONS

THIS STORAGE SOLUTION CAN BE USED IN ANY OF THE FOUR ARCADIA QUEST: INFERNO™ DRAGON BOXES OR EXTERNALLY. THIS SOLUTION CAN STORE ANY TWO OF THE DRAGONS.

ESTIMATED CONSTRUCTION TIME: 15 MINUTES

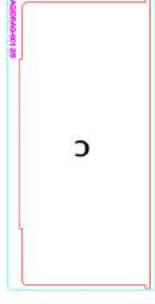
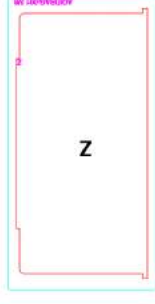
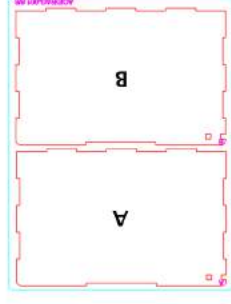
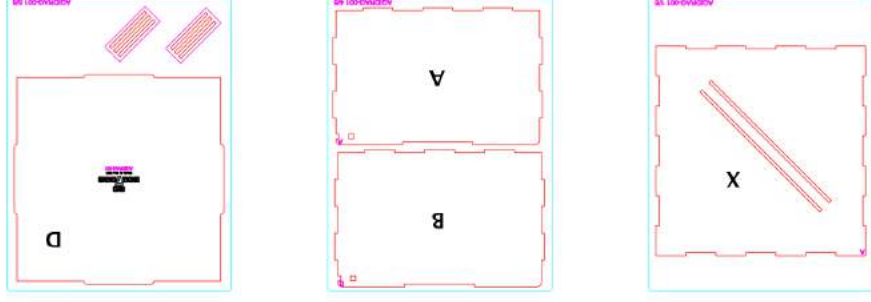
MATERIALS REQUIRED: **GLUE, MASKING/PAINTER'S TAPE**

KIT INCLUDES: (1x) AQIDRAG-001 TRAY WITH LID
(2x) DIVIDERS

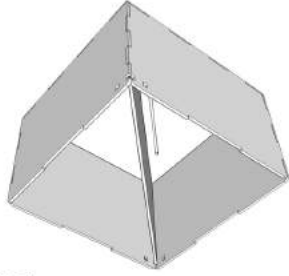
General Construction Tips

- 1) Each piece should be removed from the frames with gentle pressure back and forth. You should not need a knife to cut pieces free.
- 2) Our inserts are designed to be glued together. We use Sobo craft glue, but any glue that is tacky and dries clear will work fine. Tacky glue assists with building as it holds better during construction. You can use painter's/masking tape for some joins, but glue is always best.
- 3) Keep some paper towels handy for cleanup during build.
- 4) Ensure you cleanup excess glue as you build. This is especially important in card lanes where dividers will be used or in spaces where a tray will be stored. The small, thin sticks on your plates are for glue removal.
- 5) Always dry fit pieces first to ensure a good fit and to better understand how the kit goes together.
- 6) Allow your finished insert to dry overnight.
- 7) Don't hesitate to reach out to us if you have questions!

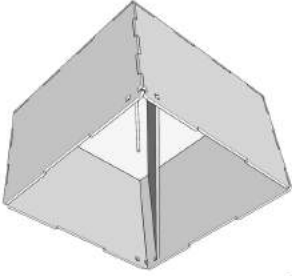
Kit Plates



3D Models



CONFIGURATION A



CONFIGURATION B

Configuration A:

Configuration A is designed to store the chaos & poison dragons. This configuration uses the long divider (C) and provides a 50/50 split in the tray for each dragon.

To build this configuration:

- 1) Place base (X) on your work area.
- 2) Next, apply glue to the bottom of long divider (C) and connect using the center cutout on base (X).
- 3) Orient the walls (A & B) so that the "A"s and "B"s face inward and are touching each other.
- 4) Next, apply glue to all touching surfaces and clean up excess glue.
- 5) Finally, place the lid on top after the glue has had a few minutes to set and leave overnight to dry.

Configuration B:

Configuration B is designed to store the fire & frost dragons. This configuration uses the short divider (Z) and provides a split in the tray for each dragon that accounts for the frost dragon's larger size.

To build this configuration:

- 1) Place base (X) on your work area.
- 2) Next, apply glue to the bottom of short divider (Z) and connect using the off-center cutout on base (X).
- 3) Orient the walls (A & B) so that the "A"s and "B"s face inward and are touching each other.
- 4) Next, apply glue to all touching surfaces (including where the short divider (Z) touches the tray walls) and clean up excess glue.
- 5) Finally, place the lid on top after the glue has had a few minutes to set and leave overnight to dry.

Congratulations! You have completed the construction of your new storage tray. If you have any questions/concerns, don't hesitate to contact us. Finally, please take a moment to review your new insert on our website.