

# INSERT FOR ELDRITCH HORROR™

EH-002 Storage Insert Kit for Eldritch Horror™ Expansions

Add-on insert kit with 5 removable trays and storage for cards and tokens



FITS LARGE BOXES (such as CORE, UTP, MOM)

## General Construction Tips

- 1) Each piece should be removed from the frames with gentle pressure back and forth. You should not need a knife to cut pieces free.
- 2) Our inserts are designed to be glued together. We use Sobo craft glue, but any glue that is tacky and dries clear will work fine. Tacky glue assists with building as it holds better during construction. You can use painter's/masking tape for some joins, but glue is always best.
- 3) Keep some paper towels handy for cleanup during build.
- 4) Ensure you cleanup excess glue as you build. This is especially important in card lanes where dividers will be used or in spaces where a tray will be stored.
- 5) Check the build diagram included in the package for reference, including all parts, as well as build tips specific to this insert.
- 6) Always dry fit pieces first to ensure a good fit and to better understand how the kit goes together.
- 7) Allow your finished insert to dry overnight.
- 8) You can optionally sand and even stain your insert.
- 9) Don't hesitate to reach out to us if you have questions!

Unlike many of our inserts, this is not a licensed insert. All trademarks/marks are the property of their respective owners.

NOT A CHILDREN'S TOY

**AGE 14+**

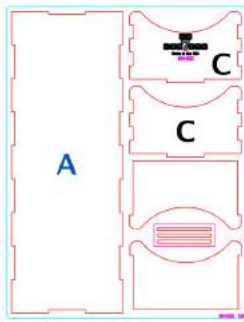
Visit [go7gaming.com](http://go7gaming.com) for a large selection of storage solutions.

Follow us on Twitter: [@go7gaming](https://twitter.com/go7gaming) and Facebook: [go7gaming](https://www.facebook.com/go7gaming)

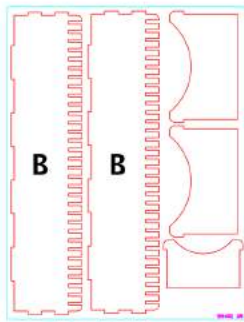
**GO**  
**GAMING**

Made in the USA

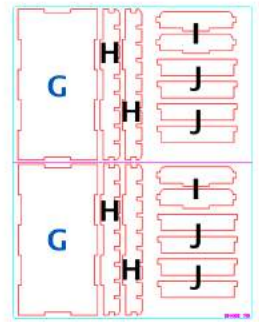
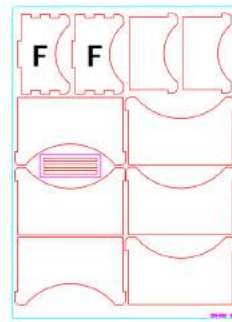
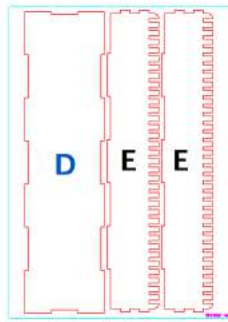
# Kit Plates



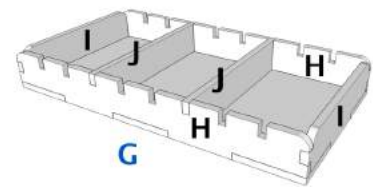
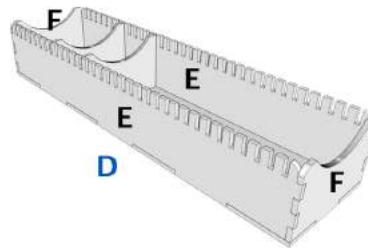
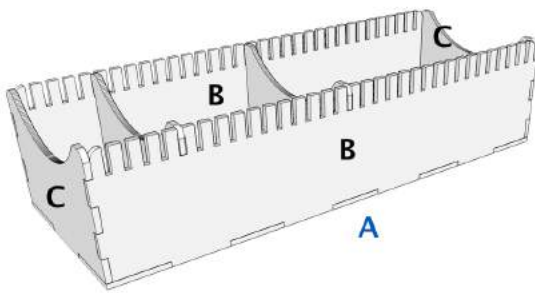
PLATES #1, #5



PLATES #2, #6



## 3D Models



## Build Instructions

This storage solution is designed to fit inside an EH large box (core, MOM, UTP) and provides expansion storage for cards and tokens. There are a total of 5 removable trays to store large cards, small cards, and various tokens or smaller bits. This storage system leaves 2mm free at the top for game manuals. These instructions will cover constructing the removable trays one-by-one.

After each piece is placed, you should cleanup excess glue using the provided glue sticks (short, thin wood strips on plates #1/#3/#5). Also, remember to dry fit everything **FIRST** so you understand where to place glue and how everything fits together. Let's begin by building the large card trays (A). These two trays are designed to store large cards (sleeved or unsleeved).

- 1) Lay base (A) down on your workspace. Apply glue to the bottom and both ends of outer wall (B) and connect to base (A).
- 2) Next, place glue on the bottom of end wall (C) and connect.
- 3) Next, place glue on the bottom and both ends of the other outer wall (B) and connect on the opposite side.
- 4) Next, place glue on the bottom of end wall (C) and connect.
- 5) Finally, I recommend placing a divider 2-3 spaces away from each end to ensure a perfect fit once dry.
- 6) Repeat build for the second large card tray.

Next, let's construct the small card tray (D). This tray is designed to store small cards.

- 1) Lay base (D) down on your workspace. Apply glue to the bottom and both ends of outer wall (E) and connect to base (D).
- 2) Next, place glue on the bottom of end wall (F) and connect.
- 3) Next, place glue on the bottom and both ends of the other outer wall (E) and connect on the opposite side.
- 4) Next, place glue on the bottom of end wall (F) and connect.
- 5) Finally, I recommend placing a divider 2-3 spaces away from each end to ensure a perfect fit once dry.

Finally, let's construct the two token trays (G). These trays are designed to store small tokens, plastic bases, and such.

- 1) Lay base (G) down on your workspace. Apply glue to the bottom and both ends of outer wall (H) and connect to base (G).
- 2) Next, place glue on the bottom of end wall (I) and connect.
- 3) Next, place glue on the bottom and both ends of the other outer wall (H) and connect on the opposite side.
- 4) Next, place glue on the bottom of end wall (I) and connect.
- 5) Finally, I recommend placing a couple of the dividers (J) in the tray (no glue at this time) to ensure a perfect fit once dry.
- 6) Repeat build for the second large card tray.
- 7) Once your trays have dried and you have determined how you want to divide and use the trays, you may glue the dividers into the tray.

Allow your trays to dry overnight and then place your components into the trays. Project complete!