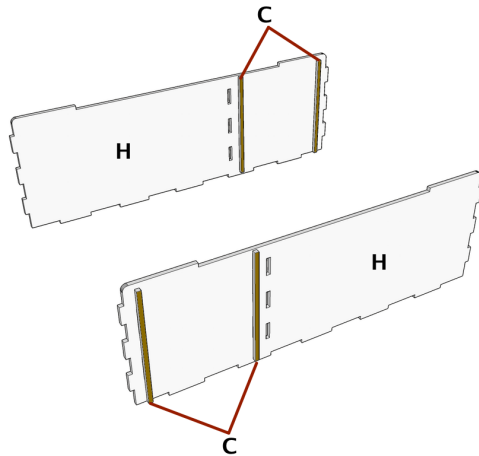
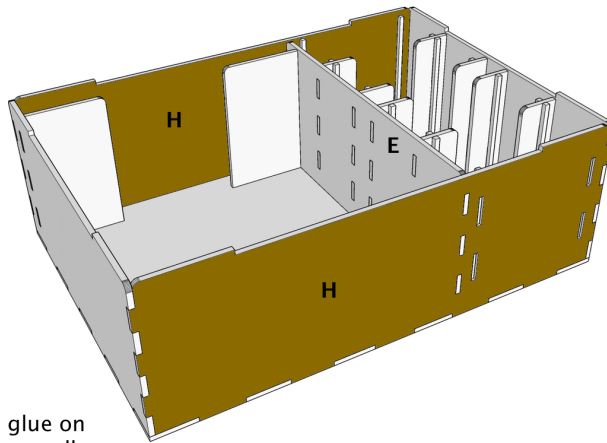


MOM-002



Step #4: Using glue, attach two rail guards (C) to each outer wall (H). Dry fit and pay attention to the proper orientation of each wall to ensure a smooth build.



Step #5: Finally, place glue on the end tabs of the inner wall (E) and the bottom and end tabs of each outer wall (H) and connect to base (A).

Congratulations! You have completed the construction of your new insert. Carefully place your lid on the box and allow your insert to dry overnight. Then organize your tiles and minis. If you have any questions/concerns, don't hesitate to contact us. Finally, please take a moment to review your new insert on our website.



STORES TILES & 16 SMALL MONSTER MINIS

THIS STORAGE SOLUTION IS COMPATIBLE WITH THE EXPANSION BOXES FOR MANSIONS OF MADNESS 2ed (RECURRING NIGHTMARES & SUPPRESSED MEMORIES). THE SOLUTION CAN BE SLIPPED INTO THE EXPANSION BOX OR CAN BE USED EXTERNALLY.

ESTIMATED CONSTRUCTION TIME: **35 MINUTES**

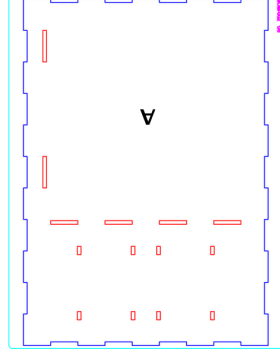
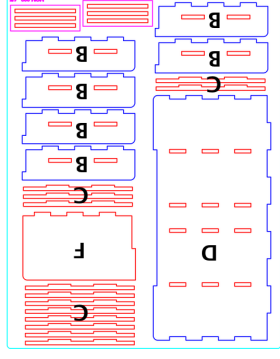
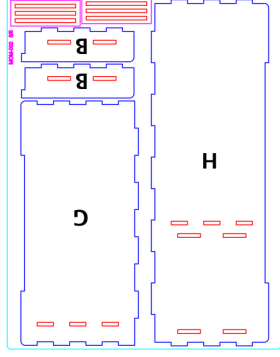
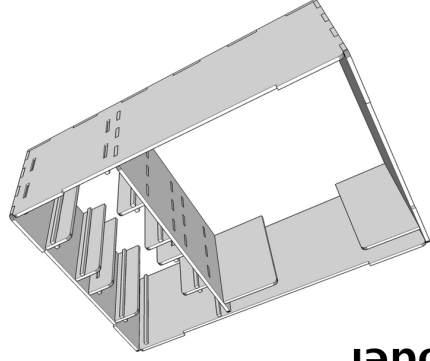
MATERIALS REQUIRED: **GLUE, MASKING/PAINTER'S TAPE**

KIT INCLUDES: **(1x) MAIN INSERT**

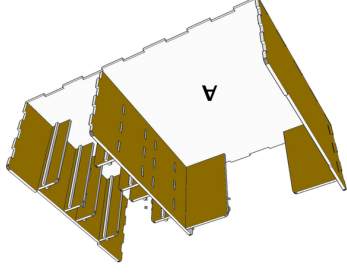
General Construction Tips

- 1) Each piece should be removed from the frames with gentle pressure back and forth. You should not need a knife to cut pieces free.
- 2) Our inserts are designed to be glued together. We use Sobo craft glue, but any glue that is tacky and dries clear will work fine. Tacky glue assists with building as it holds better during construction. You can use painter's/masking tape for some joins, but glue is always best.
- 3) Keep some paper towels handy for cleanup during build.
- 4) Ensure you cleanup excess glue as you build. This is especially important in card lanes where dividers will be used, in spaces where a tray will be stored, or in rail spaces used to store minis with bases.
- 5) Always dry fit pieces first to ensure a good fit and to better understand how the kit goes together.
- 6) Allow your finished insert to dry overnight.
- 7) Don't hesitate to reach out to us if you have questions!

3D Model

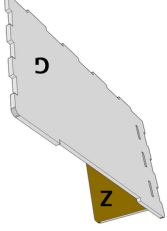


Kit Plates

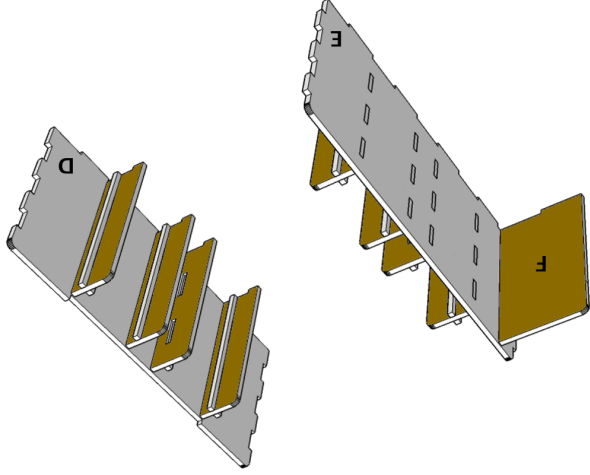


Step #3: Next, place glue on the bottom of the end walls (D, G) and the inner wall (E) and connect to the base (A).

Step #2: Next, glue the tile wall support (Z) to end wall (G). See the image below for to understand how the inner wall (E) and end walls (D) connect to the base.



Step #1: Next, glue your prepared rail assemblies to end wall (D) and inner wall (E). Then connect tile wall support (F) to inner wall (E).



RAIL Preparation
This kit contains eight rail assemblies. You should build them first according to the image below the line. Note that four of the assemblies have a rail guard (C) on both sides, while the outer four only have a rail assembly on one side. Dry fit the walls (D, E) and the rail assemblies to ensure you build them correctly. Clean up excess glue to ensure a smooth sliding action.

