

ZBP-004 INSERT

Check out our line of Bit Boxes. We have a multitude of designs to fit every need. We offer two sizes and internal compartment configurations from two – eight compartments. (BB-004 pictured; lid not shown)

Plus, our bit boxes are designed to fit inside the card lanes of most of our inserts, so you will always know where your bits are! Let Go7 help you store your bits in style.



<http://go7gaming.com/product-category/bit-boxes/>

Go7 Gaming Heritage Line Inserts

This line of inserts utilizes acrylic dividers and includes a base for the insert, in most cases. These inserts are structurally designed to provide a rock-solid enclosure to protect your cards and bits for a lifetime. Of course, they cost more to produce and to ship. Also, because of the inclusion of the base, they are a little easier to build. The insert base provides an almost foolproof platform for building.

<http://go7gaming.com/product-tag/heritage/>

Go7 Gaming Value Line Inserts

Our Value Line inserts lack bases, but provide additional structural support via strategically placed supports. Also, we use wood dividers instead of acrylic dividers. With these changes, the cost of Value Line inserts is significantly less than our Heritage Line inserts, as well as competitor's equivalent inserts. Plus, we have designed our Value Line inserts to fit into less expensive USPS flat-rate envelopes. This is a huge win for U.S. customers and will also reduce the shipping costs for our international customers.

<http://go7gaming.com/product-tag/valueline/>

Copyright 2016, Go7 Gaming. All Rights Reserved. Unlike many of our inserts, this is not a licensed insert. All trademarks/marks are the property of their respective owners. Visit go7gaming.com. Twitter: [@go7gaming](https://twitter.com/go7gaming) and Facebook: [go7gaming](https://www.facebook.com/go7gaming)

HERITAGE LINE



THIS INSERT PROVIDES FLEXIBLE STORAGE FOR ZOMBICIDE®: BLACK PLAGUE COMPONENTS. IT IS DESIGNED TO BE PLACED INSIDE THE NPC 1, NPC 2, MURDER OF THE CROWZ, OR DEAD EYE WALKER BOX.

ESTIMATED CONSTRUCTION TIME: 15 MINUTES

MATERIALS REQUIRED: GLUE, MASKING/PAINTER'S TAPE

**KIT INCLUDES: (1x) ZBP-004 INSERT KIT
(6x) LONG DIVIDERS
(15x) CROSS DIVIDERS**

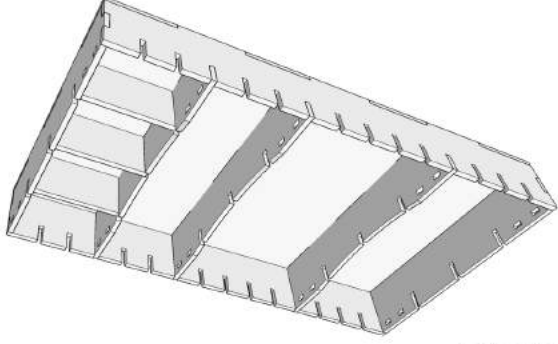
AGE 14+
NOT A CHILDREN'S TOY

**GO
GAMING**
Made in the USA

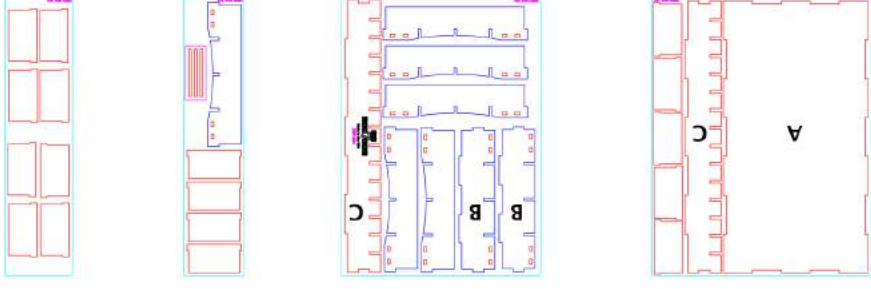
General Construction Tips

- 1) Each piece should be removed from the frames with gentle pressure back and forth. You should not need a knife to cut pieces free.
- 2) Our inserts are designed to be glued together. We use Sobo craft glue, but any glue that is tacky and dries clear will work fine. Tacky glue assists with building as it holds better during construction. You can use painter's/masking tape for some joins, but glue is always best.
- 3) Keep some paper towels handy for cleanup during build.
- 4) Ensure you cleanup excess glue as you build. This is especially important in card lanes where dividers will be used or in spaces where a tray will be stored. The small, thin sticks on your plates are for glue removal.
- 5) Always dry fit pieces first to ensure a good fit and to better understand how the kit goes together before gluing!
- 6) Allow your finished insert to dry overnight.
- 7) Don't hesitate to reach out to us if you have questions!

3D Models

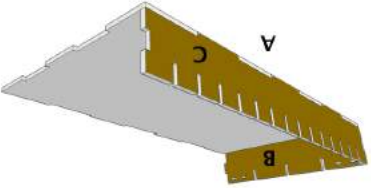


Kit Plates

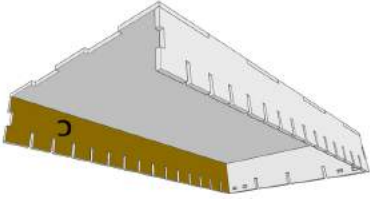


This flexible insert is designed to store minis and other items from Zombicide®: Black Plague.

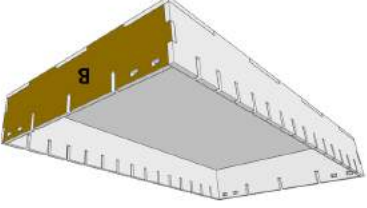
Step #1: Place base (A) down on your construction surface. Place glue on both end tabs and the bottom of side wall (B) and connect to base (A). Next, place glue on the bottom of long wall (C) and connect.



Step #2: Place glue on the bottom of other long wall (C) and connect.



Step #3: Place glue on both end tabs and the bottom of other side wall (B) and connect.



Step #4: Without gluing, place a couple of the long dividers in the tray and then check all points where the wood connects. This will ensure a perfect fit once the glue has dried. You may then remove the dividers and configure your insert however you like.

Congratulations! You have completed the construction of your new insert. Allow your insert to dry overnight, insert dividers as needed, place it in your expansion box, and enjoy your new storage solution. If you have any questions/concerns, don't hesitate to contact us. Finally, please take a moment to review your new insert on our website.