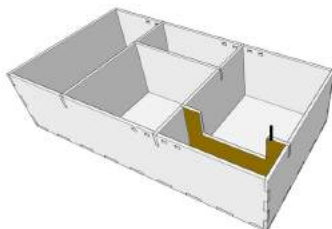
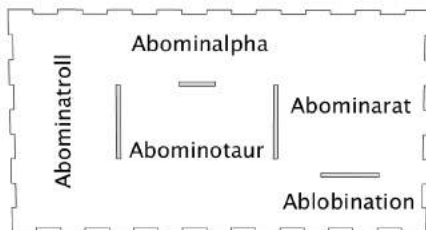


ZBP-003 INSERT

Step #6: Finally, place glue on the left and right upper tabs of cross wall (I) and connect.



Step #7: You may now place the etched name tabs according to the key below.



Congratulations! You have completed the construction of your new insert. Allow your insert and tray to dry overnight, place it in your expansion box, and store your large zombie minis. If you have any questions/concerns, don't hesitate to contact us. Finally, please take a moment to review your new insert on our website.



Go7 Gaming Value Line Inserts

Our Value Line inserts lack bases, but provide additional structural support via strategically placed supports. Also, we use wood dividers instead of acrylic dividers. With these changes, the cost of Value Line inserts is significantly less than our Heritage Line inserts, as well as competitor's equivalent inserts. Plus, we have designed our Value Line inserts to fit into less expensive USPS flat-rate envelopes. This is a huge win for U.S. customers and will also reduce the shipping costs for our international customers.

<http://go7gaming.com/product-tag/valueline/>

THIS INSERT PROVIDES STORAGE FOR THE FIVE LARGE ZOMBIE MINIS AVAILABLE FOR ZOMBICIDE®: BLACK PLAGUE. IT IS DESIGNED TO BE USED WITH YOUR ZOMBIE BOSSES EXPANSION BOX.

ESTIMATED CONSTRUCTION TIME: 15 MINUTES

MATERIALS REQUIRED: GLUE, MASKING/PAINTER'S TAPE

KIT INCLUDES: (1x) ZBP-003 INSERT KIT
(5x) ETCHED NAME TABS

Copyright 2016, Go7 Gaming. All Rights Reserved. Unlike many of our inserts, this is not a licensed insert. All trademarks/marks are the property of their respective owners. Visit go7gaming.com. Twitter: [@go7gaming](https://twitter.com/go7gaming) and Facebook: [go7gaming](https://www.facebook.com/go7gaming)

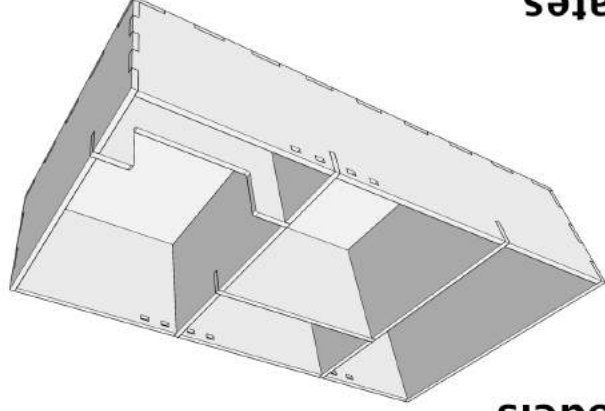
AGE 14+
NOT A CHILDREN'S TOY

GO
GAMING
Made in the USA

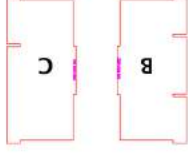
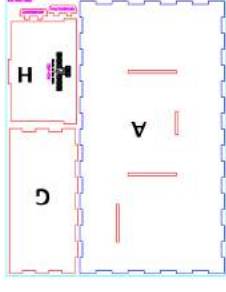
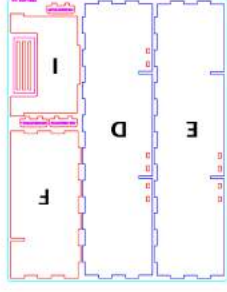
General Construction Tips

- 1) Each piece should be removed from the frames with gentle pressure back and forth. You should not need a knife to cut pieces free.
- 2) Our inserts are designed to be glued together. We use Sobo craft glue, but any glue that is tacky and dries clear will work fine. Tacky glue assists with building as it holds better during construction. You can use painter's/ masking tape for some joins, but glue is always best.
- 3) Keep some paper towels handy for cleanup during build.
- 4) Ensure you cleanup excess glue as you build. This is especially important in card lanes where dividers will be used or in spaces where a tray will be stored. The small, thin sticks on your plates are for glue removal.
- 5) Always dry fit pieces first to ensure a good fit and to better understand how the kit goes together before gluing!
- 6) Allow your finished insert to dry overnight.
- 7) Don't hesitate to reach out to us if you have questions!

3D Models

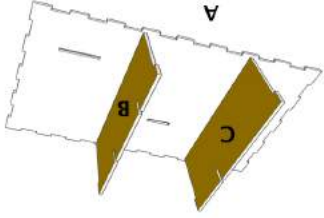


Kit Plates

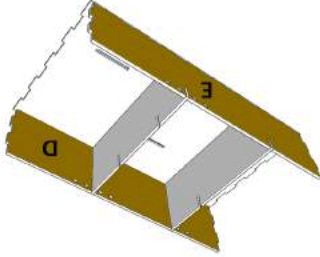


This insert is designed to store the large minis from Zombicide@: Black Plague Kickstarter extras and the Zombie Bosses Pack.

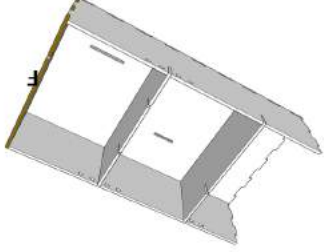
Step #1: Place base (A) down on your construction surface. Place glue on the bottom of inner wall (B, two cutouts at the top) and connect to base (A). Do the same for inner wall (C, one cutout at the top).



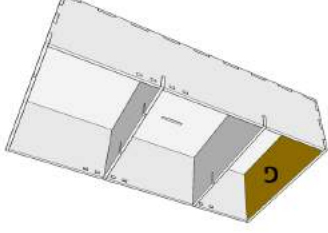
Step #2: Place glue on both ends of both inner walls (B + C) and then on the bottom of rear wall (D) and connect. Repeat on the other side with front wall (E).



Step #3: Place glue on both ends and the bottom of side wall (F) and connect.



Step #4: Place glue on both ends and the bottom of side wall (G) and connect.



Step #5: Place glue on the left and right upper tabs of cross wall (H) and connect.

