

INSERT FOR BLOOD RAGE

Model BRAGE-001 Miniatures Insert Kit for the Blood Rage Base Box

Complete insert kit with removable trays and storage for miniatures, cards, and tokens



General Construction Tips

- 1) Each piece should be removed from the frames with gentle pressure back and forth. You should not need a knife to cut pieces free.
- 2) Our inserts are designed to be glued together. We use Sobo craft glue, but any glue that is tacky and dries clear will work fine. Tacky glue assists with building as it holds better during construction.
- 3) Keep some paper towels handy for cleanup during build.
- 4) Ensure you cleanup excess glue as you build. This is especially important in card lanes where dividers will be used or in spaces where a tray will be stored. Glue sticks are provided to assist.
- 5) Check the build diagram included in the package for reference, including all parts, as well as build tips specific to this insert.
- 6) Always dry fit pieces first to ensure a good fit and to better understand how the kit goes together.
- 7) Allow your finished insert to dry overnight.
- 8) You can optionally sand and even stain your insert.
- 9) Don't hesitate to reach out to us if you have questions!

Unlike many of our inserts, this is not a licensed insert. All trademarks/marks are the property of their respective owners.

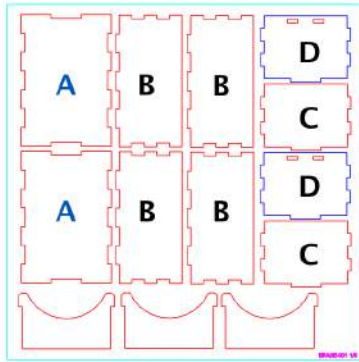
NOT A CHILDREN'S TOY
AGE 14+

Visit go7gaming.com for a large selection of storage solutions.

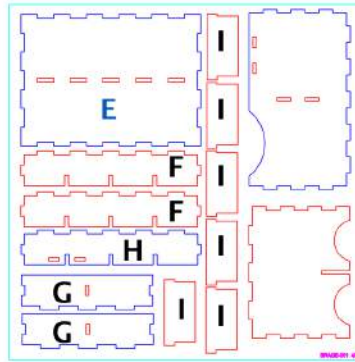
Follow us on Twitter: [@go7gaming](https://twitter.com/go7gaming) and Facebook: [go7gaming](https://www.facebook.com/go7gaming)

GO
GAM7ING
Made in the USA

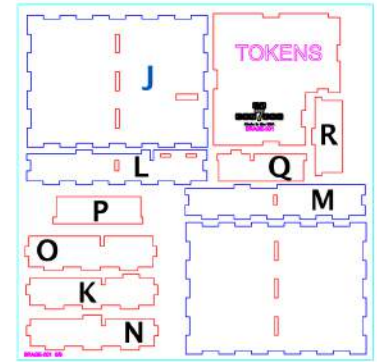
Kit Plates



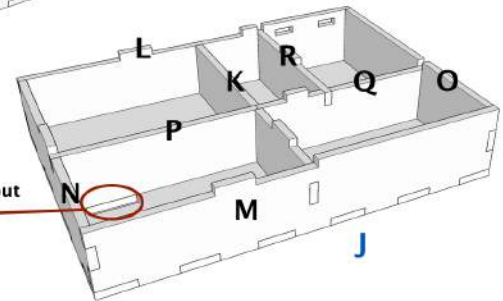
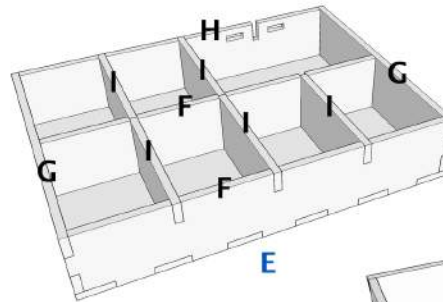
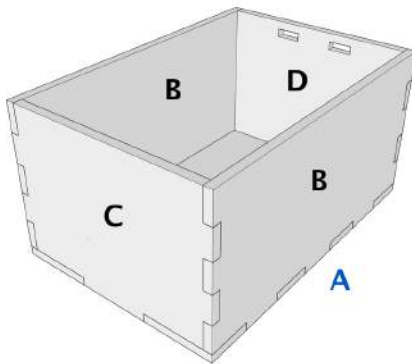
You will need plates #1, #2, and #3 to build all six A trays.



You will need plates #4 and #8 to build both E trays.



3D Models



Note base (J) orientation and cutout circled here. Dry fit the token tray to ensure proper build!

Build Instructions

This storage solution is designed to fit inside the Blood Rage base box. There are a total of 13 trays to store all of your components. Note that your God cards should simply be stored in the manual or in the manual storage area. These instructions will cover constructing the removable trays one-by-one. Together, these components provide a versatile storage solution with room for the base game and Kickstarter/retail expansion content. We also include etched tabs to label your factions and components.

After each piece is placed, you should cleanup excess glue using the provided glue sticks (short, thin wood strips on plate #6). Also, remember to dry fit each tray as you build so you understand where to place glue and how everything fits together. Let's begin by building the six player miniatures bins (A). These trays are designed to hold each faction and their associated tokens.

- 1) Lay base (A) down on your workspace. Apply glue to the bottom of long side wall (B) and apply glue to the bottom and both side tabs of end wall (C) and then connect all three together.
- 2) Next, apply glue to the bottom of long side wall (B) and connect it to the structure.
- 3) Finally, place glue on the bottom and side tabs of tabbed end wall (D) and connect.
- 4) Repeat steps 1 - 3 for the other five player miniatures bins.

Next, let's construct the two expansions storage trays for Mystics and Gods (E).

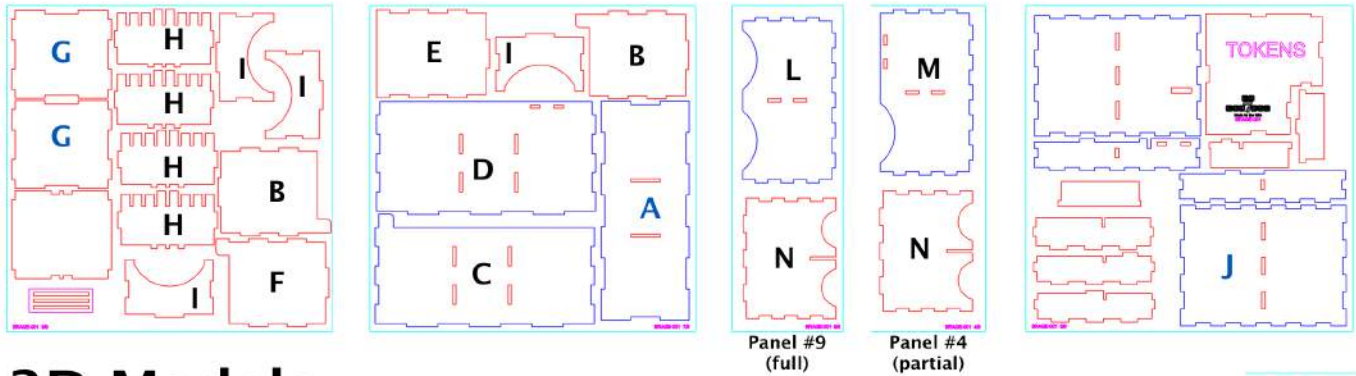
- 1) Lay base (E) down on your workspace. Apply glue to the bottom of long divider wall (F) and connect in the center of base (E).
- 2) Next, apply glue to the end tabs of long divider wall (F) and the bottom of side wall (G) and connect. Repeat for the other side wall (G).
- 3) Next, apply glue to bottom and ends of the other long divider wall (F) and connect.
- 4) Finally, apply glue to bottom and ends of rear divider wall (H) and connect.
- 5) Once dry, you can arrange your dividers (I), as needed. A small dab of glue can be used to anchor each divider, if needed.

Next, let's construct the token storage tray (J). Make careful note of each piece and dry fit this tray. It's complex.

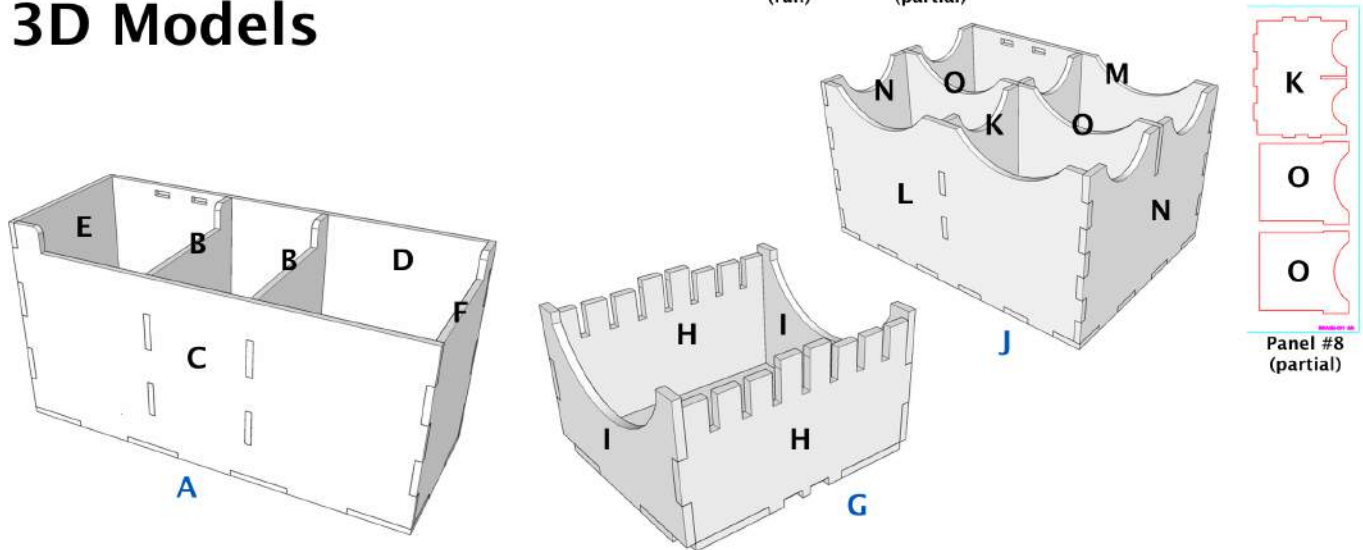
- 1) Lay base (J) down on your workspace. Apply glue to the bottom of center divider wall (K) and connect across the center of base (J).
- 2) Next, apply glue to the end tabs of center divider wall (K) and the bottom of rear wall (L) and connect.
- 3) Next, apply glue to the bottom of front wall (M) and connect.
- 4) Next, apply glue to bottom and ends of tall side wall (O) and connect.
- 5) Next, apply glue to bottom and ends of short side wall (N) and connect.
- 5) Finally, place internal dividers (P, Q, R). A small dab of glue SHOULD be used to anchor each divider to help secure the tray lid.

Allow your trays to dry overnight and then place your components into the trays. Instructions continue on next page.

Kit Plates



3D Models



Build Instructions

Next, let's construct the large miniatures storage tray (A). Note that pieces for this tray are located on the first two plates above.

The monster holding the rock above his head will sit slightly above the top of this tray (center compartment) and the board will rest on it. You can choose to omit one or more of the internal dividers during construction below and lay monsters down to avoid this.

- 1) Lay base (A) down on your workspace. Apply glue to the bottom of both center dividers (B) and connect them.
- 2) Next, apply glue to the side tabs of both center dividers (B) and the bottom of front wall (C) and connect.
- 3) Next, apply glue to the bottom of rear wall (D) and connect.
- 4) Finally, apply glue to bottom and sides of tall end wall (E) and connect. Repeat for notched end wall (F).

Next, let's construct the card trays (G). These trays stack together, have a lid, and store on their side. Also, one of the end walls for these trays is located on the second plate above.

- 1) Lay base (G) down on your workspace. Apply glue to the bottom of long side wall (H) and apply glue to the bottom and both side tabs of end wall (I) and then connect all three together.
- 2) Next, apply glue to the bottom of the other long side wall (H) and connect it to the structure.
- 3) Finally, place glue on the bottom and side tabs of the other end wall (I) and connect.
- 4) Repeat steps 1 – 3 for the other card storage tray. You should allow the trays to dry for 5 minutes and then place a couple of dividers in each tray carefully to ensure a perfect fit.

Finally, let's construct the medium miniatures tray (J). The pieces for this tray are located on the last four plates above.

- 1) Lay base (J) down on your workspace. Apply glue to the bottom of center divider (K) and connect them.
- 2) Next, apply glue to the side tabs of center divider (K) and the bottom of front wall (L) and connect.
- 3) Next, apply glue to the bottom of rear wall (M) and connect.
- 4) Next, apply glue to bottom and sides of end wall (N) and connect. Repeat for the other end wall (N).
- 5) Finally, place dividers (O). A small dab of glue can be used to anchor each divider, if needed.

Allow your trays to dry overnight and then place your components into the trays.