

ZOMB-EXP-002 INSERT

Storage Insert Kit for Zombicide: Angry Neighbors (S3), Zombicide: Toxic City Mall (S2)
Complete insert kit with removable trays and storage for miniatures, cards, tokens and tiles



General Construction Tips

- 1) Each piece should be removed from the frames with gentle pressure back and forth. You should not need a knife to cut pieces free.
- 2) Our inserts are designed to be glued together. We use Sobo craft glue, but any glue that is tacky and dries clear will work fine. Tacky glue assists with building as it holds better during construction. You can use painter's/masking tape for some joins, but glue is always best.
- 3) Keep some paper towels handy for cleanup during build.
- 4) Ensure you cleanup excess glue as you build. This is especially important in card lanes where dividers will be used or in spaces where a tray will be stored.
- 5) Check the build diagram included in the package for reference, including all parts, as well as build tips specific to this insert.
- 6) Always dry fit pieces first to ensure a good fit and to better understand how the kit goes together.
- 7) Allow your finished insert to dry overnight.
- 8) You can optionally sand and even stain your insert.
- 9) Don't hesitate to reach out to us if you have questions!

Unlike many of our inserts, this is not a licensed insert. All trademarks/marks are the property of their respective owners.

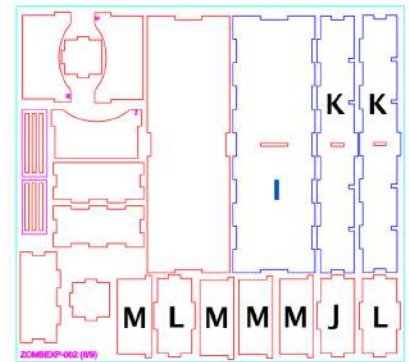
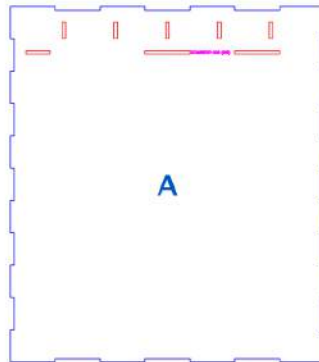
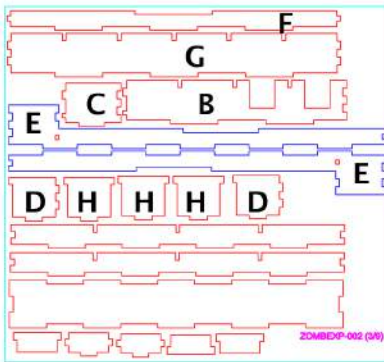
NOT A CHILDREN'S TOY
AGE 14+

Visit go7gaming.com for a large selection of storage solutions.

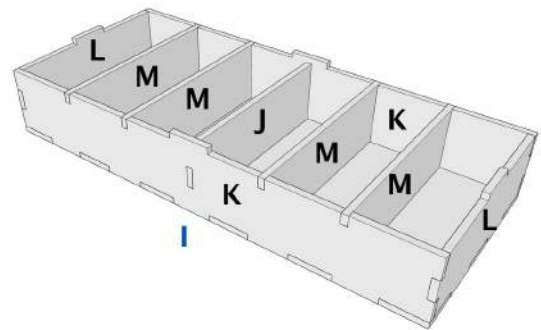
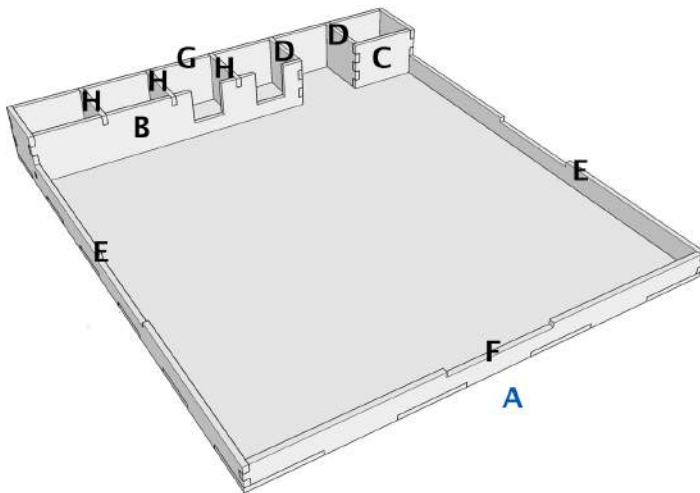
Follow us on Twitter: [@go7gaming](https://twitter.com/go7gaming) and Facebook: [go7gaming](https://www.facebook.com/go7gaming)

GO
GAMING
Made in the USA

Kit Plates



3D Models



Build Instructions

This storage solution is designed to fit inside the Zombicide Season 2/3 large expansion boxes (Toxic City Mall, Angry Neighbors). There are a total of 3 miniatures and cards trays, one shallow token tray, one small bit tray, one lidded token box, and a tile storage area for your map tiles. These instructions will cover constructing the components one-by-one. Together, these components provide a versatile storage solution with room for the base game and expansion content.

After each piece is placed, you should cleanup excess glue using the provided glue sticks (short, thin wood strips on plate #6). Also, remember to dry fit everything so you understand where to place glue and how everything fits together. Let's begin by building the tile and miniatures storage tray (A).

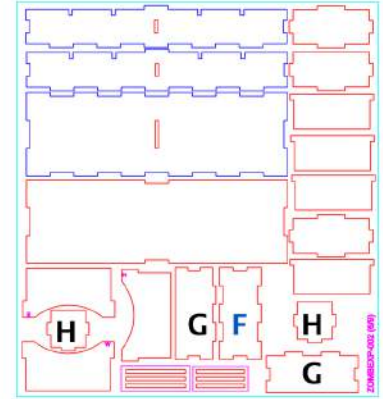
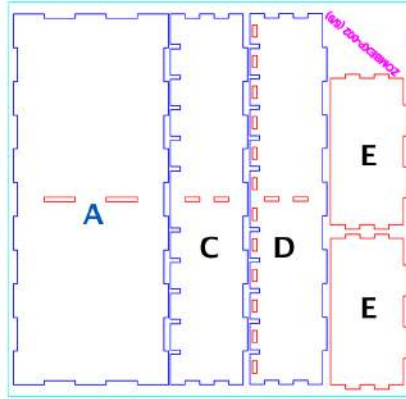
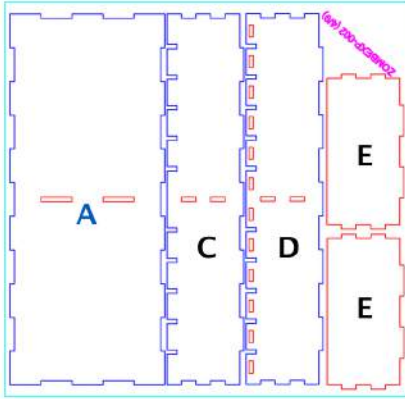
- 1) Lay base (A) down on your workspace. Apply glue to the bottom of the large inner lane divider (B) and connect them.
- 2) Next, apply glue to the bottom of the small inner lane divider (C) and connect it to the structure.
- 3) Next, apply glue to the bottom and the two-tab end of end splitter (D) and connect it to the structure with large inner lane divider (B).
- 4) Next, apply glue to the bottom and the two-tab end of end splitter (D) and connect it to the structure with small inner lane divider (C).
- 5) Next, place glue on the end tabs of large inner lane divider (B) and the bottom of long outer wall (E) and connect them. Repeat for the other long outer wall (E).
- 6) Next, place glue on the ends and bottom of short wall (F) and connect to the structure.
- 7) Next, place glue on the ends and bottom of short minis wall (G) and connect to the structure.
- 8) Finally, place the dividers (H). You can wait to glue these until you finalize your full storage plan, if you have multiple inserts. In some cases, you might want to use less dividers and provide larger compartments.

Next, let's construct the token storage tray (I).

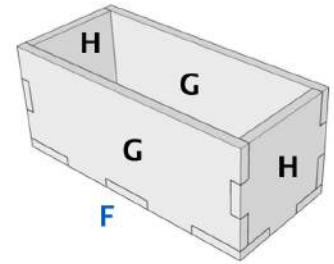
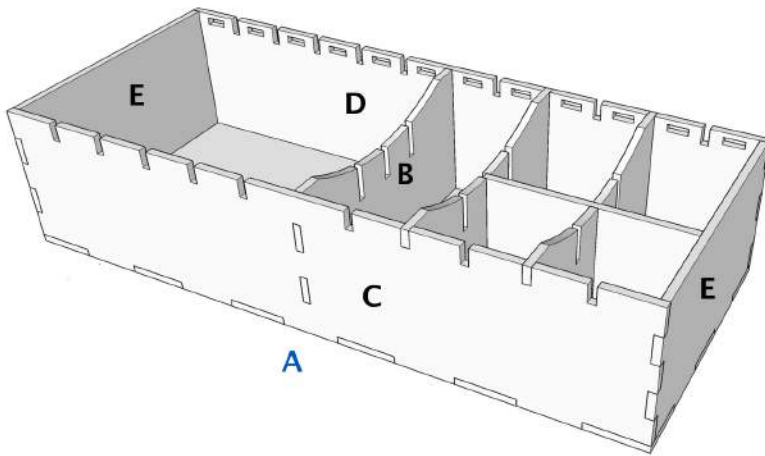
- 1) Lay base (I) down on your workspace. Apply glue to the bottom of center divider (J) and connect them.
- 2) Next, apply glue to the end tabs of center divider (J) and the bottom of long wall (K) and connect. Repeat for the other long wall (K).
- 3) Finally, apply glue to bottom and ends of side wall (L) and connect. Repeat for the other side wall (L).
- 4) Once dry, you can arrange your dividers (M), as needed. A small dab of glue can be used to anchor each divider if you want them to be permanently anchored.

Allow your trays to dry overnight and then place your components into the trays. Instructions continue on next page.

Kit Plates



3D Models

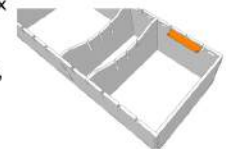


Build Instructions

Next, let's construct the large miniatures storage trays (A). These versatile minis trays allow for variable-size storage areas that can store minis in bulk or individually. Zombies should be stored in bulk, but Zombivor or player minis can be stored individually. The small cutouts on the rear tray wall allow for the use of etched tags to note what is stored in each compartment.

Base game tags are included in each kit and ZOMB-ENG-001 includes etched tags and dividers for small box expansions.

Remember, after each piece is placed, you should cleanup excess glue using the provided glue sticks (short, thin wood strips). Also, remember to dry fit everything so you understand where to place glue and how everything fits together.



Etched Tags Use

Also, note that the center dividers (B) are located on plate #9.

- 1) Lay base (A) down on your workspace. Apply glue to the bottom of center divider (B) and connect them.
- 2) Next, apply glue to the end tabs of center divider (B) and the bottom of long wall (C) and connect. Repeat for the other long wall (D).
- 3) Finally, apply glue to bottom and ends of end wall (E) and connect. Repeat for the other end wall (E).
- 4) Repeat steps #1-#3 for the second large miniatures tray.

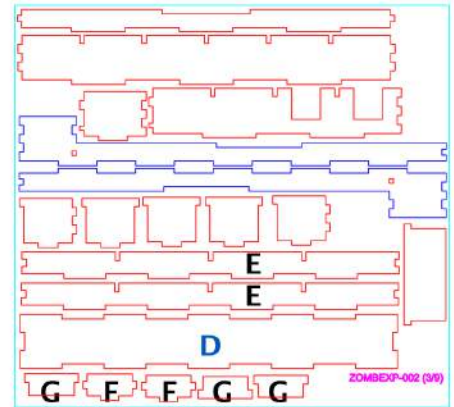
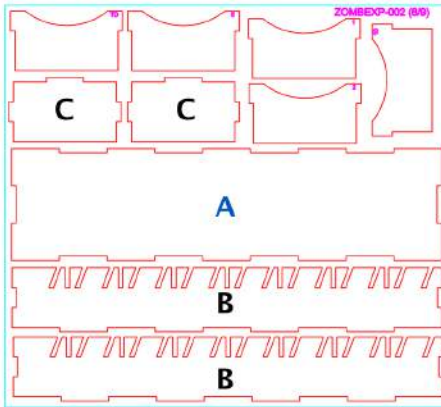
Once dry, you can arrange your dividers, as needed. A small dab of glue can be used to anchor each divider if you want them to be permanently anchored. This tray has two unique dividers provided. The first is similar to center divider (B) and is a cross divider. The second is used to create smaller compartments and is a splitter.

Next, let's construct the small bit tray (F).

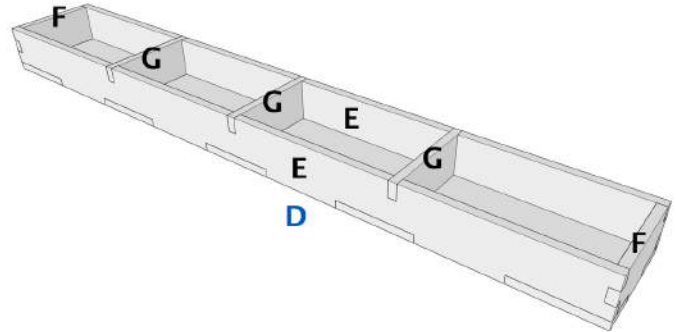
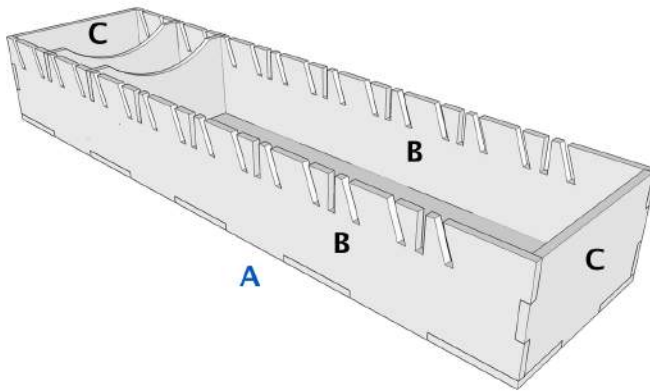
- 1) Lay base (F) down on your workspace. Apply glue to the bottom and left side of long wall (G) and to the bottom and both sides of short wall (H) and connect all three together.
- 2) Next, apply glue to the bottom of the other long wall (G) and connect it to the structure.
- 3) Finally, apply glue to bottom and sides of the other short wall (H) and connect.

Allow your trays to dry overnight and then place your components into the trays. Instructions continue on next page.

Kit Plates



3D Models



Build Instructions

Finally, let's build the last two trays! After each piece is placed, you should cleanup excess glue using the provided glue sticks (short, thin wood strips). Also, remember to dry fit everything so you understand where to place glue and how everything fits together.

Let's build the long storage tray (A) now. Note that this tray supports using the dividers in an angled state for small card storage and in a non-angled state to store other items. **Note: ensure that you align each long side wall (B) identically or the angled dividers will not be usable.**

- 1) Lay base (A) down on your workspace. Apply glue to the bottom of long side wall (B) and apply glue to the bottom and both side tabs of end wall (C) and then connect them together on base (A).
- 2) Next, apply glue to the bottom of long side wall (B) and connect it to the structure.
- 3) Finally, place glue on the bottom and side tabs of the other end wall (C) and connect. You may want to place a divider or two into the tray to ensure a perfect fit; just make sure you have cleaned up all of the excess glue.

Finally, let's build the long, shallow token tray (D) now.

- 1) Lay base (D) down on your workspace. Apply glue to the bottom and left side of long wall (E) and to the bottom and both sides of short wall (F) and connect all three together.
- 2) Next, apply glue to the bottom of the other long wall (E) and connect it to the structure.
- 3) Next, apply glue to bottom and sides of the other short wall (F) and connect.
- 4) Finally, place dividers (G), as needed. A small dab of glue on the underside of the tabs of each divider will hold them in place during use.

Allow your trays to dry overnight and then place your components into the trays. You have completed the project. **+2 CRAFTING, +1 DEXTERITY**