

Congratulations! You have completed the construction of your small card tray. Allow your tray to dry overnight, place it in your game box, and organize your cards. If you have any questions/concerns, don't hesitate to contact us. Finally, please take a moment to review your purchase on our website.

Check out our line of Bit Boxes. We have a multitude of designs to fit every need. We offer two sizes and internal compartment configurations from two – eight compartments. (BB-004 pictured; lid not shown)

Plus, our bit boxes are designed to fit inside the card lanes of most of our inserts, so you will always know where your bits are! Let Go7 help you store your bits in style.



<http://go7gaming.com/product-category/bit-boxes/>

Go7 Gaming Heritage Line Inserts

This line of inserts utilizes acrylic dividers and includes a base for the insert, in most cases. These inserts are structurally designed to provide a rock-solid enclosure to protect your cards and bits for a lifetime. Of course, they cost more to produce and to ship. Also, because of the inclusion of the base, they are a little easier to build. The insert base provides an almost foolproof platform for building.

<http://go7gaming.com/product-tag/heritage/>

Go7 Gaming Value Line Inserts

Our Value Line inserts lack bases, but provide additional structural support via strategically placed supports. Also, we use wood dividers instead of acrylic dividers. With these changes, the cost of Value Line inserts is significantly less than our Heritage Line inserts, as well as competitor's equivalent inserts. Plus, we have designed our Value Line inserts to fit into less expensive USPS flat-rate envelopes. This is a huge win for U.S. customers and will also reduce the shipping costs for our international customers.

<http://go7gaming.com/product-tag/valueline/>

SMALL CARD TRAY

ZOMB-BASE2-SCARD-001

HERITAGE LINE



THIS SMALL CARD TRAY IS DESIGNED TO BE USED WITH OUR INSERT FOR ZOMBICIDE (ZOMB-BASE2-001).

ESTIMATED CONSTRUCTION TIME: 10 MINUTES

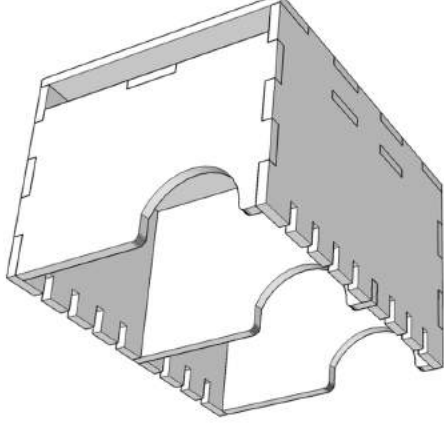
MATERIALS REQUIRED: GLUE, MASKING/PAINTER'S TAPE

KIT INCLUDES: (1x) SMALL CARD TRAY
(6x) WOOD DIVIDERS

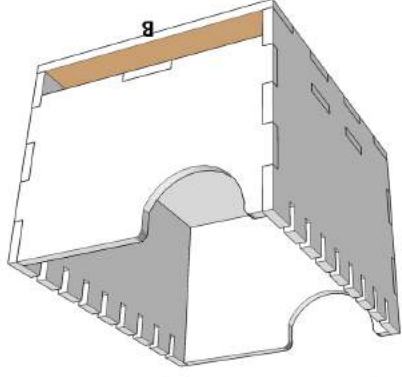
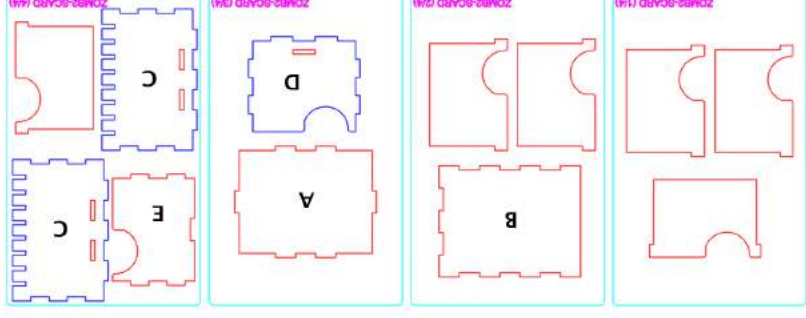
General Construction Tips

- 1) Each piece should be removed from the frames with gentle pressure back and forth. You should not need a knife to cut pieces free.
- 2) Our inserts are designed to be glued together. We use Sobo craft glue, but any glue that is tacky and dries clear will work fine. Tacky glue assists with building as it holds better during construction. You can use painters/masking tape for some joins, but glue is always best.
- 3) Keep some paper towels handy for cleanup during build.
- 4) Ensure you cleanup excess glue as you build. This is especially important in card lanes where dividers will be used or in spaces where a tray will be stored.
- 5) Always dry fit pieces first to ensure a good fit and to better understand how the kit goes together.
- 6) Allow your finished insert to dry overnight.
- 7) Don't hesitate to reach out to us if you have questions!

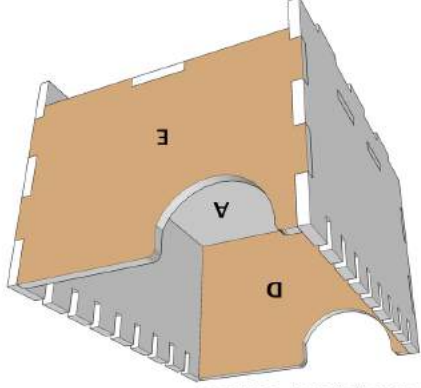
3D Model



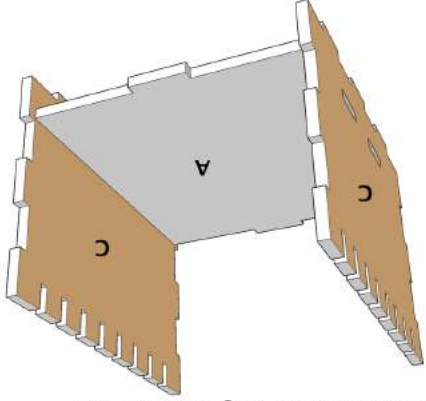
Kit Plates



Step #3: Place glue on the side and rear tabs of lower base (B) and connect. Note that glue should not be placed on the front portion of lower base (B).



Step #2: Place glue on both sides and the bottom of the short divider wall (E) and connect. Note that short divider wall (E) is not as tall as tall divider wall (D). Place glue on the rear tab of inner base (A) and both sides of the tall divider wall (D) and connect.



Step #1: Place glue on both long sides of inner base (A) and then connect long side wall (C). Repeat for the other long side wall (C).