

Officially Licensed Insert for Argent: The Consortium + Mancers of the University



General Construction Tips

- 1) Each piece should be removed from the frames with gentle pressure back and forth. You should not need a knife to cut pieces free.
- 2) Our inserts are designed to be glued together. We use Sobo craft glue, but any glue that is tacky and dries clear will work fine. Tacky glue assists with building as it holds better during construction.
- 3) Keep some paper towels handy for cleanup during build.
- 4) Ensure you cleanup excess glue as you build. This is especially important in card lanes where dividers will be used.
- 5) Check the build diagram on the back of this sheet for quick reference, including all parts, as well as build tips specific to this insert.
- 6) Always dry fit pieces first to ensure a good fit and to better understand how the kit goes together.
- 7) Allow your completed insert to dry overnight.
- 8) You can optionally sand and even stain your insert.
- 9) Don't hesitate to reach out to us if you have questions!

NOT A CHILDREN'S TOY

AGE 14+

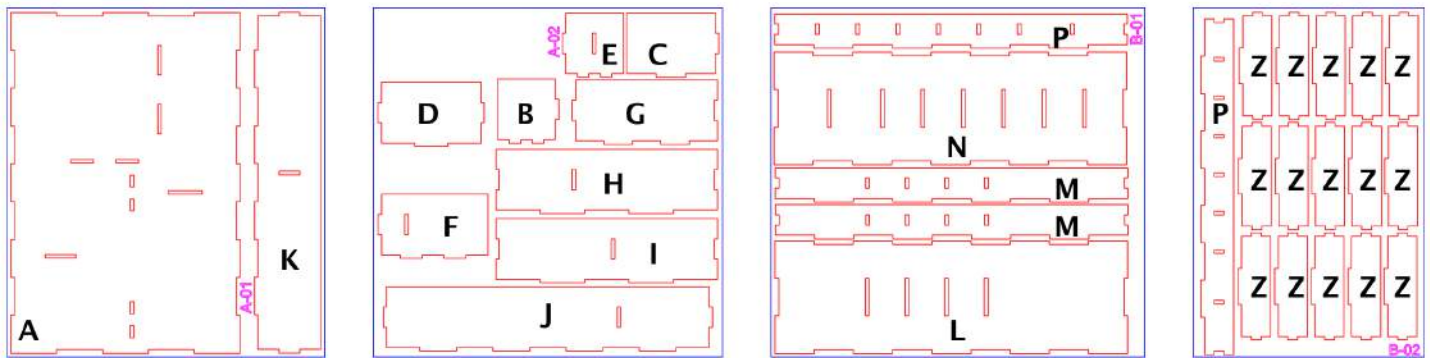
Visit go7gaming.com for a large selection of storage solutions.

Follow us on Twitter: [@go7gaming](#) and
Facebook: [go7gaming](#)

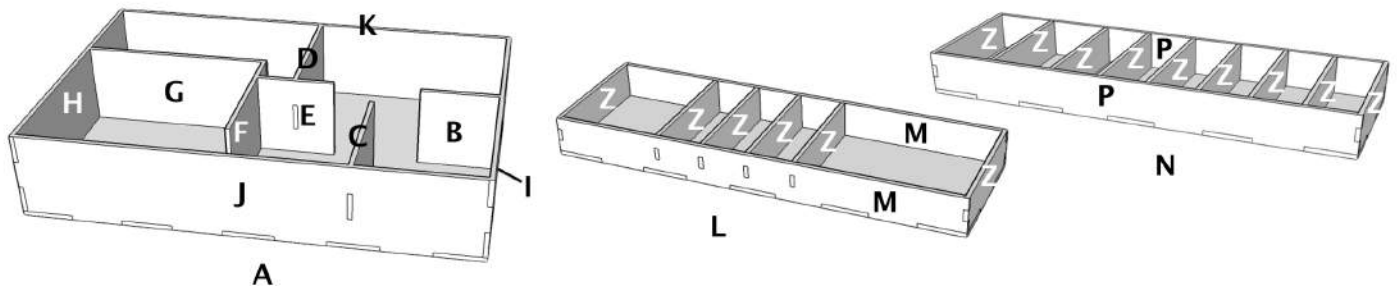
**GO
GAMING**

Made in the USA

Kit Plates



3D Models



Build Instructions

At this stage you will be gluing several components onto the base (A). We always construct from the inside out, so the four outer walls will be glued and placed last. So, you only want to place glue on the parts that will join with the base (A). During each step, you should apply pressure as you seat each piece so that a good connection is made between the two parts. This will generally squeeze a small amount of glue out from between the parts. You should always cleanup excess glue after seating parts.

You don't need to place glue on both pieces you are joining. Simply placing glue on one of the pieces is enough.

- 1) Lay the base (A) down on a protected surface and then glue and place piece (B) into the matching slots of (A).
- 2) Next, glue and place piece (C) to the base (A).

This next stage requires that you glue two pieces to each other, add a piece, and then add one final piece. Finally, the entire four piece assembly will be glued to the base (A).

- 3) Take pieces (D) and (E) and glue them together. Again, only apply glue to the parts needed to join these two pieces together.
- 4) Next, using glue, attach piece (F) to the (E) of the paired part (D+E).
- 5) Finally, using glue, join piece (G) to (F) of the combined part (D+E+F).
- 6) Now that you have built the four part inner structure, very carefully apply glue to the tabs that will seat into the base (A) and carefully seat the combined part into the base (A).

You can now proceed to adding the outer walls of the main insert.

- 7) At each point where a wall (H/J/K/I) will come into contact with another piece, ensure some glue is placed on one of the pieces and seat each wall (H/J/K/I) until all four are in place.
- 8) Carefully examine the entire unit and make sure all connections are joined properly. With a tacky, fast-setting glue a quick check and then setting the completed unit aside should suffice.

Next, construct the two trays. The dividers (Z) act as ends and dividers for the trays. They are all the same size and can be used interchangeably.

- 9) Place the base for tray (L) on a protected surface and then glue and place the inner dividers (Z).
- 10) Next, glue and place the long walls (M). These walls (M) are interchangeable.
- 11) Finally, glue and place an end piece (Z) on each end of the tray.
- 12) Carefully examine the entire tray (L) and make sure all connections are joined properly.

- 9) Place the base for tray (N) on a protected surface and then glue and place the inner dividers (Z).
- 10) Next, glue and place the long walls (P). These walls (P) are interchangeable.
- 11) Finally, glue and place an end piece (Z) on each end of the tray.
- 12) Carefully examine the entire tray (N) and make sure all connections are joined properly.

All done. Congratulations! Allow your insert and trays to dry overnight and then place in your box and arrange your components.