

CAVERNA INSERT

Model CAV-001 Insert Kit for Caverna Officially Licensed By Lookout GmbH



General Construction Tips

- 1) Each piece should be removed from the frames with gentle pressure back and forth. You should not need a knife to cut pieces free.
- 2) Our inserts are designed to be glued together. We use Sobo craft glue, but any glue that is tacky and dries clear will work fine. Tacky glue assists with building as it holds better during construction.
- 3) Keep some paper towels handy for cleanup during build.
- 4) Ensure you cleanup excess glue as you build. This is especially important in card lanes where dividers will be used.
- 5) Check the build diagram included in the package for reference, including all parts, as well as build tips specific to this insert.
- 6) Always dry fit pieces first to ensure a good fit and to better understand how the kit goes together.
- 7) Remember to allow your insert to dry overnight.
- 8) You can optionally sand and even stain your insert.
- 9) Don't hesitate to reach out to us if you have questions!

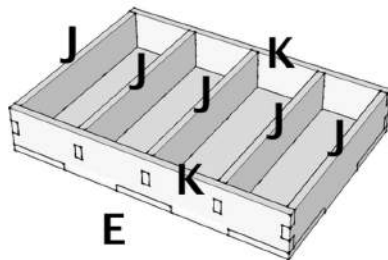
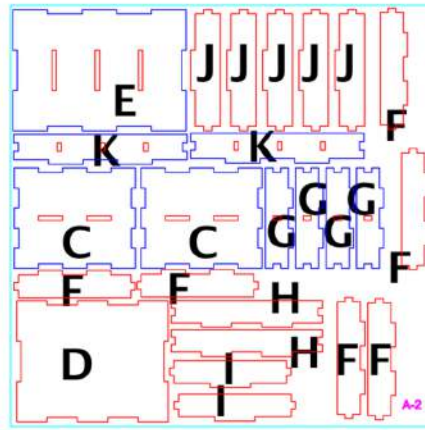
NOT A CHILDREN'S TOY
AGE 14+

Visit go7gaming.com for a large selection of storage solutions.

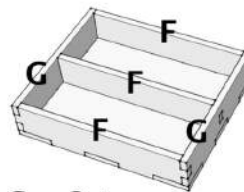
Follow us on Twitter: [@go7gaming](https://twitter.com/go7gaming) and Facebook: [go7gaming](https://facebook.com/go7gaming)

GO
GAM7ING
Made in the USA

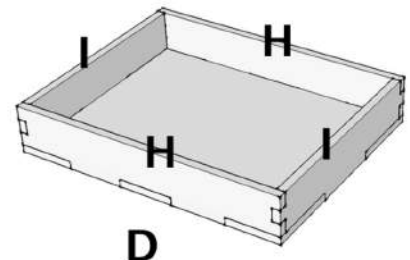
Kit Plate



3D Models



C - 2 trays



Build Instructions 1/2

First, let's build the token trays. We will start with the token tray that has no dividers in it (tray **D** above). Gather all the parts listed above and dry fit them so you understand how the tray goes together. Also note where to place glue (on the bottom of the wall and on the notches). After each piece is placed, you should cleanup excess glue using the provided glue sticks (short, thin wood strips).

- 1) Lay the tray base (**D**) on your workspace and then apply glue to the bottom of short wall (**I**).
- 2) Next, apply glue to the bottom of long wall (**H**), as well as to the end of the long wall where it connects to short wall (**I**) and place it.
- 3) Next, apply glue to the bottom of short wall (**I**) and to the end that will connect with long wall (**H**) and connect them.
- 4) Finally, put glue on the bottom and ends of long wall (**H**) and connect it to the short walls (**I**).

Next, let's build the token tray with three internal dividers (tray **E** above).

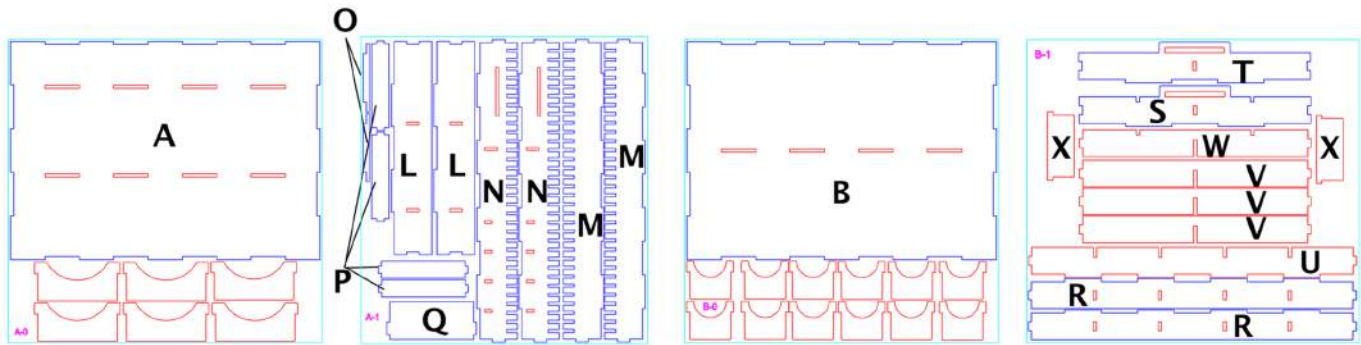
- 1) Lay the tray base (**E**) on your workspace and then apply glue to the bottom of each of the three short internal dividers (**J**) and place them.
- 2) Next, apply glue to the end notches of the internal dividers (**J**) on one side and then place glue on the bottom of long wall (**K**) and place the wall. Do the same on the other side.
- 3) Finally, apply glue to the bottom and ends of short wall (**J**) and connect it to long wall (**K**) on one side, then do the same on the other side.

Finally, let's build the two token trays with one internal divider (tray **C** above/2 trays total).

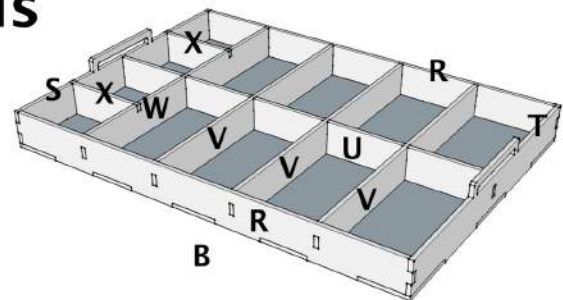
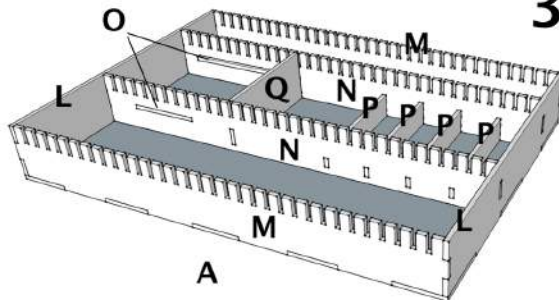
- 1) Lay the tray base (**C**) on your workspace and then apply glue to the bottom of the long internal divider (**F**) and place it.
- 2) Next, apply glue to the end notches of the internal divider (**F**) on one side and then place glue on the bottom of short wall (**G**) and place the wall. Do the same on the other side.
- 3) Finally, apply glue to the bottom and ends of long wall (**F**) and connect it to short wall (**G**) on one side, then do the same on the other side.
- 4) Repeat steps 1 - 3 and build the second (**C**) tray.

Turn the page over to proceed to the construction of the bottom and top insert trays.

Kit Plates



3D Models



Build Instructions 2/2

Next, let's construct the bottom insert tray (A). Remember to dry fit the pieces so you clearly understand how they glue together and where to apply glue. You should do this at each step to ensure you glue the pieces together properly.

- 1) Lay the two inner rails (N) on your workspace and gather the structural dividers (Q), (P) x 4, and the tray supports (O) x 2.
- 2) First, apply glue to the tray support (O) and connect it to an inner rail (N). Now do the same for the other inner rail. Pay careful attention to the facing of these inner rails (N). The tray supports (O) should face each other, so that they can support token tray (D).
- 3) Next, lay one of the inner rails flat, with the tray support (O) facing up and apply glue to end of structural divider (Q) and connect.
- 4) Now do the same for the four smaller structural dividers (P). At this point, the five structural dividers (Q, P) will be standing up straight.
- 5) Apply glue to the ends of each of the structural dividers glued to inner wall (N) and connect the other inner rail (N) to the structural dividers (Q, P).
- 6) Lay the bottom insert tray base (A) on your workspace, apply glue to the notches on the bottom of the joined inner wall structure (N), and carefully insert your newly built inner wall structure into the bottom tray insert base (A).
- 7) Next, apply glue to the end notches on one side of the inner rail structure, place glue on the bottom of the short wall (L), and connect the wall to the bottom insert tray base (A) and inner rails (N). Do the same on the other side.
- 8) Finally, place glue on the bottom and side notches of the long outer rail (M) and connect it to the bottom insert tray (A) and the short walls (L). Do the same for the other side.

Finally, let's construct the top resource tray (B).

- 1) Lay the top resource tray base (B) on your workspace and apply glue to the bottom of the inner divider (U) and connect them.
- 2) Next, place the inner cross dividers (V) and then the notched inner cross divider (W). Note the small notches on (W). There is an associated notched short wall (S) for that side of the resource tray. These inner cross dividers don't need glue at this point.
- 3) Next, place glue on the notch of inner divider (U) and the bottom of short wall (S) and connect. Ensure you place short wall (S) on the side closest to cross divider (W).
- 4) Next, place glue on the notch of inner divider (U) and the bottom of short wall (T) and connect.
- 5) Next, place glue on the end notches of all inner cross dividers on one side, the bottom of long wall (R), and connect the wall to the structure. Do the same on the other side.
- 6) Finally, apply glue to the small notches and bottom on the small, inner dividers (X) and then seat them into the small cutouts on the inner cross divider (W).

Now allow your completed insert to dry overnight, punch out your dividers, and then get to gaming!